



# 12V inverter uses 16 8V voltage





## Overview

---

8V input with a 12V inverter is possible but requires careful evaluation of voltage tolerances, safety mechanisms, and application-specific risks. This article explores technical limits, real-world scenarios, and best practices for hybrid voltage systems in renewable energy. What 12v inverter goes up to 16. 9 Volts input?

Thanks! | DIY Solar Power Forum Have you tried out dark mode?

! Scroll to the bottom of any page to find a sun or moon icon to turn dark mode on or off! What 12v inverter goes up to 16. 8. I am making a high capacity battery bank that uses a 4s Li-ion cells from a car manufacturer. With Li-ion there is no 12v direct drop in replacement as it ranges from 16. Actual voltages will vary depending on battery chemistry, charging parameters, etc. Many "12V" batteries are. Inverter input Volts (V): Are you using a 12v, 24v, or 48v solar system?

□□□□□□□□□□□□□□□□□ □□□□□□□□! If you're not running your inverter at its full capacity, For Example, let's say you have a 1000W inverter but your daily total load at a time doesn't exceed 600 AC watts so instead of entering. Using a 16V battery with a 12V inverter isn't as simple as plug-and-play. Let's break down the science behind it: Nominal Voltage: Most inverters are designed for specific battery voltages.



## 12V inverter uses 16 8V voltage

---



### Can a 12 Volt Inverter Use a 16V Battery? Compatibility & Safety Guide

Summary: Wondering if your 12V inverter can handle a 16V battery? This guide explains compatibility factors, safety precautions, and real-world applications. Learn how voltage differences impact ...

### [12 volt to 16 volt DC/DC Converters \(Regulators\)](#)

These are Boost Converters that have fixed output of 16VDC. You can specify any output voltage from 13.8 to 16 volts with a minimum order of 20 pieces. They closely regulate the output ...



### Drop voltage from 4s Li-ion (16.8v) to 15v and lower for 12 DC-AC ...

When my battery is not full, everything is happy. As soon as I fill the batteries, the inverter doesn't work until it drops below the threshold. The question is what is the best thing to use ...

### [What 12v inverter goes up to 16.8 16.9 Volts input? Thanks!](#)

I have Victron Phoenix 12V 1200VA (1000W) 120VAC output that has operating range between 9.2 ~ 17.3V, I never verify it though.



### Will this combo work? Inverter's input is 12v, battery's

output is 12.8v. Inverter's input is 12v, battery's output is 12.8v. When you work with batteries, inverters, etc, when someone or products refer to 12v, they mean it in a generic sense as a "12V system". Actual voltages ...

### **Can a 12V Inverter with 16.8V Input Be Used? Safety & Compatibility**

Summary: Using a 16.8V input with a 12V inverter is possible but requires careful evaluation of voltage tolerances, safety mechanisms, and application-specific risks.



### **Inverter Battery Voltage Chart**

A clear understanding of the inverter battery voltage chart is essential for effective battery management and performance. This section covers how to interpret the chart, the different battery ...

### **Can I use a battery with 16,8V**



Only seen a silly person attach a 12v system to a 24v battery and get away with the mistake without an issue. The Phoenix 1600VA inverter will only give you 1300W.



## Calculate Battery Size For Any Size Inverter (Using Our Calculator)

The input voltage of the inverter should match the battery voltage. (For example 12v battery for 12v inverter, 24v battery for 24v inverter and 48v battery for 48v inverter)

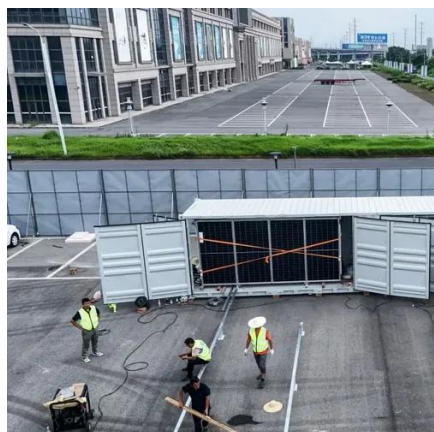
## Calculate Battery Size For Any Size Inverter (Using Our Calculator)

Inverter Battery Size Calculator  
How to Calculate Battery Capacity For Inverter  
How Many Batteries For 3000-Watt Inverter  
Battery Size Chart For Inverter  
Battery to Inverter Wire Size Chart  
To calculate the battery capacity for your inverter use this formula  
$$\text{Inverter capacity (W)} \times \text{Runtime (hrs)} / \text{solar system voltage} = \text{Battery Size} \times 1.15$$
  
Multiply the result by 2 for lead-acid type battery, for lithium battery type it would stay the same  
Example Let's suppose you have a 3000-watt inverter with an 85% efficiency rate and your daily runtime See more on [dotwatts.winnicakrucza.pl](http://dotwatts.winnicakrucza.pl)



## Can a 12 Volt Inverter Use a 16V Battery? Compatibility & Safety Guide

Summary: Wondering if your 12V inverter can handle a 16V battery? This guide explains compatibility factors, safety precautions, and real-world applications. Learn how voltage differences impact ...



## [Power inverters that work with the 16v output](#)

As per title, I am looking for suggestions of inverters that work in the so called 12V socket, but is actually 16v since the low voltage battery was changed



## Contact Us

---

For catalog requests, pricing, or partnerships, please visit:

<https://www.id2market.eu>

Phone: +34 910 56 87 45

Email: [info@id2market.eu](mailto:info@id2market.eu)

Scan the QR code to access our WhatsApp.

