



1mw pv distribution for research station





Overview

In this paper, the layout of a photovoltaic unit with 1MW is discussed by comprehensively comparing the cable consumption of photovoltaic unit and the power transformer of photovoltaic power station. Ministry of New and Renewable Energy (MNRE) and state nodal groups are also presenting 20%-70% subsidy on solar for residential, institutional, and non-profit groups to promote such. PV modules are arranged in strings, with maximum open-circuit voltage limiting the size of a string. Inverters convert the DC from the PV modules to AC, typically operating as current-source inverters. To overcome the drawbacks of maximum power point tracking due to mismatches and shadows, distributed maximum power point tracking is utilized in this paper. The solar farm can be. ey solution designed for large-scale solar power generation. It houses a ar, a monitoring system and DC connections from solar array. To meet the PV power plant's dema sulated container comes complete with. Solar photovoltaic (PV), which converts sunlight into electricity, is an important source of renewable energy in the 21st century.



1mw pv distribution for research station

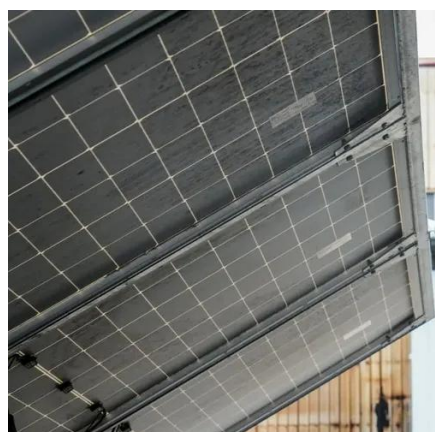


Solar inverters ABB megawatt station PVS800-MWS 1 to 1.25 MW

ABB megawatt station PVS800-MWS 1 to 1.25 MW ey solution designed for large-scale solar power generation. It houses a photovoltaic (PV) power plant to medium voltage (MV) electricity grid. All the ...

[Design of a 1 MW Grid-tied Photovoltaic System](#)

The installation of large-scale grid-tied photovoltaic (PV) systems are rising fast around worldwide. This rise is because the system relies on a widely availab.



International Journal of Scientific Research in Mechanical and

A solar power plant with a 1MW capacity or greater may be taken into consideration as a "Ground Mounted Solar Power Plant, Solar Power Station or Energy Generating Station".

[\(PDF\) The Design of 1 MW Solar Power Plant](#)

This study centers on the creation of a cutting-edge coin-operated mobile gadget charging station, harnessing the inexhaustible power of solar energy via an integrated storage battery.



[Guidance on large-scale solar photovoltaic \(PV\) system ...](#)

Guidance on designing and operating large-scale solar PV systems. Covers location, design, yield prediction, financing, construction, and maintenance.



[Schneider Electric 1MW PV Station Design](#)

Schneider Electric 1MW PV Station Design
Presented by: Bill Brown, PE, Schneider Electric Engineering Services



[1MW Grid-Connected PV System Design . PDF , Power Inverter](#)

This document provides details on the design of a 1MW photovoltaic system connected to the grid. It discusses the key system components, including photovoltaic modules, convergence boxes, a DC ...



Analysis of 1 MW Solar Power Plant



and Implementation of Single ...

A 1 MW power plant was surveyed, having 2 no's of 2 x 0.270/11 kV distribution transformer of 1500 kVA rating which steps up the output from the solar generation to the 11 kv switchgear.



Design of a Level-3 electric vehicle charging station using a 1-MW

In this research, the 1-MW solar system connected to the EV charging station and the connected inverter to the grid are studied and the system was modelled by using MATLAB ®, ...

Optimal Design of Layout and Capacity for MW PV Unit

In this paper, the layout of a photovoltaic unit with 1MW is discussed by comprehensively comparing the cable consumption of photovoltaic unit and the power transformer of photovoltaic power station.



Design of a Level-3 electric vehicle charging station using a 1-MW

ABB megawatt station PVS800-MWS 1 to 1.25 MW ey solution designed for large-scale solar power generation. It houses a photovoltaic (PV) power plant to medium voltage (MV) electricity grid. All the ...



Contact Us

For catalog requests, pricing, or partnerships, please visit:

<https://www.id2market.eu>

Phone: +34 910 56 87 45

Email: info@id2market.eu

Scan the QR code to access our WhatsApp.

