



# 660 Photovoltaic panel power





## 660 Photovoltaic panel power



### [660W/670W/680W All Black Monofacial PERC PV Module For ...](#)

Outstanding Power Output With an efficiency of up to 22.06 % and an output of 655W to 685W, this SP685M-66H all-black solar module ensures maximum energy generation, making it ideal for ...

### [660W Half-cell PERC Monocrystalline Solar Panel](#)

Products 660W Half-cell PERC Monocrystalline Solar Panel ...



### [How many watts is a 660 solar panel?](#)

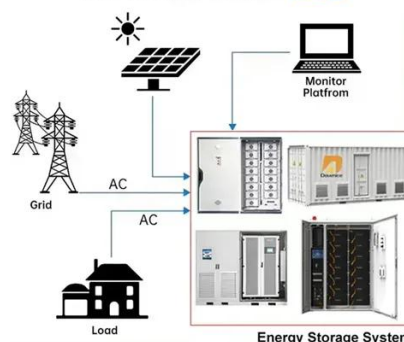
A 660 solar panel typically generates around 380 to 420 watts under standard test conditions, with actual output varying based on factors such as efficiency, sunlight exposure, and ...

### [Risen Mono PERC 660Wp Titan Solar Panel - DISTRIISMA](#)

Risen monocrystalline solar panel 660 Wp - TITAN132-8-650M (132 split cells) 660Wp Risen monocrystalline photovoltaic module with PERC (Passive Emitter Rear Cell) technology with 21,2% ...



## DISTRIBUTED PV GENERATION + ESS



### Longi Solar Panel

Longi Solar Panel - 660-watt Solar Photovoltaic Panel, Single-crystal High-efficiency Power Generation Panel

### 660W photovoltaic panel output voltage

The Canadian 660W Solar Panel is a high-quality solar panel that offers a number of benefits, including high power output, high efficiency, durability, and a long warranty. The panel is a ...



### 660W Half-cell PERC Monocrystalline Solar Panel

Products 660W Half-cell PERC Monocrystalline Solar Panel Product Introduction: 660W solar panels are packaged with MBB M12/G12/210mm PERC solar cells, which have high power and ...



### Daily Energy Output of 660W Solar



## Panels: Key Factors & Real ...

Understanding the Power Generation of 660W Photovoltaic Panels How much electricity does a 660W photovoltaic panel generate daily? While the nameplate capacity suggests 660 watts under ideal ...



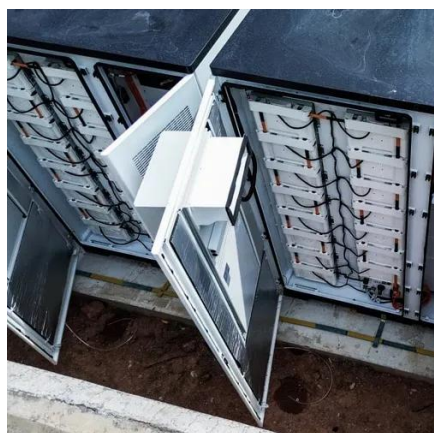
## Photovoltaic panel Canadian Solar CS7N-660MS , 660W , HiKu7 ...

The Canadian Solar CS7N-660MS is a powerful monocrystalline solar panel, part of the HiKu7 industrial series, optimized for large-scale high-efficiency solar projects. With a rated power of ...



## 660W HPBC Solar Panel , High-Efficiency Back Contact PV Module

The 660W HPBC solar panel combines high power output with advanced back-contact cell technology to maximize energy generation per module. With reduced front-side shading, improved ...



## 640-660W

Half-cell with MBB design decreases internal resistance while boosts power output; narrowed inter-cell gap through flexible welding technology contributes to the module's compact ...



## Contact Us

---

For catalog requests, pricing, or partnerships, please visit:

<https://www.id2market.eu>

Phone: +34 910 56 87 45

Email: [info@id2market.eu](mailto:info@id2market.eu)

Scan the QR code to access our WhatsApp.

