

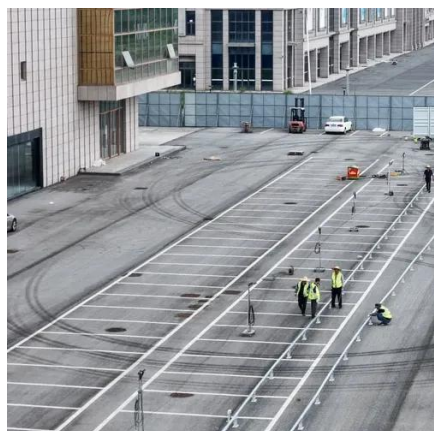


# 690V Server Rack Project for Power Plants





## 690V Server Rack Project for Power Plants



### 5 kW GaN-Based AC/DC Reference Design for AI Server and Data ...

The EPC 5 kW reference design supports a modular power architecture scalable to 33 kW, 48 kW, and as high as 108 kW rack systems for less cost, delivering industry-leading efficiency ...

### [Utility-Scale Power Conversion Solutions , EPC Power](#)

The CAB1000 is a scalable power inverter that provides reliable energy conversion for applications of any size. Designed for both UL and IEC markets, it's the easy-to-use building block that gets your ...



### [M: One Inverter for All Uses , EPC Power](#)

The modular M System offers a scalable building block for systems of all sizes, combining world-class power density with an easy-to-install design. Built in the USA with cutting-edge silicon carbide ...

### [Technical Information and Documentation , EPC Power](#)

Download product specifications, learn about our warranty details, and gain a deeper understanding of our commitment to quality and sustainability. The modular M System offers a scalable building block ...



### [EPC Projects in the Power Generation & Clean Energy ...](#)

With our customized solutions for complex EPC projects in the power generation and clean-energy industry.



### [GaN-based DC/DC Conversion for Data Center ...](#)

Design GaN-based DC/DC converters for your data center applications to improve power usage efficiency & see why EPC GaN products are the best in the market.



### **EPC Projects of Power Plants**

Our scope of supply can range from individual gensets to complete, ready-to-run power plants based on full EPC (Engineering, Procurement, Construction). You can see an illustration of our EPC scope of ...



### [Power Plant EPC , Power Plant](#)



## Engineering

Power station study and upgrade completed at Golden Pride using Si-Tec controls to parallel a bank of 7 Detroit Engines to a bank of 7 Cummins engines.



## **Rack & Power**

Conversion, Storage, and Control Systems of power between the data center infrastructure and the IT gear. Shelves, supports, sub-chassis, and adapters needed to implement IT gear



## Contact Us

---

For catalog requests, pricing, or partnerships, please visit:

<https://www.id2market.eu>

Phone: +34 910 56 87 45

Email: [info@id2market.eu](mailto:info@id2market.eu)

Scan the QR code to access our WhatsApp.

