



Abnormal communication between Xiaomi host and base station





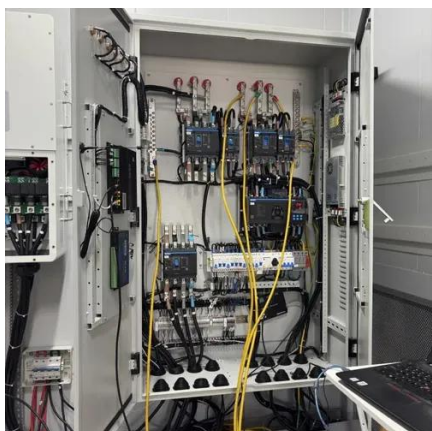
Overview

Q: Why do the videos recorded on the microSD card have incoherence and incoordination between sound and picture in the Xiaomi Outdoor Camera Base Station?

1. Restart the device to see if it can return to normal; 2. I even reset the deebot and did the app scanning part again but still getting this error as soon as the. Whether the host is in an area with strong Wi-Fi signal 3. 4G band Wi-Fi, and doesn't support 5G band Wi-Fi; 4. If i on the hassio debug logs, the result is: etc. etc. 2019-12-01 08:46:11 INFO (MainThread) [homeassistant. binary_sensor] Setting up binary_sensor. I. Additionally it seems like that the (preview) image of the last record doesn't work anymore while it is still visible in the app.



Abnormal communication between Xiaomi host and base station



Xiaomi Outdoor Camera Base Station , PDF , Wi Fi , Computing

The Xiaomi Outdoor Camera Base Station (Model: MJSXJ07BY) offers smart online protection with features like local storage, strong signal, and immediate alerts. The manual includes installation ...

ROIDMI EVA/EVE USER GROUP , Base station communication is ...

Base station communication is abnormal any help?

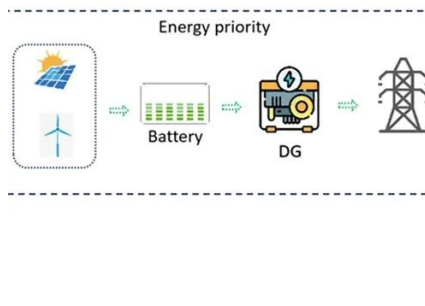


[Roidmi EVA Review after a month of usage : r/RobotVacuums](#)

Few days ago, I'm not sure why the base station had problems connecting with the network and didn't manage to wash the rotating mops before the robovacuum cleaner left the base station. And it took ...

Outdoor base station not connecting

Disconnecting my iPhone from VPN seemed to finally do the trick. VPN messes with a lot of home devices-I had the same issue (and fix!) with another vendor's doorbell/camera. After getting ...



51.2V 150AH, 7.68KWH

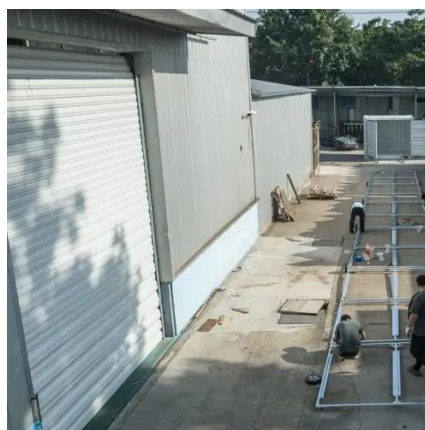
[Fake Base Station Detection and Link Routing Defense](#)

We designed and built a defense scheme which detects and blacklists a fake base station and then, informed by the detection, avoids it through link routing for connectivity availability.



[Xiaomi Outdoor Camera Base Station FAQ](#)

Q: Why do the videos recorded on the microSD card have incoherence and incoordination between sound and picture in the Xiaomi Outdoor Camera Base Station? A: To check the problem, please ...



[Eufy Security Add-on Disconnected from station](#)

So the rest of the communication between base station and HA still seems to work somehow. I am having the same issue with "Disconnected from station" errors, and no preview ...

[Xiaomi gateway sensors not communicate](#)



with HA

Do you have the Gateway assigned a fixed IP address from your router? Are you sure it has been assigned 192.168.1.191 after the power outage? Also, you don't need to hide internal IP ...



Keep getting communication malfunction between deebot and station

Found the problem. I run two different wifi in my home and it seems that the the deebot and the station are connected to different ones. Reset the deebot and made sure they connect to the same one ...

Common problems

Check whether the charging seat and the charging pad of the host are dirty. If so, please clean them up; 2. Make sure that the host and the charging base are in normal contact, and hear the voice of "start ...





Contact Us

For catalog requests, pricing, or partnerships, please visit:

<https://www.id2market.eu>

Phone: +34 910 56 87 45

Email: info@id2market.eu

Scan the QR code to access our WhatsApp.

