



# Area and capacity of each photovoltaic panel





## Overview

---

Standard solar panels typically have an area of around 1. The real constraints are typically usable roof space after accounting for required 3-foot setbacks and obstruction clearances. There is no standardized chart that will tell you, for example, “A typical 300-watt solar panel is this long and this wide. Example: 5kW solar system is comprised of. How much area does each solar photovoltaic panel have?

To determine the area covered by each solar photovoltaic panel, several factors come into play, including the type of panel, the manufacturer, and its specific capacity. Formula:  $\text{Panels} = (\text{Roof Area} \times \text{Usable \%} \times (1 - \text{Spacing Loss \%})) \div \text{Panel Area}$  →  $\text{Total Capacity (kW)} = \text{Panels} \times \text{Panel Wattage} \div 1000$ . You can select various mounting system variants and available area. The calculator estimates the PV area, based on general PV efficiency.



## Area and capacity of each photovoltaic panel



### [Total Area Required for Solar Panel Installation Calculator](#)

Extensive Tables of Common Values for Solar Panel Installation Area Calculations. To start, it's essential to know typical panel sizes, wattages, and efficiencies used in residential, ...

### [We Analyzed 100 Solar Panels: Dimensions, ...](#)

Dimensions and Area: The dimensions of each solar panel model are ...



### [We Analyzed 100 Solar Panels: Dimensions, Efficiency, & Load](#)

Dimensions and Area: The dimensions of each solar panel model are listed in millimeters, along with the calculated area in square meters. Looking at the "Dimensions (mm)," "Area (m<sup>2</sup>)," and "Power Range ...

### [standard solar photovoltaic panel sizes explained](#)

Discover standard solar photovoltaic panel sizes. Choose the perfect fit for your installation with our expert guide. Learn more today!



## [Rooftop Solar Panel Size and Layout Guide](#)

Once the usable area is confirmed, the number of panels can be estimated based on user demand or target system capacity: Required panel count = Required capacity (kWp) ÷ Rated ...

## [How much area does each solar photovoltaic panel have?](#)

To determine the area covered by each solar photovoltaic panel, several factors come into play, including the type of panel, the manufacturer, and its specific capacity.



## [Roof Area to Solar Panel Capacity Calculator \(kW Estimator\)](#)

Use our Roof Area to Solar Panel Capacity Calculator to estimate how many solar panels fit on your roof and total system capacity in kW. Adjust for usable roof area, panel size, wattage, and spacing losses.

## [PV Capacity and Yield Calculator \(Free\)](#)



Estimate the PV capacity that you can install on your roof or plot. You can select various mounting system variants and available area. The calculator estimates the PV area, based on general PV ...

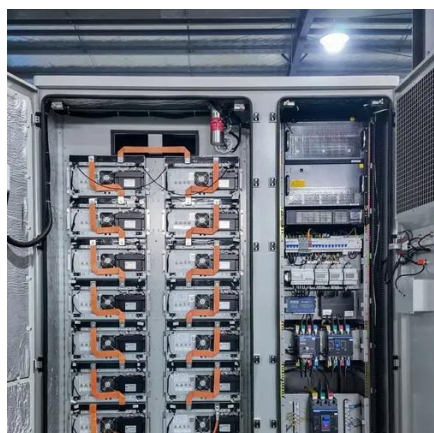


## Standard Solar Panel Sizes And Wattages (100W-500W Dimensions)

The goal here is to get to the average solar panel size by wattage. You can find typical dimensions of 100W, 150W, 170W, 200W, 200W, 220W, 300W, 350W, 400W, and 500W solar panels summarized ...

### [Solar Panel Size & Dimensions Guide 2025](#) [. Complete Specs](#)

Complete guide to solar panel sizes and dimensions. Compare 60-cell vs 72-cell panels, weights, roof space requirements, and installation specs for 2025.



### [How much area is needed for solar panel installation](#)

To help you decide if your property is suitable for solar, this guide outlines roof space requirements and breaks down how to calculate the area needed for your home solar panel installation.



## Contact Us

---

For catalog requests, pricing, or partnerships, please visit:

<https://www.id2market.eu>

Phone: +34 910 56 87 45

Email: [info@id2market.eu](mailto:info@id2market.eu)

Scan the QR code to access our WhatsApp.

