



# Battery testing france





## Battery testing france



### **SERMA continues its investment in battery testing with a new 5,000 ...**

This new facility dedicated to abuse testing for battery is a key step in supporting the energy transition and the industrial ambitions of our clients in France and across Europe.

### [SERMA Inaugurates Battery Testing Center Near Paris](#)

French company SERMA Technologies has opened one of Europe's most advanced battery testing centers on a 5,000-square-meter site south of Paris. At the facility, the SERMA Group ...



### [France Battery Testing and Certification Services Market](#)

What role will technological innovations, such as AI-driven diagnostics and IoT-enabled testing equipment, play in shaping the future of battery testing and certification services in France



### **SERMA Energy collaborates with Keysight to expand battery test**

Keysight Technologies, Inc. (NYSE: KEYS) and SERMA Energy have collaborated to offer customers improved battery testing in France. Through the partnership, SERMA Energy will use Keysight's ...



### FEV's eDLP

Since 2008, FEV has been successfully conducting electric and thermal endurance tests on battery cells, modules, and packs for clients around the world at its Trappes Test Center in France.



### SERMA inaugurates one of Europe's most advanced abuse testing ...

With this new site, SERMA is once again strengthening its position as the European leader in battery testing and confirming its commitment to providing long-term support to the French ...



### [EV, BEV and PHEV Testing , SGS France](#)

With ISO/IEC 17025 laboratory accreditation, lithium battery expertise and over 30 years' experience of the requirements and test methods of vehicle manufacturers, we can meet all your battery testing ...

### [Batteries, Cells & Accumulators , Eurofins](#)



## E&E

We offer a single-source solution for battery testing and certification for all battery chemistry types as stand-alone products, and special requirements for implemented batteries.

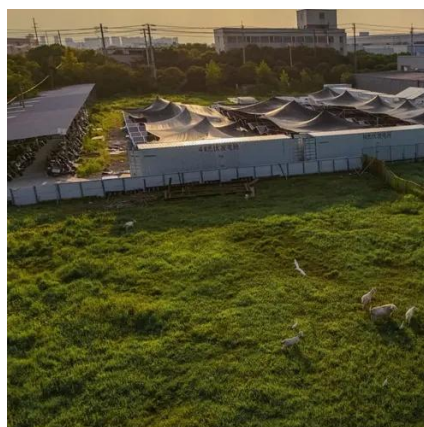


## SERMA Opens Advanced 5,000 m<sup>2</sup> Battery Abuse Testing Center

In October 2025, SERMA Technologies, a subsidiary of SERMA Group, opened a new 5,000 m<sup>2</sup> facility dedicated to battery abuse testing and safety near Orléans, France.

## **Battery laboratory**

2 abusive test areas from the cells to the complete pack (300kWh) - overcharge, short circuits, thermal constraints, drop tests Experiments in real electrical systems on our Concept Grid (more informations ...)





## Contact Us

---

For catalog requests, pricing, or partnerships, please visit:

<https://www.id2market.eu>

Phone: +34 910 56 87 45

Email: [info@id2market.eu](mailto:info@id2market.eu)

Scan the QR code to access our WhatsApp.

