



# Box-type substation energy storage





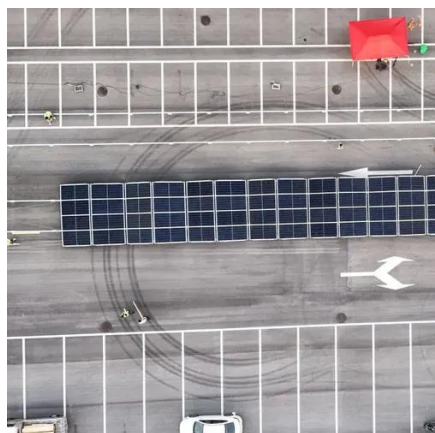
## Overview

---

Box-type substations are widely used in various energy storage scenarios because the box-type substations have advantages such as a small footprint, high mobility, high security and reliability, and easy maintenance. They bring together transformers, circuit breakers, plus various control panels all within one compact enclosure. These different parts actually do pretty well together when it comes to managing electricity. Box type substations are revolutionizing the way electrical power is distributed, offering a compact, efficient, and highly reliable solution for modern power systems. These self-contained structures offer numerous advantages, including space efficiency, reduced.



## Box-type substation energy storage



### [Brief Introduction to Basic Technology of Box Substation](#)

As we delve deeper into the basic technology behind box substations, we'll explore their key components, operational principles, and the significant role they play in ensuring efficient and ...

### [Box-type Substation: A Smarter, More Flexible Power Solution](#)

The evolution from bulky traditional substations to compact, smart box-type substations marks a significant step in modern power distribution. Not only are these units efficient and easy to ...



### **What Is a Box Type Substation and How Does It Work in Modern ...**

This article provides a comprehensive guide to box type substations, covering their structure, working principles, applications, advantages, technical standards, and selection criteria.



### **The Future of Box Type Substations: Charting a Course for Compact ...**

As the global push for sustainable energy gathers momentum, Box Type Substations will play a crucial role in connecting renewable energy sources--such as solar power, wind power, and battery energy ...



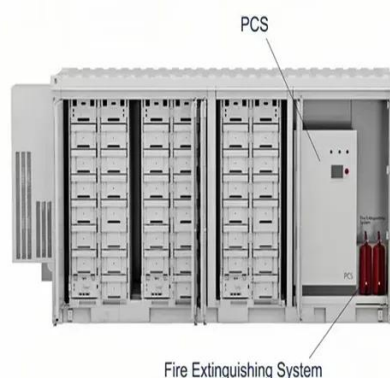
## What Makes Box Type Substations a Critical Asset for Modern Power

As urbanization accelerates, renewable energy adoption grows, and industries demand more flexible power solutions, understanding why box type substations have become indispensable ...



## The uses and classifications of box

These substations are designed to enhance the reliability and safety of electrical distribution while minimizing the space they occupy. This article will explore the various uses of box-type substations, ...



## [The Ultimate Guide to Box Type Substation](#)

These substations are designed to meet the growing demands of urbanization, industrial advancements, and decentralized energy production. Combining sleek design with advanced ...



## [11-35kV Energy Storage Prefab](#)



## Substation Transformer

Unlike generic energy storage containers, our energy storage box transformer is designed from the ground up to integrate grid-grade insulation, advanced thermal management, and utility-compliant ...

- ✓ LIQUID/AIR COOLING
- ✓ INTELLIGENT INTEGRATION
- ✓ PROTECTION IP54/IP55
- ✓ BATTERY /6000 CYCLES



## **Box-type substation, energy storage power supply system, and**

Box-type substations are widely used in various energy storage scenarios because the box-type substations have advantages such as a small footprint, high mobility, high security and

## **Box-Type Substations: The Ultimate Compact Power Solution You Need**

Explore the integral role of box-type substations in modern power distribution. Discover their components, advantages like space reduction in urban areas, and integration with solar and ...





## Contact Us

---

For catalog requests, pricing, or partnerships, please visit:

<https://www.id2market.eu>

Phone: +34 910 56 87 45

Email: [info@id2market.eu](mailto:info@id2market.eu)

Scan the QR code to access our WhatsApp.

