



Can a 12v inverter be powered by a 14v lithium battery





Can a 12v inverter be powered by a 14v lithium battery

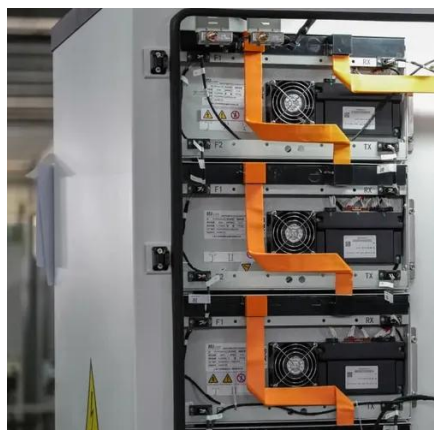


[Lithium Battery for Inverter: Pros, Specs, and Tips](#)

A lithium battery for inverter is a rechargeable battery that uses lithium-ion technology to store energy. It works with inverters by delivering direct current (DC), which the inverter transforms ...

Compatibility of Lithium-Ion Batteries with Existing Inverters

Lithium-ion batteries are a type of rechargeable battery that has gained widespread use because their high energy density and efficiency. Unlike traditional lead-acid batteries, they offer a lightweight ...



[Can a 14v lithium battery be used with a 12v inverter](#)

However, they must be compatible in terms of voltage and power rating. For example, a 48V lithium-ion battery should pair with a compatible 48V inverter. Additionally, not all inverters support lithium-ion ...

[Can a 12v inverter be powered by a 14v lithium battery](#)

Yes, a 14-volt inverter can use a 12V lithium battery. Generally, 12V inverters can handle automotive voltages that may exceed 14 volts, so your inverter should be fine with a 12V



[Understanding Voltage Compatibility: 12V vs 14V Batteries](#)

Understanding voltage compatibility between 12V and 14V batteries is crucial to ensure device safety, optimize performance, and prevent damage. Using the wrong voltage can reduce ...

Can a 14V Lithium Battery Work with a 12V Inverter? Key Insights ...

Summary: Wondering if your 14V lithium battery can power a 12V inverter? This guide explores compatibility risks, practical solutions, and industry-tested methods to optimize energy storage systems.



[Can Lithium Batteries Work With Any Type of Inverter?](#)

The Bottom Line While lithium batteries can't work with every inverter, most modern solar and off-grid inverters now offer lithium compatibility. For optimal performance in home energy stems, ...

How to Choose the Right Inverter for



a Lithium Battery System

Choosing the wrong inverter for lithium battery use can lead to inefficiency, system instability, or even battery damage. Unlike lead-acid systems, lithium batteries operate across a different voltage curve, ...

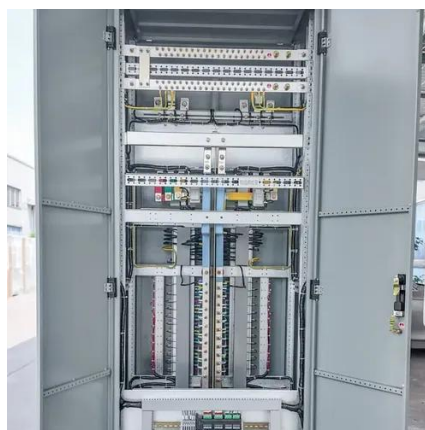


Importance of Compatibility Between Inverter and Lithium Battery

Among these innovations, lithium batteries have emerged as the preferred choice for backup power due to their efficiency, longevity, and compact design. However, one key factor that ...

[How bad, if at all, is 14.4V overvoltage for 12V inverter?](#)

My question is, can the 12V inverter still function as reliably under these higher 14.4V overvoltages? And related to that what should the overvoltage be set to for max inverter reliability? I ...





Contact Us

For catalog requests, pricing, or partnerships, please visit:

<https://www.id2market.eu>

Phone: +34 910 56 87 45

Email: info@id2market.eu

Scan the QR code to access our WhatsApp.

