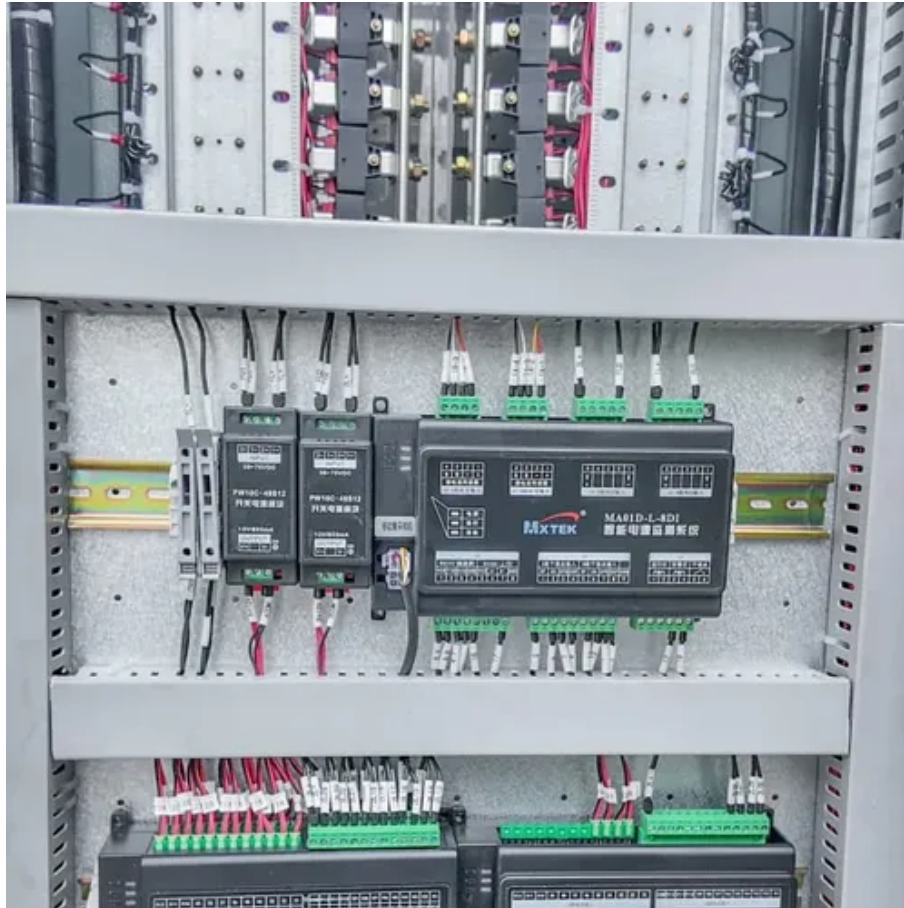




Can a house be built on a power storage station





Overview

Can a Power Station Really Run Your Whole House?

Yes, it can. But only if you choose the right system. To back up the whole home, you need three things: Some homes need only basic power. Think about what you must power: AC?

Fridge?

Oven?

Internet?

. Living near power stations and high-voltage transmission lines is a topic of concern for architects, urban planners, and potential homeowners. While it may be technically feasible in certain circumstances, such construction is generally discouraged due to the myriad risks and restrictions. The required distance for building near power lines varies based on technical and legal factors.



Can a house be built on a power storage station



Energy Storage Power Station Construction Guide: Key Steps and ...

Maybe you're just someone who Googled "how to build a giant battery that doesn't look like your phone's power bank." Whatever brings you here--welcome! This energy storage power ...

Integrate a Power Station into Your Home: Full Backup & Smart Control

Discover how to connect a power station to your home's circuitry for whole-house backup. Learn about setup, safety, scalability, and long-term energy savings.



Living Near Power Stations and High-Voltage Lines: Architectural

In this article, we will analyze the impact of living near high-voltage power lines, discuss scientific research, regulatory restrictions, and explore architectural and urban planning strategies to ...

[Developing near overhead lines or substations , EMFs](#)

Are you considering building or developing near a substation or overhead line? You may be a homeowner considering an extension, or you may be considering developing a brownfield or ...

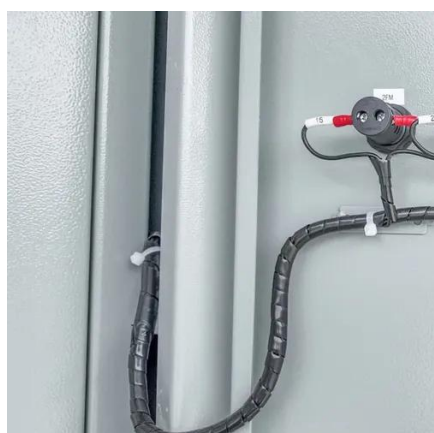


How Close Can You Build to Power Lines? The Definitive Guide

Imagine this: you've found the perfect plot of land, the architectural plans are drawn up, and construction is ready to begin. But a silent, powerful neighbor looms nearby--the overhead ...

[DIY: How to Build a Custom 2400-Watt Power Station Setup](#)

Building a DIY 2400 or 1200 watt power station is a great way to ensure backup power while learning about energy storage. Whether for home backup, camping, or RV use, a properly built system can ...



[Is It Safe or Legal to Build Under a Power Line?](#)

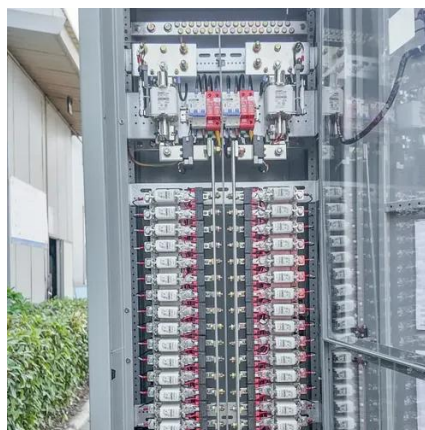
Before considering construction near power lines, it is imperative to consult with local authorities, utility companies, and legal experts to ensure compliance with all applicable laws and to safeguard the well ...

[What Is the Minimum Building Distance](#)



From Power Lines?

The required distance for building near power lines varies based on technical and legal factors. Get a clear overview of how these rules are set and applied.



Can You Build a House Under High Voltage Power Lines?

The answer to whether one can build a house under or near these high-capacity transmission lines is not a simple yes or no, but rather a conditional one governed by utility ...



'Buildings as Power Stations': An Energy Simulation Tool for Housing

Reducing energy demand to 'PassivHaus' levels of performance and the full integration of photovoltaic modules and wind turbines with buildings is itself a challenge to architects and house ...





Contact Us

For catalog requests, pricing, or partnerships, please visit:

<https://www.id2market.eu>

Phone: +34 910 56 87 45

Email: info@id2market.eu

Scan the QR code to access our WhatsApp.

