



Can the door of the locker be higher than the door of the room





Overview

Moreover, locks should be positioned no higher than 48 inches from the floor. Extra shelves can be added if needed. Recessed handles are needed for metal and designer wood lockers. The bottom. These lockers take into consideration the physical limitations of users, making it essential for public spaces like schools, workplaces, fitness centers, and other facilities that aim to provide equitable access. Salsbury's Metal Lockers and Wood Lockers are designed to deliver high security and. Dressing, fitting, and locker rooms shall comply with 803. Some states like Florida have their own accessibility code. The 2010 ADA Standard, states in Section 225. 2 that at least 1 of 200 lockers in a facility must but accessible and that in a facility with more space than 201, 10 plus 2% of lockers must be accessible.



Can the door of the locker be higher than the door of the room



Your Guide to Locker ADA Compliance

They are made to meet the range and height requirements described in the 2010 ADA Standard. Benches can be added that maintain ADA compliance and wheelchair accessibility. The ...

What Makes a Locker ADA Compliant? , Lockers

They can be tailored to adhere to the ADA locker requirements, promising years of dependable and maintenance-free service. The key lies in adjusting the shelf's vertical location ...



Locker Installation Guide (ADA Compliant)

The area around a locker should allow include a 60 inch diameter to allow wheelchair turning. There should be 10 inches allowed for a locker door to swing outward.



ADA LOCKER GUIDELINES

The locker shelf or hooks cannot exceed 48" from the finished floor. The locker bottom must be a minimum of 15" from the finished floor (an additional shelf can be added to create a false bottom) ...



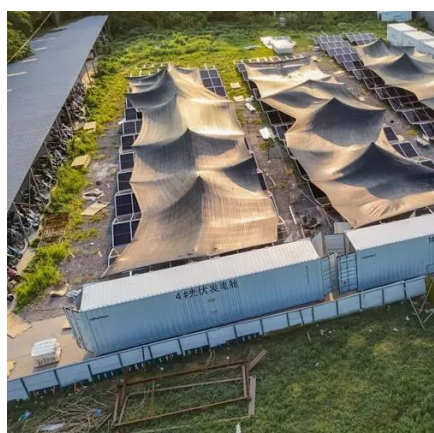
Locker Rooms

Lockers: At least 5% of the lockers, but not less than one, shall be accessible and shall have locking/opening devices that are operable with a closed fist and mounted no higher than 42 inches ...



Designing for Everyone: Navigating ADA Locker Room Layouts with ...

Doorways: All doorways along the accessible route and into accessible changing compartments must have a minimum clear opening width of 32 inches when the door is open 90 ...



ADA-Compliant Locker Room Design

It's critical to note that ADA code requires design consideration to ensure usability of special needs users. Accessible means that the space must abide the regulation in section 811 and ...

[ADA Locker Compliance: A Step-by-Step](#)



Guide

Wanting to understand ADA locker compliance?
Here is your step by step guide through the 2010
ADA Design Standards for Accessible Design



803 Dressing, Fitting, and Locker Rooms

Dressing, fitting, and locker rooms shall comply with 803. Advisory 803.1 General. Partitions and doors should be designed to ensure people using accessible dressing and fitting rooms privacy equivalent ...

Can Your Lockers/Benches Be Made ADA Compliant?

The 2010 ADA Standard, states in Section 225.2 that at least 1 of 200 lockers in a facility must but accessible and that in a facility with more space than 201, 10 plus 2% of lockers must be accessible.





Contact Us

For catalog requests, pricing, or partnerships, please visit:

<https://www.id2market.eu>

Phone: +34 910 56 87 45

Email: info@id2market.eu

Scan the QR code to access our WhatsApp.

