



# Common angles of photovoltaic panels





## Overview

---

The best angle for solar panels usually matches your latitude. Flatter tilts work better in summer, steeper tilts in winter. Adjustable mounts give more output but cost more. Roof pitch, shading, and budget also affect the right angle. Fixed setups near your latitude are simple and. The solar panel's best angle determines how much sunlight your panels capture throughout the year, directly impacting energy production and ROI. A correctly tilted system can improve efficiency by 5–10% annually, reducing payback time and boosting long-term savings. In this guide, we'll break it down in simple words — no complicated math, just practical tips that help you capture more sunlight and save more money.



## Common angles of photovoltaic panels

---



### Solar Angle Secret: Are Your Panels Tilted Right?

The tilt of your solar panels directly affects the amount of sunlight impacting their surface, thereby determining the generated volume of electricity. Your system's production and your return on ...

### **What Angle Should My Solar Panels Be? Understanding the Basics of ...**

Recent research emphasizes that determining what angle should my solar panels be at for optimal positioning can enhance power generation by 7-8% annually compared to fixed positions.



### What Is the Best Angle for Solar Panels?

Photovoltaic (PV) panels must absorb as much sunlight as possible to operate at peak performance. The more direct sunlight hits the panels, the more efficiently they can convert solar ...

### What Angle Should My Solar Panels Be?

Recent research emphasizes that determining what angle should my solar panels be at for optimal positioning can enhance power generation by ...

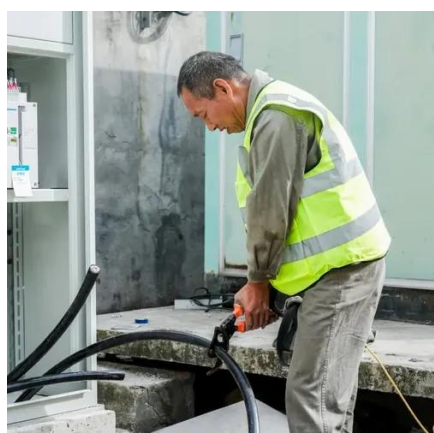


## What is the Best Angle for Solar Panels? Maximizing the Efficiency

As a general rule, the panel tilt angle should roughly equal your latitude during winter when the sun's path is lowest. In summer when the sun is higher overhead, a shallower angle closer to horizontal ...

## Solar Panel Angle and Performance: Why Tilt and Direction Matter

Solar panel orientation is the side of the roof that the module faces. So a tilt, or nearly the entire tilt, and orientation dictate how much sun the panels will 'see' or collect throughout the year.



## [What is the best angle for solar panels - Expert Tips](#)

Panels tilted closer to vertical can grab more low winter sun, while a flatter angle works better in summer. If adjusting isn't your thing, just stick with the latitude rule and you'll still get solid ...

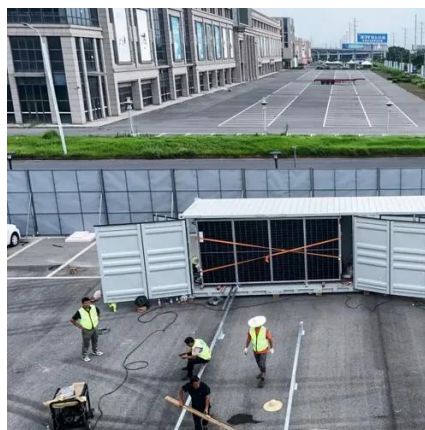
## [Best Angle for Solar Panel Installation:](#)



## [Complete Guide 2025](#)

Northern Hemisphere: The best direction for solar panels is true south. This ensures panels face the sun most of the day. Southern Hemisphere: Panels should face true north. East or West Facing Panels:

...



## **What's the Best Angle for Solar Panels to Get Maximum Output?**

Learn what goes into determining the best angle for solar panels to optimize energy output and how you can ensure your solar system is designed to maximize efficiency of your solar ...

## [Solar Panel Best Angle , Tilt & Orientation Guide 2025](#)

In this guide, we'll break down the science behind the best solar panel angle, explain how to calculate it based on latitude, show seasonal adjustments, and share competitor-winning insights ...



## **Solar Panel Angle Calculator**

Our solar panel angle calculator takes the guesswork out of panel positioning, suggesting panel tilt angles based on your location's latitude and your willingness to reposition based on the sun's ...



## Contact Us

---

For catalog requests, pricing, or partnerships, please visit:

<https://www.id2market.eu>

Phone: +34 910 56 87 45

Email: [info@id2market.eu](mailto:info@id2market.eu)

Scan the QR code to access our WhatsApp.

