



# Common cylindrical battery cell 21700





## Overview

---

The 21700 battery is a rechargeable lithium-ion battery with a cylindrical shape, measuring 21 mm in diameter and 70 mm in length. It was first introduced in 2017 by a Tesla and Panasonic collaboration. 7V and a capacity of up to 5,000mAh, making it a powerful and efficient energy source. Its energy density ranges between 250 Wh/kg and 300 Wh/kg, depending on the. In this article, we'll take a deep dive into the features, specifications, and typical applications of 21700 batteries. Whether you are a consumer, a manufacturer, or just someone interested in energy storage solutions, this guide will provide you with all the information you need. With a standard size of 21mm in diameter and 70mm in length, these batteries were developed as a next-generation improvement over 18650 cells, offering increased power output. The Lithium-Ion 21700 battery has quickly gained popularity in the tech and electric vehicle (EV) industries, providing impressive power density and performance. From electric bikes to power tools and electric vehicles, this battery offers a perfect balance of capacity, power output, and.



## Common cylindrical battery cell 21700

---

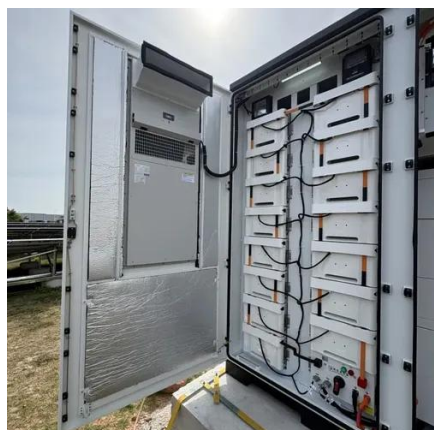


### 21700 Battery: A Complete Guide

A 21700 battery is a rechargeable, cylindrical lithium-ion cell, with dimensions of 21mm in diameter and 70mm in length. They're often used in flashlights, electric vehicles, e-bikes, and other ...

### [Everything You Need to Know About Lithium-Ion 21700 ...](#)

Explore the advantages and key specifications of 21700 batteries, and understand their impact on electric cars, power tools, and energy storage solutions.



### Battery Cell Formats Explained: Cylindrical, Prismatic, and Pouch Cells

Battery Cell Formats Explained: Cylindrical, Prismatic, and Pouch Cells If you zoom out far enough, the global energy transition rests on an unglamorous but decisive choice: the shape of a ...

### [18650, 21700, 30700, 4680 and other Li-ions](#)

This FAQ begins by reviewing the broad landscape of cylindrical Li-ions, including protected and non-protected cells for various applications. It then digs more deeply into a ...



48V 100Ah

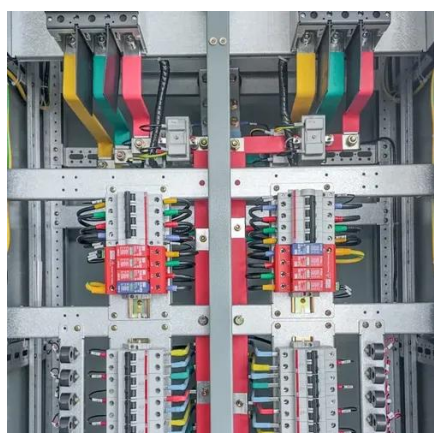


## 21700 Cylindrical Cells

For this article we will concentrate on the 21700 format, this is migrating to the 46mm diameter cylindrical cells to reduce pack costs.

### [21700 Cylindrical Lithium-Ion Battery Cell](#)

Delivering 220-320 Wh/kg energy density, they enable long flight times (30+ mins) and support fast charging (2C). Perfect for aerial photography, surveillance, and delivery drones. The 21700 ...



### [Understanding the 21700 Battery and Its Specifications](#)

The 21700 battery is a cylindrical lithium-ion battery with a diameter of 21mm and a length of 70mm. It offers a nominal voltage of 3.7V and a capacity of up to 5,000mAh, making it a ...

### [21700 Batteries , High-Performance](#)



## Lithium-Ion Cells

With a standard size of 21mm in diameter and 70mm in length, these batteries were developed as a next-generation improvement over 18650 cells, offering increased power output, extended runtime, ...



## Exploring the 21700 Battery: Your Ultimate Guide

As mentioned earlier, the 21700 battery is 21mm in diameter and 70mm in length. This cylindrical shape is the same as other lithium-ion cells, but the extra length and diameter allow for ...

## **21700 Cylindrical cells - Comparison of economical vs premium models**

The key takeaway is that compared to 18650 cells, larger cells such as 21700 have a higher energy density, higher cycle life, lower costs and increased system reliability because of fewer ...





## Contact Us

---

For catalog requests, pricing, or partnerships, please visit:

<https://www.id2market.eu>

Phone: +34 910 56 87 45

Email: [info@id2market.eu](mailto:info@id2market.eu)

Scan the QR code to access our WhatsApp.

