



# Communication Engineering Testing Base Station





## Overview

---

In this article, we target the audience of Wireless Communications Engineers working within Telecommunications Carriers, and we discuss comprehensive strategies for base station design that integrate cutting-edge engineering with powerful business intelligence and data. In this article, we target the audience of Wireless Communications Engineers working within Telecommunications Carriers, and we discuss comprehensive strategies for base station design that integrate cutting-edge engineering with powerful business intelligence and data. Base station testing is a thorough procedure that incorporates several elements and approaches to assess the effectiveness of base stations. Let's examine the main components and factors that go into base station testing: 1. Receiver sensitivity, in-channel sensitivity, and dynamic range measurements are essential to analyze the uplink fixed reference channel (FRC) for 5G NR gNB. Base station (BS) performance is vital for delivering expected quality of experience to end users. These Advanced Antenna System technologies are applied also on LTE base stations to improve network capacity as well as reduce power. Different organizations may use different job titles for the person commanding the ground station (i., TM Chief, Test Director, Test Conductor). The radio call sign for this role is typically "TM" or "Control" "Flight crew" to refer to whichever test aircraft crew member (pilot-in-command. such as mobile phones & IoT devices to the rest of the network. The explosion of IoT technology in the form of technologies for smart devices and self-driving cars has increased the importance of reliable RANs to the overall network.



## Communication Engineering Testing Base Station



### [How to Test 5G NR Base Station Receivers](#) [. Keysight](#)

Learn how to use a vector signal generator, frequency extender, and signal generation software to characterize performance, verify RF subsystems, and conduct functional testing.

### Testing the Base Station RAN for Staging, Deployment and Repair

As 5G becomes more and more prevalent, and telecommunication companies begin to deploy large numbers of base stations, Valid8 plays a critical role in ensuring the proper configuration and successful operation of the ...



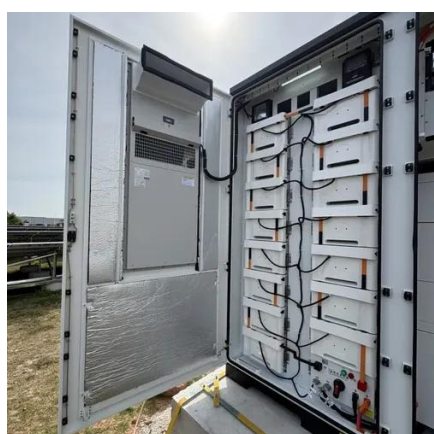
### [Signaling Testers \(Base Station Simulators\)](#) , Anritsu America

Anritsu's Signaling Testers, also known as base station simulators, support a wide range of communication standards including 2G, 3G, 4G (LTE/LTE-A/LTE-A Pro) and 5G.



### [3GPP base station conformance testing](#)

Rohde & Schwarz offers a broad solutions portfolio for base station conformance testing. The solutions range from high-performance signal generators and signal analyzers to turnkey test systems including shielded ...



## [Base Station Testing: A Comprehensive Guide](#)

In wireless communication networks, base stations or cell towers are evaluated and assessed for their functionality, performance, and dependability through a procedure known as base station testing.

## [Base Station Design for Wireless Communications Engineers](#)

In this article, we target the audience of Wireless Communications Engineers working within Telecommunications Carriers, and we discuss comprehensive strategies for base station design that ...



## [Flyriver: Testing A Cellular Base Station](#)

In this essay, we will explore the process of testing a cellular base station, highlighting key considerations, tools, and best practices to ensure optimal performance and reliability.

## Base station testing



Traditionally base stations have been verified by measuring their performance conductively at the antenna interface. With 5G, we enter a new and exciting era for base station design.



### [Radio Communication Test Station MT8000A , Anritsu America](#)

The Base Station Test Suite for NR mmWave MX800045A/Base Station Test Suite for NR Sub-6 GHz MX800046Am are non-signaling RF test software for production-line testing of 5G NR base stations.

### [Flight Test Engineering Reference Handbook](#)

In accordance with experienced FTE feedback from across industry, below are suggested best practices for communications between flight and ground crews. This guideline uses the following terminology.





## Contact Us

---

For catalog requests, pricing, or partnerships, please visit:

<https://www.id2market.eu>

Phone: +34 910 56 87 45

Email: [info@id2market.eu](mailto:info@id2market.eu)

Scan the QR code to access our WhatsApp.

