



Current direction of battery cabinet





Current direction of battery cabinet



[Direction of Electric Current , Explained with Diagram](#)

The direction of electric current is in the direction of movement of positive charge. Thus, the current in the external circuit flow from the positive terminal to the negative terminal of the battery.

-48 VDC Battery Cabinet Installation and User Manual (Section ...

Verify that no current will flow when the battery is connected or disconnected by opening battery disconnects (if available) or adjusting the system to match battery voltage.



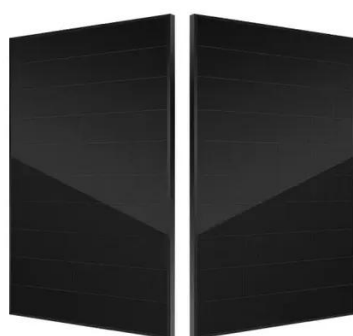
[Current direction of battery cabinet](#)

Nov 13, 2025 · The direction of the current inside the battery is the same as outside the battery. In other words, the current is moving in the same direction everywhere in the loop.



BC58 Battery Cabinet Installation, Operation, & Maintenance ...

Battery cabinets that are not supplied with an incorporated DC output disconnect device must have an appropriate disconnect device provided external to the cabinet.

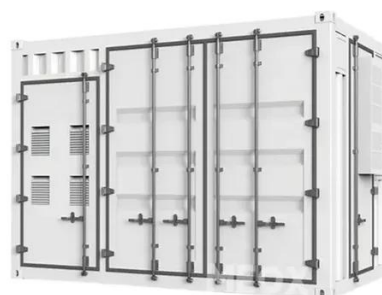


The Mysterious Case of Battery Current: Does it Really Flow ...

When a battery is discharging (i.e., providing power to a device), the current flows from the positive terminal to the negative terminal inside the battery. Yes, you read that correctly - the current ...

BESS CABINET

A BESS cabinet (Battery Energy Storage System cabinet) is no longer just a "battery box." In modern commercial and industrial (C& I) projects, it is a full energy asset --designed to reduce electricity ...



How to measure the output current and voltage of the battery ...

To accurately measure the instantaneous current output of a battery using a multimeter, follow these steps: Prepare the battery and multimeter: Ensure the battery is disconnected from any circuit. This ...

Battery Flow Directions:



Understanding Current, Electron Movement, ...

In a battery, current flows from the positive electrode (cathode) to the negative electrode (anode) through the external circuit. The rate of this flow can influence the power output and ...



480.9 Battery Locations.

Working space shall be measured from the edge of the battery cabinet, racks, or trays. For battery racks, there shall be a minimum clearance of 25 mm (1 in.) between a cell container and any wall or ...

Direction of current flow , Information by Electrical Professionals for

Direction of current flow has nothing to do with where something is earthed or connected to a chassis or cabinet. If I analyze a circuit that contains an electron tube, then the direction of current ...





Contact Us

For catalog requests, pricing, or partnerships, please visit:

<https://www.id2market.eu>

Phone: +34 910 56 87 45

Email: info@id2market.eu

Scan the QR code to access our WhatsApp.

