



Distance between EMS base station and residence





Distance between EMS base station and residence



Finding Your Safe Haven: Optimal Distances to Live from Cell ...

Studies have suggested a correlation between close proximity to these towers and increased risks of health issues, such as brain tumors and other ailments. A comprehensive review ...

[Mobile Base Station Roles and Radiation vs Distance](#)

Base stations are designed and operated to comply with these standards to ensure that exposure levels remain within internationally accepted limits. For additional precaution, users can ...



Evaluated minimum safe distances for mobile-communication base stations.

Download Table , Evaluated minimum safe distances for mobile-communication base stations. from publication: Comparative Analysis of Electromagnetic Field Exposure Levels and ...



Army PCS Distance Calculator

Where: D -- Distance between locations (miles)
Origin -- Starting location (base, city, or address)
Destination -- New duty station location
Explanation: The system calculates the most direct route ...



5G Cell Tower Distance: How Close is Too Close to Your Home?

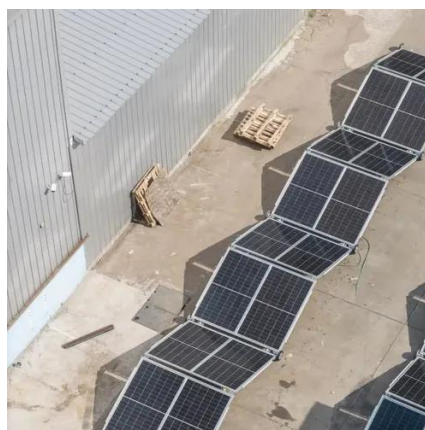
Scientific Evidence: Health Effects by Distance The Naila Study: Landmark Distance Research The Naila Study, conducted by German physicians, examined cancer rates in residents living at various ...



Modeling location-allocation of emergency medical service stations

...

The simulation results showed that adding a floating station would lead to a significant improvement in the performance of existing EMS systems. Kung, Seaton [9] developed an ...



Accepted distances of base stations close to one's home in meter ...

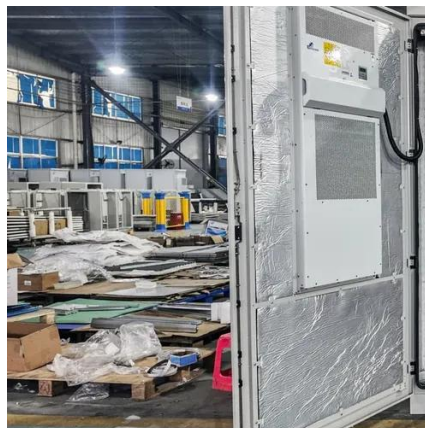
Accepted distances of base stations close to one's home in meter with 0% exposure reduction, indicated by numbers of respondents. For respondents with distance <10 000 meters (n = 1627).

Safe EMF Distance From Cellphone



Towers Calculator

Why Distance From Cell Towers Matters
Radiofrequency radiation from cell towers decreases rapidly with distance. However, close proximity to towers--especially those using higher ...



What Distance is Safe?

Safe Distance from Power Lines... It is difficult to predict a safe distance from power lines, because the EMFs can vary greatly depending upon the situation. The best advice is to measure with a ...



Contact Us

For catalog requests, pricing, or partnerships, please visit:

<https://www.id2market.eu>

Phone: +34 910 56 87 45

Email: info@id2market.eu

Scan the QR code to access our WhatsApp.

