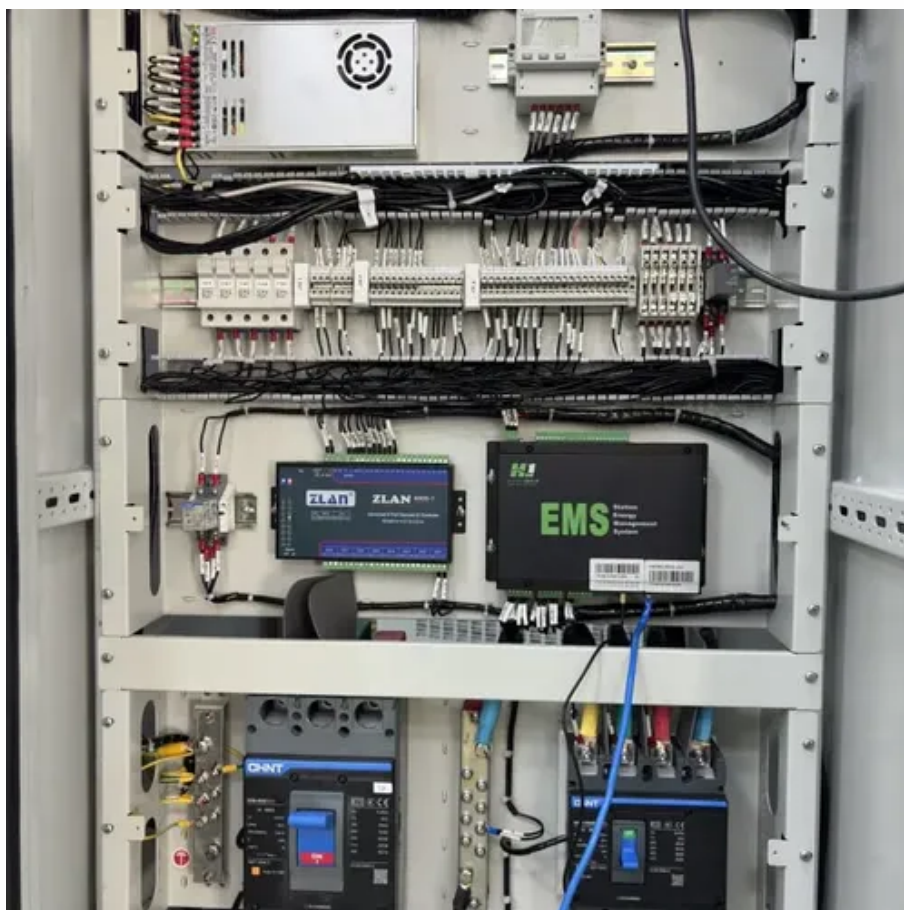




Flywheel energy storage creepage distance





Overview

FESS is typically positioned between ultracapacitor storage (high cycle life but also very high storage cost) and battery storage, (low storage cost but limited cycle life). When energy is extracted from the system, the flywheel's rotational speed is reduced as a consequence of the principle of conservation of energy; adding energy to the. eels are 75-121 and 49-95 kg CO₂ eq/MWh. Flywheel energy storage systems are feasible for short-duration applications, which are crucial for the reliability of an electrical grid. Energy stored in a flywheel energy storage system is proportional to the square of flywheel rotational speed. For a modern high-speed FESS, the energy is. Energy storage flywheels are usually supported by active magnetic bearing (AMB) systems to avoid friction loss. Therefore, it can store energy at high efficiency over a long duration. Based on a modular design, a 1-acre array of Beacon Power flywheels can deliver up to 20 megawatts (26,800-horsepower) over a very. Flywheel Energy Storage Systems (FESS) rely on a mechanical working principle: An electric motor is used to spin a rotor of high inertia up to 20,000-50,000 rpm.



Flywheel energy storage creepage distance

12.8V 200Ah



Technology: Flywheel Energy Storage

Their main advantage is their immediate response, since the energy does not need to pass any power electronics. However, only a small percentage of the energy stored in them can be accessed, given ...

Revisiting Flywheel Energy Storage for Short-distance Ferry Propulsion

Stationary energy storage would need to be suited to rapid recharges during AM and PM peak periods. The projected usable service life of carbon fiber flywheels makes the technology ...



Lower cost larger system

Verified Supplier

20Kwh
30Kwh

Flywheel Energy Storage Systems and their Applications: A Review

The energy crisis, mainly in developing countries, has had an adverse effect on various sectors, resulting in a resort to various energy storage systems to cater for the outages that are experienced. ...

A review of flywheel energy storage systems: state of the art and

Primary candidates for large-deployment capable, scalable solutions can be narrowed down to three: Li-ion batteries, supercapacitors, and flywheels. The lithium-ion battery has a high ...



[Flywheel energy storage creepage distance](#)

Flywheel energy storage (FES) works by accelerating a rotor (flywheel) to a very high speed and maintaining the energy in the system as rotational energy. What are the components of a flywheel ...



[Flywheel Energy Storage System, Springer Nature Link](#)

Flywheel energy storage stores electrical energy in the form of mechanical energy in a high-speed rotating rotor. The core technology is the rotor material, support bearing, and ...



Flywheel energy storage

First-generation flywheel energy-storage systems use a large steel flywheel rotating on mechanical bearings. Newer systems use carbon-fiber composite rotors that have a higher tensile strength than ...



[flywheel energy storage creepage](#)



distance

The critical contribution of this work is studying the relationships and effects of various parameters on the performance of flywheel energy storage, which can pave the way for the implementation of ...



A review of flywheel energy storage systems: state of the art and

There is noticeable progress in FESS, especially in utility, large-scale deployment for the electrical grid, and renewable energy applications. This paper gives a review of the recent ...



Contact Us

For catalog requests, pricing, or partnerships, please visit:

<https://www.id2market.eu>

Phone: +34 910 56 87 45

Email: info@id2market.eu

Scan the QR code to access our WhatsApp.

