



Fonafote load shifting





Overview

This technique involves strategically adjusting the timing of energy-intensive processes to align with periods of optimal energy generation and lower electricity rates. What Is Load Shifting?

Before we can talk about load shifting, we need to clarify what we mean by load. An electrical load is any component of an. To keep things simple, a load is any device or appliance that uses electricity: your TV, your iPhone charger, your dishwasher. Just like your appliances have physical weight, they also have a “weight” on the grid — meaning they all use different amounts of energy. It's also one of the best energy cost-saving strategies available for homeowners. First used for power demand regulation in the late 1930s, utilities used the technique to level out the peaks and valleys of. Load shifting is an electricity management technique that shifts load demand from peak hours to off-peak hours of the day. In this dynamic environment, the concept of “time of day” has taken center stage, redefining the value of kilowatt hours. A building thermal mass is a free energy storage object, and can provide a load shifting capacity. This paper presents an analysis of a price-based control.



Fonafote load shifting



51.2V 150AH, 7.68KWH

[Automating Energy Load Shifting During Peak Times , Lumin](#)

Load shifting and energy storage together can help you reduce your reliance on the grid altogether. With integrated or add-on energy storage, the Lumin smart panel is the ultimate solution for responsive ...

[The Power of Strategic Load Shifting](#)

After strategic discussions with operations staff, Cascade was able to work with the customer to develop and implement a load shifting strategy. The energy-intensive equipment's operation was rescheduled ...



[What is Load Shifting and How Does it Work? , go-e](#)

What is Load Shifting? The idea of load shifting is to adjust your energy consumption pattern. Instead of using energy during peak hours when everyone else is also trying to power up, ...

[Load Shifting: Energy Storage's Game-Changer](#)

A 2024 MIT study found that improperly sized load-shifting systems can actually increase carbon emissions if they're charged from fossil-fueled grids. It's like using a gas-powered car to recharge ...



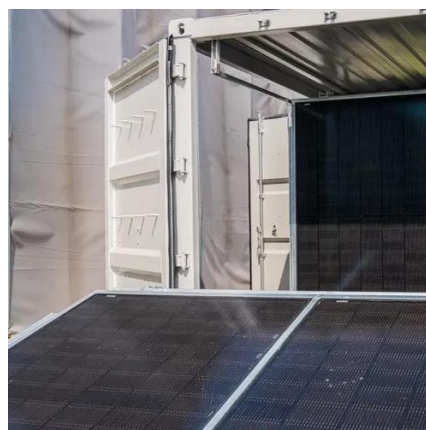
[Load Shifting: What It Is & How It Works](#)

When you load shift, you don't use less electricity. You simply move larger loads, like running your clothes dryer or charging your EV, to a different time of day.



[What is Load Shifting? , Selling Back Excess Energy](#)

What is load shifting, and how can it benefit you? Discover how to maximize your savings and reduce your energy usage.



[Load Shifting Simplified: How and When to Use It, Benefits](#)

Let's explore what it entails, how to implement it, and when it's most relevant. What is Load Shifting? Load shifting involves using electricity during off-peak hours when rates are lower.



[Load Shifting: What Is It and How Does It](#)



Work?

What is load shifting in electricity? Load shifting is an energy management technique that shifts load demand from peak hours to off-peak hours of the day.



energy storage for load shifting fonafote

Load shifting allows you to take advantage of charging during off-peak hours and discharging energy storage during peak hours to support electric vehicle fueling stations or exporting energy to the grid.



What "Load Shifting" Actually Means . Impulse

Good news is, load shifting in your home is a lot easier today than it used to be. For most of the time that electricity has been widely available, the only way to do load shifting in your home ...





Contact Us

For catalog requests, pricing, or partnerships, please visit:

<https://www.id2market.eu>

Phone: +34 910 56 87 45

Email: info@id2market.eu

Scan the QR code to access our WhatsApp.

