



Garbage-to-energy plant





Overview

Waste-to-energy plants burn municipal solid waste (MSW), often called garbage or trash, to produce steam in a boiler, and the steam is used to power an electric generator turbine. This type of power plant is sometimes called a trash-to-energy, municipal waste incineration, energy recovery, or resource recovery plant. Wastes represent a significant and underutilized set of feedstocks for renewable fuel and product generation. These plants play a dual role in modern waste.



Garbage-to-energy plant



Waste-to-energy

Waste-to-energy (WtE) or energy-from-waste (EfW) refers to a series of processes designed to convert waste materials into usable forms of energy, typically electricity or heat, in waste-to-energy plants.

Waste-to-energy plant

Waste-to-energy plants cause less air pollution than coal plants, but more than natural gas plants. At the same time, it is carbon-negative: processing waste into fuel releases considerably less carbon and methane into the air than having waste decay away in landfills or bodies of water. Waste-to-energy plants are designed to reduce the emission of air pollutants in the flue gases exhausted to the atmosphere, such as nitrogen oxides, sulfur oxides and particulates, and to destroy pollutants alre...



Energy Recovery from the Combustion of Municipal Solid Waste (MSW)

Energy recovery from waste is the conversion of non-recyclable waste materials into usable heat, electricity, or fuel through a variety of processes, including combustion, gasification, ...

Waste-to-Energy

Our Waste-to-Energy facilities are designed to convert the waste into electricity for homes and businesses and/or steam for export to industries.



Waste-to-Energy: How It Works

Waste-to-energy uses trash as a fuel for generating power, just as other power plants use coal, oil, or natural gas. The burning fuel heats water into steam that drives a turbine to create electricity.

Energy Recovery from the Combustion of Municipal Solid Waste (MSW)

Energy Recovery from CombustionThe History of Energy Recovery from CombustionFrequent Questions on Energy Recovery from CombustionEnergy recovery from the combustion of municipal solid waste is a key part of the non-hazardous waste management hierarchy, which ranks various management strategies from most to least environmentally preferred. Energy recovery ranks below source reduction and recycling/reuse but above treatment and disposal. Confined and controlled burning, known See more on epa.govwte



Waste-to-Energy - Waste-to-Energy Association - wte

Our Waste-to-Energy facilities are designed to convert the waste into electricity for homes and businesses and/or steam for export to industries.

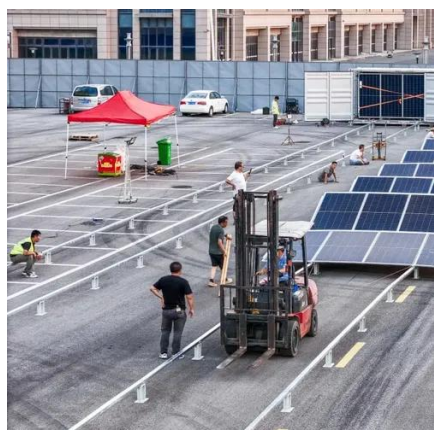


Waste-to-Energy Plants

Waste-to-Energy Plants: Waste-to-Energy (WtE) plants are specialized facilities designed to generate electricity and/or heat by converting municipal solid waste (MSW), industrial waste, or other types of ...

What is Waste to Energy Plant? - The Institute for Environmental

A Waste-to-Energy (WtE) plant is a facility that converts municipal solid waste (MSW) - commonly referred to as garbage or trash - into usable forms of energy, typically electricity, heat, or ...



[Waste-to-Energy , Department of Energy](#)

DC Water's Blue Plains Advanced Wastewater Treatment Plant. Photo courtesy of DC Water. These streams are available now without land-use change and in many cases their utilization helps to ...

Waste-to-energy (MSW) in depth

Waste-to-energy plants burn municipal solid waste (MSW), often called garbage or trash, to produce steam in a boiler, and the steam is used to power an electric generator turbine.



Watch the history of waste-to-energy



power plants in the United States

Waste-to-energy (WTE) plants in the US burn municipal solid waste to generate electricity, contributing less than one percent of the total. Initially developed due to landfill space scarcity, the ...



Waste-to-energy plant

A waste-to-energy plant is a waste management facility that combusts wastes to produce electricity. This type of power plant is sometimes called a trash-to-energy, municipal waste incineration, energy ...





Contact Us

For catalog requests, pricing, or partnerships, please visit:

<https://www.id2market.eu>

Phone: +34 910 56 87 45

Email: info@id2market.eu

Scan the QR code to access our WhatsApp.

