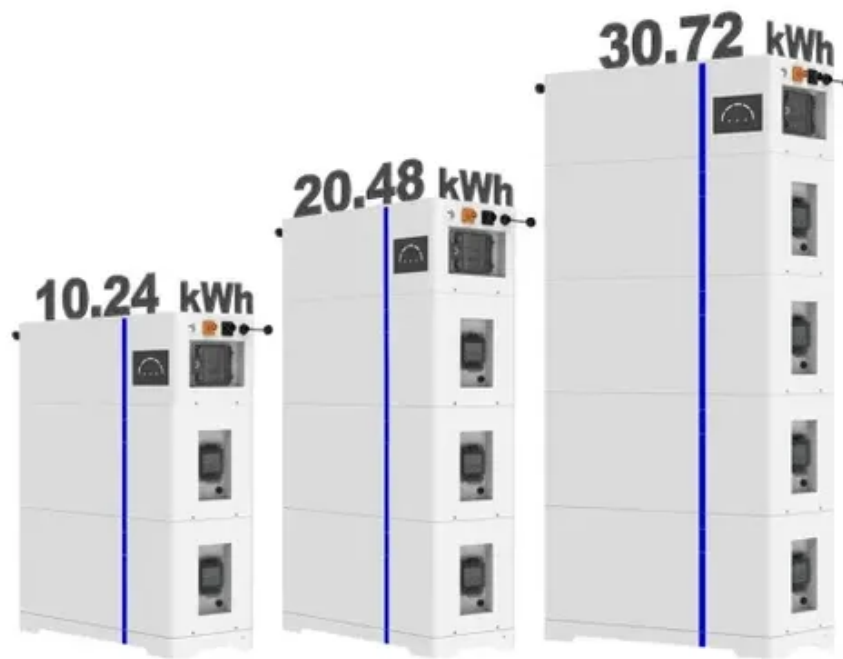




Geographical location of wind turbines

ESS





Geographical location of wind turbines



U.S. Wind Turbine Database

The United States Wind Turbine Database (USWTDB) provides the locations of land-based and offshore wind turbines in the United States, corresponding wind project information, and turbine technical ...

[Map of Wind Farm Locations Around The World](#)

By using the Wind Farm Locations Map, you can explore the development of wind energy across the country and see the progress being made toward a cleaner, more sustainable energy grid.



[Where Are Wind Turbines Located And Why?](#)

Wind turbines can be placed on various sites due to their natural wind patterns and geographical features. Favorable sites include the tops of smooth hills, open plains and water, and ...

Global Wind Atlas

The Global Wind Atlas is a free, web-based application developed to help policymakers, planners, and investors identify high-wind areas for wind power generation virtually anywhere in the world, and then ...



Where Are The Best Locations For Wind Turbines And What Is Their

As a reminder, the best locations for wind turbines are typically in coastal areas, hilltops, and open plains where wind speeds are consistently high. The capacity of wind turbines can vary ...

[Wind Power Plants Across the Globe \(World Map\)](#)

Data and information about power plants and their location across the globe, plotted on an Interactive world map



Maps and Data

Find maps and charts showing wind energy data and trends.

[What Are the Best Locations for Installing](#)



Wind Turbines?

When evaluating suitable sites for wind turbine installation, several locations stand out due to their natural wind patterns and geographical features. This section explores three of the most

...



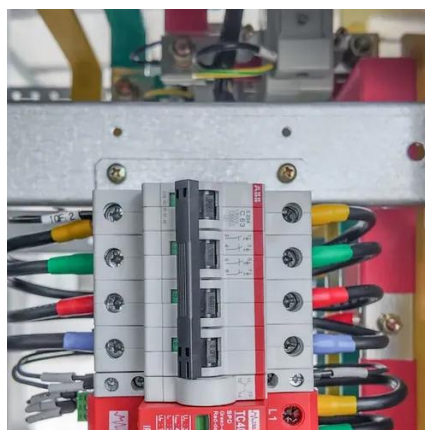
Wind explained Where wind power is harnessed

Favorable sites include the tops of smooth, rounded hills; open plains and water; and mountain gaps that funnel and intensify wind. Wind speeds are generally higher the greater the

...

World Wind Turbine Map

Wind turbine map, always up-to-date with more than 300k turbines worldwide. Open-street-map (OSM) provided info boxes with turbine type, manufacturer, rated power, hub height, rotor diameter and ...





Contact Us

For catalog requests, pricing, or partnerships, please visit:

<https://www.id2market.eu>

Phone: +34 910 56 87 45

Email: info@id2market.eu

Scan the QR code to access our WhatsApp.

