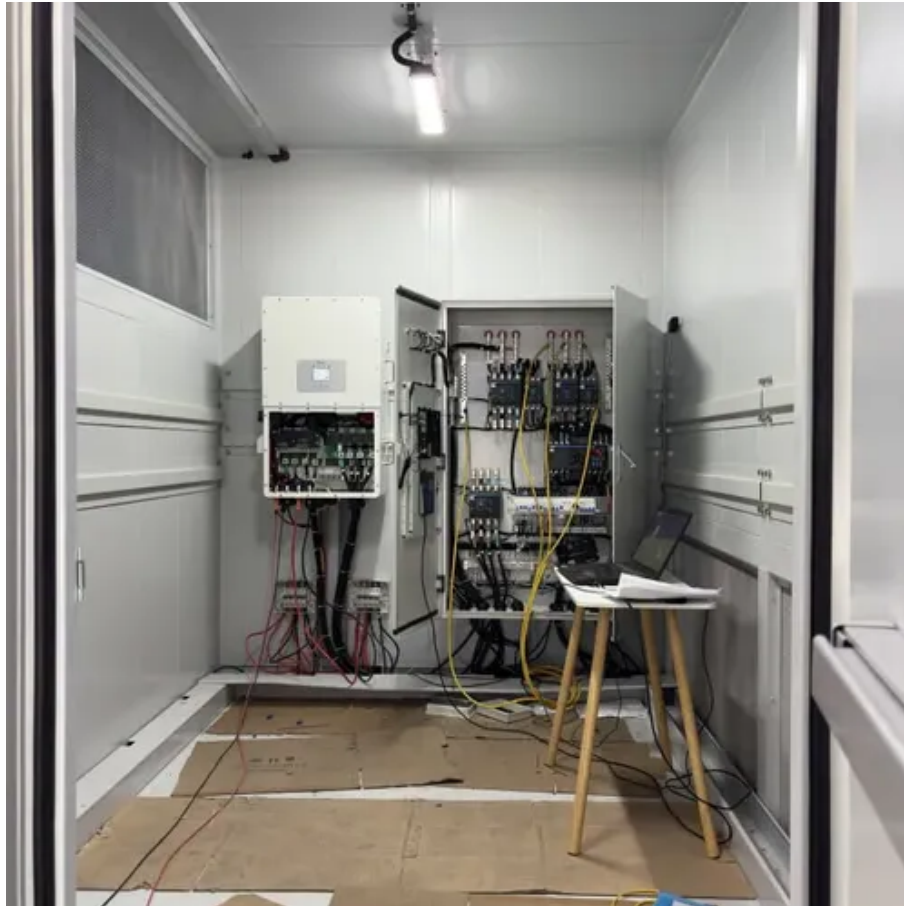




High-power AP outdoor base station installation





Overview

This comprehensive guide covers the step-by-step process for outdoor access point installation to provide reliable network coverage in open areas such as campuses or parks. TP-LINK's 5GHz 300Mbps * Outdoor Wireless Base Station is specifically designed to provide an effective solution for outdoor wireless networking applications. Wall mounting is one of the most common and fastest methods to install the access points to the outside wall, but multiple holes need to be drilled to let the Ethernet. This 10/100 Ethernet port is used to connect the power and should be connected to the LAN and DHCP server. Restart Press and release the Reset button quickly. The UniFi AP can be mounted to a wall or on. Once your computer is on, ensure that your TCP/IP is set to "ON" or "Enabled". Select Internet Protocol Version 4 (TCP/IPv4). 10 and the Subnet Mask address as 255. Our webinars feature experts and leaders sharing how organizations transform to connect, grow, and succeed. We're opening up new possibilities in the.



High-power AP outdoor base station installation

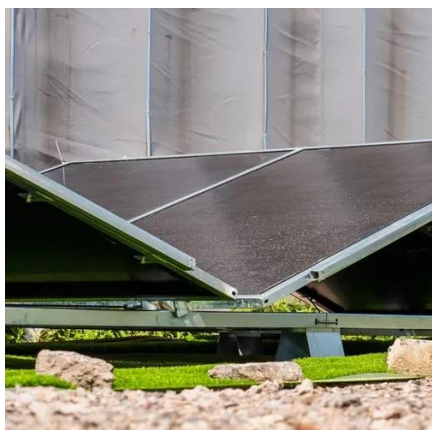


[Installation Guide for Outdoor Access Points](#)

Since the fiber optic cables can only transmit data over the long cable runs, to install the outdoor APs in places where there's no power source available, you can either run another power ...

[5GHz 300Mbps Outdoor Wireless Base Station](#)

Pharos Base Stations works seamlessly with TP-LINK dish and sector antennas to provide efficient PtP and PtMP data transmission. Pharos Base Stations also feature a built-in mount, ...



Quick Installation Guide Outdoor Access Point / Client Bridge

Connect one end of the Ethernet Cable to the LAN(PoE) port of the AP/Bridge and the other end to the PoE Port on the PoE Adapter. Connect the Power Cord with the PoE Adapter and plug the other end ...

Video Series: Best Practices for Installing Outdoor Wireless Access

This video series outlines the various best practices to be followed and common pitfalls to be avoided while installing outdoor wireless access points.



UAP-Outdoor-5 Quick Start Guide

Perform the steps for the appropriate installation: This device must be professionally installed and it is the professional installer's responsibility to make sure the device is operated within local country ...



[Step-by-Step Outdoor Access Point Installation Guide](#)

This comprehensive guide covers the step-by-step process for outdoor access point installation to provide reliable network coverage in open areas such as campuses or parks.



Outdoor AP installation recommendations , Knowledge Base , Ruckus

It is recommended for AP outdoor installation to protect the AP as well as the indoor equipment electrical surges. Surges that can reach the internal equipment from the outside, or least common, surges that ...



[Quick Installation Guide-Outdoor Wireless AP Kits-HW6100](#)

This document provides instructions for installing an outdoor wireless access point base station kit. It describes: 1) Attaching the antenna, lightning arrester, and mounting brackets to the access point ...

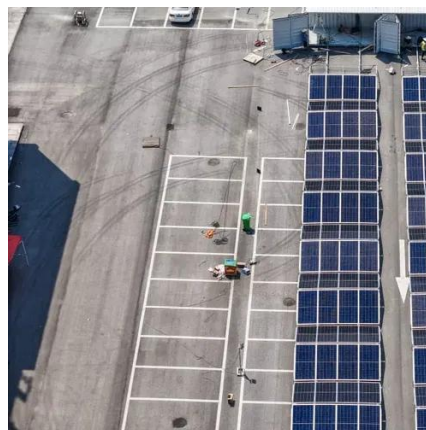


[UniFi Wi-Fi BaseStation Quick Start Guide](#)

TOUGH Cable™ is designed for outdoor installations. It is the professional installer's responsibility to follow local country regulations, including operation within legal frequency channels, output power, ...

[Installation Guide for Outdoor Access Points](#)

Estimate The Required Coverage Areas and Bandwidth Needs
Identify The Mounting Locations For Outdoor APs
Install The PoE Surge Protectors For Lightning Protection
The mounting options and locations somehow have a great impact on what the final design will be and determine whether it could meet the required coverage areas. There are basically four options in outdoor AP installation: wall mounting, pole mounting, corner mounting and roof mounting. Wall mounting is one of the most common and fastest methods to See more on fastcabling ubnt



UAP-Outdoor-5 Quick Start Guide - Ubiquiti

See More

Perform the steps for the appropriate installation: This device must be professionally installed and it is the professional installer's responsibility to make sure the device is operated within local country ...



[10 Best Outdoor Access Points, Reviews & Buying Guide](#)

We've tested a range of outdoor access points to bring you the best options available in this guide. For those who need help in understanding the key features to look for when buying an ...



Contact Us

For catalog requests, pricing, or partnerships, please visit:

<https://www.id2market.eu>

Phone: +34 910 56 87 45

Email: info@id2market.eu

Scan the QR code to access our WhatsApp.

