



High power selection for outdoor power supply





Overview

Need a dependable outdoor power supply for camping, RV trips, or emergency use?

This guide explores the best high-capacity options, industry trends, and practical tips to help you choose systems that deliver uninterrupted power in demanding environments. Let's dive into why large-capacity outdoor. With the demand for reliable and convenient outdoor power expected to rise, selecting a dependable and safe outdoor power solution is essential to an optimal outdoor experience. 500W or 1000W outdoor power supplies, which is more suitable?

To be honest, the high-power ones are very cool to use, but the weight and volume have also increased.



High power selection for outdoor power supply

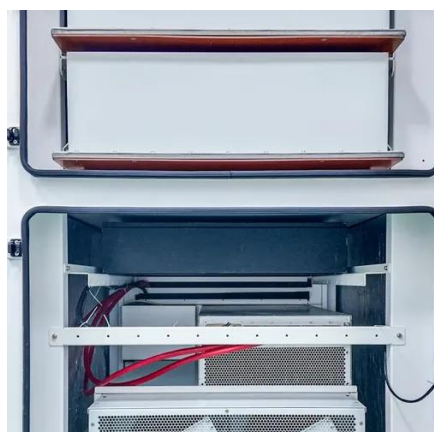


Outdoor Power Supply Parameter Comparison: Key Factors for Smart Selection

If you're planning camping trips, managing outdoor events, or preparing emergency backup solutions, understanding outdoor power supply parameters is like knowing the secret recipe for energy ...

[Outdoor AC UPS , Outdoor Backup Power Supply](#)

You can trust us to deliver a custom power solution that keeps your operation up and running without a hitch. Don't wait for an outage to disrupt your work. Upgrade to our high-quality outdoor AC UPS and ...



[How to Choose the Right Outdoor Power Supply](#)

Find out how to select the ideal outdoor power supply for camping, work, emergencies, and more with this easy-to-follow expert guide.

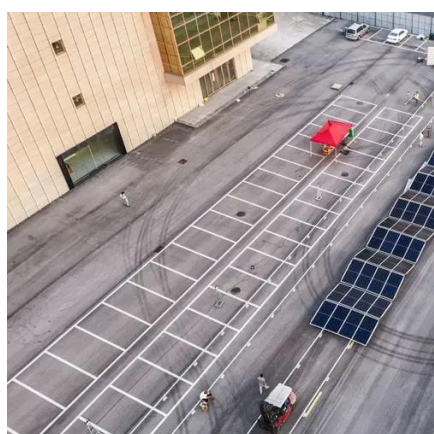
Top Recommendations for Large-Capacity Outdoor Power Supplies: ...

Need a dependable outdoor power supply for camping, RV trips, or emergency use? This guide explores the best high-capacity options, industry trends, and practical tips to help you choose systems that ...



Bringing The Indoors Out: The Ultimate Guide to Outdoor Power and

Outdoor power and charging solutions have become more versatile and efficient, catering to the needs of a variety of applications and end-users. Learn how to best select the right outdoor power and ...



Selection guide for outdoor power sources: How to find the right

If you need power for extended periods of time, such as camping or hiking, then choosing a high-capacity outdoor power supply is key.



How to Choose an Outdoor Power Supply in 2025: From Camping to

1500W to 2500W Power: Best for high-power devices like CPAP machines, electric stoves, larger fridges, or off-grid RVs. These are also good for emergency power backup to run multiple ...





[How to choose an outdoor power supply?](#)

Discover how to choose the right outdoor power supply with Topwell Power's guide. Explore their LiFePO4 battery 500W power supply with USB Type A, Type C, and car charger ...



[How to choose an outdoor power supply?](#)

How to choose an outdoor power supply? The only purpose of this article is to save your time with the data I have compiled and to provide you with a comprehensive introduction: What is ...

[How to choose an outdoor power supply?](#)

In this guide, we'll discuss how to choose the right outdoor power supply, and why the saltwater-powered emergency battery is revolutionizing energy use for adventurers, survivalists, and ...





Contact Us

For catalog requests, pricing, or partnerships, please visit:

<https://www.id2market.eu>

Phone: +34 910 56 87 45

Email: info@id2market.eu

Scan the QR code to access our WhatsApp.

