



# How big a solar panel do I need for a 6w water pump





## Overview

---

A solar water pump sizing calculator is an online tool that estimates: Pump power (Watts) → how much energy your pump needs. Battery capacity (Amp-hours) → storage needed to keep water flowing during cloudy days. For example, a 1000W pump requires at least 1500W of solar panels. Use solar panel specs (VOC, VMP, power) to configure series and parallel connections, based on whether your pump is. How many solar panels do I need to run a water pump?

The number of solar panels you need depends on the pump's power requirement, total daily usage, and your region's sunlight availability. This is our. le pump or surface pump is best. Surface pumps can draw water from 20-25 ft (7-8 m) below ground level, geographic location and season. Proper sizing ensures efficient operation and.



## How big a solar panel do I need for a 6w water pump



### Solar Water Pumps: The Ultimate Guide (Sizing, Cost & Installation)

Answer a few simple questions about your needs, and our tool will give you a powerful, data-driven estimate for the pump, panel, and controller size you'll need for your project.

### What size solar panel is needed for a solar surface water pump?

To determine the power requirement of your pump, check the manufacturer's specifications. These details are usually provided in the product manual or on the pump's label. Make sure to note the ...



### Guide to Solar Water Pump Sizing

Please note that the listed depths are the depth limits for each configuration, and if the pumping results are at the low end of your requirements, look to increase your solar panel configuration or visit the ...

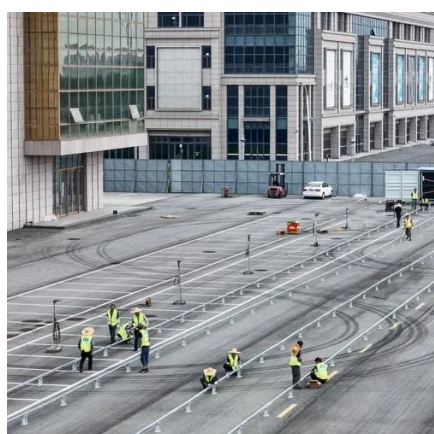
### [How Many Solar Panels Do You Need to Run a Water Pump?](#)

To run a water pump on solar, multiply the pump's power by 1.5 to calculate the total solar panel wattage needed. For example, a 1000W pump requires at least 1500W of solar panels.



### What size solar panel do I need to run a water pump?

The number of solar panels will depend on the wattage that a particular pump will need to operate, the phase type of the pump, and the age of the pump. You need to ensure that there is sufficient wattage ...



### How Many Solar Panels for a Solar Water Pump?

A standard 1 HP (horsepower) water pump typically requires between 800 to 1200 watts of solar panels. This usually translates to three 400W panels or twelve 100W panels. The exact number depends on ...



### What Type of Solar Panel Do You Need for a Water Pump?

To ensure optimal performance of your water pump, you need solar panels that match the wattage requirements of your pump. Typically, 100 to 375-watt panels are used, depending on the ...



### Solar Water Pump Sizing Calculator - 9to5



## [Equipment](#)

Click Calculate, and the tool gives you results like: This means a 500W solar panel system with a 12V 150Ah battery setup would be a good fit. Simple - No technical background needed. Accurate - ...



## **How to calculate the number of solar panels for a water pump?**

To determine how many panels you need, divide your total energy requirement (pump wattage × daily hours of use) by the energy output per panel. For example, if your submersible water pump needs ...

## [How To Calculate Solar Power Water Pump](#)

Choosing the right solar pump involves assessing water needs, pump type, solar panel sizing, and pump efficiency. When sizing Grundfos solar solutions, it's critical to match the pump to ...





## Contact Us

---

For catalog requests, pricing, or partnerships, please visit:

<https://www.id2market.eu>

Phone: +34 910 56 87 45

Email: [info@id2market.eu](mailto:info@id2market.eu)

Scan the QR code to access our WhatsApp.

