



How big is the photovoltaic panel of the house





Overview

A typical residential solar panel measures about 65 inches by 39 inches (roughly 5.25 feet), though slight variations exist between manufacturers. 5' aren't arbitrary - they represent the optimal balance between power output, installation ease, and roof space utilization. The size can vary depending on the brand, but this is the typical measurement for residential panels. In this blog, we'll break down the standard sizes of solar panels, explain how panel dimensions impact performance, and help you. Solar panel size shapes everything from the watts to the ease of lifting a module onto a roof.



How big is the photovoltaic panel of the house

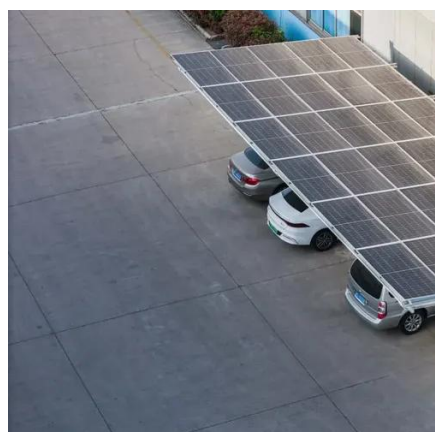


Solar Panel System Sizing Guide , Calculate Perfect Home System Size

Getting the right solar panel system sizing is crucial for maximizing your investment and ensuring optimal energy production. Whether you're a first-time solar buyer or upgrading an existing system, ...

[Solar Panel Size Guide , Best Panel Size for Your Roof](#)

Solar cells are assembled in grids, and the most common configurations are 60-cell panels for residential use and 72-cell panels for commercial or utility use. A 60-cell panel (often seen on ...



[How Big Is the Average Solar Panel? Dimensions & Size Guide](#)

How Big Is the Average Solar Panel? The average solar panel is around 65 inches by 39 inches, providing about 300 watts of power. The size can vary depending on the brand, but this is the ...

[Perfect Solar Panel Sizes for Your Home \(Expert Sizing Guide\)](#)

A typical residential solar panel measures about 65 inches by 39 inches (roughly 5.4 feet by 3.25 feet), though slight variations exist between manufacturers. These standard dimensions ...

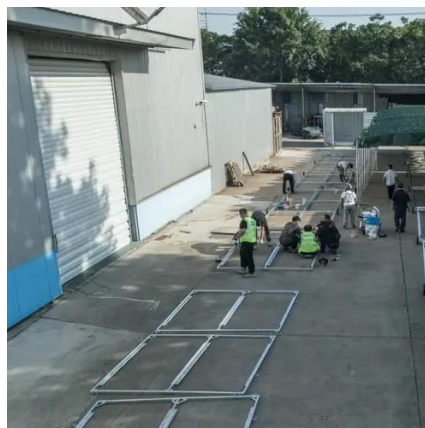


[standard solar photovoltaic panel sizes explained](#)

The standard residential solar photovoltaic panel size you'll see most often is based on a 60-cell configuration, typically measuring about 67 inches long by 40 inches wide. This size offers the ...

Standard Solar Panel Sizes And Wattages (100W-500W Dimensions)

To bridge that gap of very useful knowledge needed, we have compared and averaged the sizes of 100-watt to 500-watt solar panels available on the market. The goal here is to get to the average solar ...



Understanding Solar Panel Dimensions In 2025: A Complete Size Guide

Understanding solar panel dimensions is crucial for planning your solar system installation, maximizing efficiency, and ensuring compatibility with your available space. In this blog, ...

[Solar Panel Size & Dimensions Guide 2025](#)



[Complete Specs](#)

A standard residential solar panel measures 65-66 inches long by 39-40 inches wide by 1.5-2.0 inches thick, covering approximately 17.5-18.3 square feet. These 60-cell panels weigh 40-46 ...



How Big Are Solar Panels? Here's Their Typical Size and Weight

Individual solar panels come in a lot of different shapes and sizes, but generally speaking, they're about 3 feet by 5 feet, or about 15 square feet per panel, according to Pamela Frank, vice

Solar Panel Size Dimensions

In 2025, the average residential solar panel measures about 65 x 39 inches (1.65 x 1 meter), weighs around 40 pounds (18 kg), and produces roughly 400 watts. But size alone doesn't tell the full story.





Contact Us

For catalog requests, pricing, or partnerships, please visit:

<https://www.id2market.eu>

Phone: +34 910 56 87 45

Email: info@id2market.eu

Scan the QR code to access our WhatsApp.

