



How fast is wind power generation





Overview

Wind turbines start generating electricity at a minimum wind speed of around 6 mph and reach their maximum capacity at approximately 35 mph. The cut-in speed is the minimum speed required for a turbine rotor to overcome friction and begin generating electricity. As wind speed increases, power output escalates until the rated wind speed is achieved and the turbine produces maximum. How Fast Do Wind Farm Windmills Turn?

Wind turbines' rotation speed can be measured in two ways: revolutions per minute (RPM) and tip speed. For peak efficiency, target speeds between 25 to 55 mph before safety measures engage to shut down the turbine. For a more in-depth understanding of how wind speed impacts turbine operations, there is. Wind speed is a contributing factor to the energy output potential of a wind turbine.



How fast is wind power generation



What Is the Minimum and Maximum Wind Speed for Operating a ...

To operate a wind turbine effectively, aim for wind speeds of 7 to 9 mph for power production. For peak efficiency, target speeds between 25 to 55 mph before safety measures engage ...

[Wind Maps Highlight Wind Speed and Power Potential](#)

This trio of wind maps based on data from the Global Wind Atlas highlight wind speed, power density, and capacity factors for wind power generation.



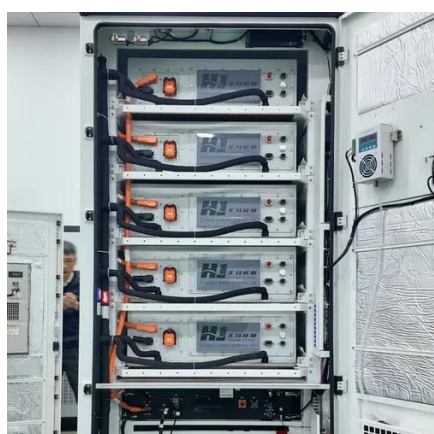
[Optimal wind speeds for turbine efficiency Business ...](#)

Discover wind speed for wind turbine efficiency, from cut-in to cut-out speeds, and how low wind speed turbines boost output in challenging conditions.

Electricity generation from wind

In 2022, wind turbines were the source of about 10.3% of total U.S. utility-scale electricity generation. Utility scale includes facilities with at least one megawatt (1,000 kilowatts) of electricity

...

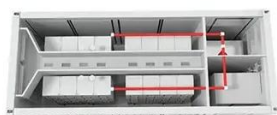


[How Fast Do Wind Turbines Turn in MPH: Awe-Inspiring 7 Facts](#)

How fast do wind turbines turn in mph -- discover how these renewable energy giants reach surprising speeds, the factors influencing their rotation, and the astonishing benefits of harnessing wind power.

[How Fast Do Wind Farm Windmills Turn](#)

Wind turbines start generating electricity at a minimum wind speed of around 6 mph and reach their maximum capacity at approximately 35 mph. Higher wind speeds lead to faster rotation ...



Wind Turbine Speed

Every unique wind turbine has a different optimum blade speed that produce the highest amount of electrical power during operation. There are two different speed measurements used for the speed of ...

How Fast Are Wind Turbines?



Wind turbines don't spin at breakneck speeds, but fast enough to efficiently convert wind energy into electricity. The blades of a modern utility-scale wind turbine typically rotate at speeds of ...



Wind Energy Factsheet

Wind supplies 57% of Denmark's electricity generation and over 20% in ten other countries. 7 Global wind additions reached a record 117 GW in 2023. 7 In 2024, onshore installations surpassed 100 GW ...

[Small Wind Turbines: How Fast Must the Wind Blow?](#)

According to the US Energy Information Administration, small wind turbines require at least nine mph (4 m/s) wind speeds. The cut-in wind speed, or the speed at which a wind turbine begins to ...





Contact Us

For catalog requests, pricing, or partnerships, please visit:

<https://www.id2market.eu>

Phone: +34 910 56 87 45

Email: info@id2market.eu

Scan the QR code to access our WhatsApp.

