



How long does it take for the inverter to convert to 220v





Overview

Scientifically speaking, the transformer in an inverter must have a 1:19 turn ratio in order to convert 12V DC to 220V AC. So an inverter will convert the lower voltage of the battery into 120 volts in order to run AC appliances. If playback doesn't begin shortly, try restarting your device. An error occurred while retrieving sharing information. " A 100Ah battery stores twice as much power as a 50Ah model. This comprehensive guide will walk you through the theory, components, design considerations, and step-by-step construction of a reliable 12V to 220V. If we want to convert 12V DC to 220V AC, we often use the inverter composed of input interface voltage starting circuit, DC conversion circuit, feedback circuit, LC oscillation circuit and its output circuit load, etc. to solve the problem of the shoes and most of all.



How long does it take for the inverter to convert to 220v



[12 Volt Battery Inverter: How Long it will Last + Calculator](#)

In general, a battery lasts about 10-17 hrs with a 12-volt battery inverter. Batteries work by creating current flow in a circuit through exchanging electrons in ionic chemical reactions.

[How does a 12V to 220V Inverter Work?](#)

Scientifically speaking, the transformer in an inverter must have a 1:19 turn ratio in order to convert 12V DC to 220V AC. The inverter works by switching back and forth the direction of the ...



[How long does it take for the inverter to convert to 220v](#)

The first thing to keep in mind when it comes to enriching your understanding of the internal structure of an inverter device, is that the converter circuit converts alternating current (AC) coming from the ...

[How long does an Inverter Solar 12v 220v usually last?](#)

As a supplier of Inverter Solar 12v 220v, I often get asked about how long these inverters usually last. In this blog post, I'll delve into the factors that influence the lifespan of an Inverter Solar 12v 220v and ...

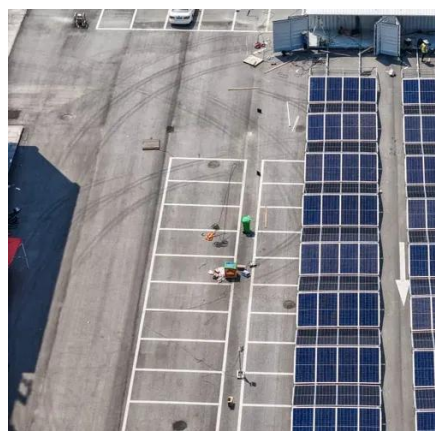


Complete Guide to Building a DC to AC Inverter Circuit: 12V to 220V

This comprehensive guide will walk you through the theory, components, design considerations, and step-by-step construction of a reliable 12V to 220V inverter circuit.

[How does a 12V to 220V Inverter Work?](#)

If a 12V AC is converted to 220V, the turns ratio of the primary and secondary coils in the transformer in the inverter has to be 1:19. This process involves the knowledge of electromagnetism.



How Long Can a Car Battery Inverter Convert to 220V? A Practical ...

Meta Description: Discover how long a car battery inverter can power 220V devices. Learn about battery capacity, efficiency, and real-world examples to maximize performance.

[What Will An Inverter Run & For How](#)



Long? (With Calculator)

So I'm gonna explain to you guys in simple words about what you can run on your any size inverter and what are the key point to keep in mind. And also how long your inverter will last with ...



Inverter Usage Time Calculator

Understanding how long your inverter will last is essential for efficient energy management and backup power planning. This guide explores the science behind inverter usage ...

Inverter Usage Calculator

Enter the battery capacity, inverter efficiency, and load power into the calculator to determine the usage time of an inverter. This calculator helps to estimate how long an inverter can ...





Contact Us

For catalog requests, pricing, or partnerships, please visit:

<https://www.id2market.eu>

Phone: +34 910 56 87 45

Email: info@id2market.eu

Scan the QR code to access our WhatsApp.

