



How many inverters are needed for 315kW





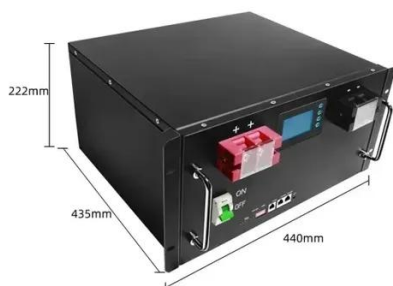
Overview

Enter your solar array capacity and load requirements to determine optimal inverter size. Inverter Size = MAX (Array Capacity × 1.25) for safety margin This formula has been verified by certified solar engineers and complies with industry standards. The number of inverters you need depends on the system design: For small systems (less than 5 kW), a single inverter is usually sufficient. For larger systems, multiple How Many Inverters Do I Need for Solar Panels?

Typically, you only need one inverter for your solar panel system, but for larger. Calculate the correct inverter size for your solar panel system. Before determine the inverter size, the most important thing is to calculate your average daily power consumption (kWh) and calculate your solar panel array size to match your power consumption. You could. The capacity of an inverter is measured in kilowatts (kW), and most household inverters are between 3kW and 10kW. But that's not the whole story.



How many inverters are needed for 315kW



[Complete Solar Inverter Sizing Guide](#)

Get it right and your system runs smoothly for years. In this guide, you'll learn what size solar inverter you need, how to size an inverter for solar systems step by step, how panel output ...

[Solar Inverter Size Calculator , Inverter Sizing Tool](#)

Calculate the optimal inverter size for your solar system. Determine the right inverter capacity based on panel array size, system configuration, and power requirements.



Inverter Capacity Calculator

The inverter capacity calculator helps you find the right inverter size for your home or office. It calculates how much power your devices need, how big the inverter should be, and what ...

Inverter Sizing Calculator

How to use this calculator: Enter your solar array capacity and load requirements to determine optimal inverter size.

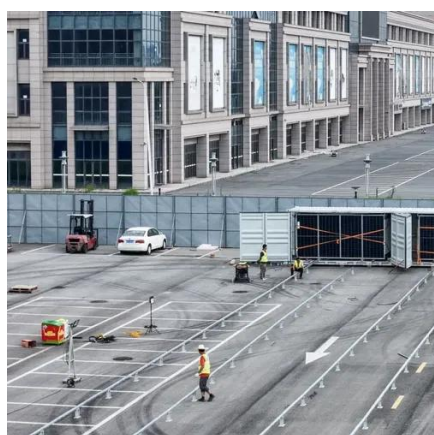


[How many inverters are needed for 315kw](#)

The number of inverters you need depends on the system design: For small systems (less than 5 kW), a single inverter is usually sufficient. For larger systems, multiple ...

Inverter Capacity Calculator

Enter the power requirement of each device and the number of each type of device into the calculator to determine the inverter capacity.



Inverter Capacity Calculator & Formula Online Calculator Ultra

Can I use an inverter with a higher capacity than needed? Yes, but it might lead to inefficiencies and higher costs without additional benefits. This calculator assists users in determining ...

[How many inverters are needed for](#)



315kw

Typically, you only need one inverter for your solar panel system, but for larger setups, you may need multiple inverters or microinverters to optimize power conversion.



[Inverter Size Calculator - self2solar](#)

Choosing the right inverter size is essential for a reliable and efficient solar power system. Our Inverter Size Calculator simplifies this task by accurately estimating the recommended ...

How to Choose the Right Size Solar Inverter: Step-by-Step with Real

This guide walks you through calculating inverter size based on panel capacity, power usage, and safety margins. We use real examples from installations in Texas and Queensland to ...





Contact Us

For catalog requests, pricing, or partnerships, please visit:

<https://www.id2market.eu>

Phone: +34 910 56 87 45

Email: info@id2market.eu

Scan the QR code to access our WhatsApp.

