



How many kilowatts does a 545 photovoltaic panel have





Overview

The 545 model typically delivers 545W power output with 21. While everyone focuses on wattage, smart buyers dig deeper. Most common solar panel sizes include 100-watt, 300-watt, and 400-watt solar panels, for example. How Much Sun Do You Get (Peak Sun Hours). Obviously, the more sun you get, the more kWh a solar panel will produce. Superior Power Density: 545W panels deliver 35-45% more power generation per panel compared to standard 400W modules, making them ideal for space-constrained installations while reducing overall system costs through fewer required panels and simplified installation. Advanced Half-Cell PERC. Total Solar Panel Size (W): Input the total wattage of your solar panel system. Importance of Solar Panel kW Calculation Details: Solar systems are typically rated in kW, so this conversion helps in system sizing, energy production estimation, and comparing different. With a power output of 545 watts, these panels are well-suited for meeting the energy needs of both homes and businesses. If you're interested in deploying solar power as your main source of electricity, understanding your needs is the.



How many kilowatts does a 545 photovoltaic panel have



Solar Panel Power Calculator

Solar Panel Calculator is an online tool used in electrical engineering to estimate the total power output, solar system output voltage and current when the number of solar panel units connected in series or ...

Solar Panel kW Calculator

Definition: This calculator converts solar panel wattage (W) to kilowatts (kW). Purpose: It helps solar energy professionals and homeowners understand the power output of solar panels in standard kW ...



[How Many kWh Does a Solar Panel Produce?](#)

The kWh a solar panel produces depends on two main factors: its wattage and sunlight intensity. Learn how to calculate a daily energy estimate.



[How Many kWh Does A Solar Panel Produce Per Day? Calculator](#)

To illustrate how many kWh different solar panel sizes produce per day, we have calculated the kWh output for locations that get 4, 5, or 6 peak sun hours. Here are all the results, gathered in a neat chart:



Pv Panel Output Calculator

Quickly estimate your solar panel energy output with our PV Panel Output Calculator. Get daily, monthly, and yearly results in seconds.

[Solar Panel Output Calculator , Get Maximum Power Output](#)

Input your solar panel system's total size and the peak sun hours specific to your location, this calculator simplifies the complex process of estimating the energy your solar panels can ...



How Much Power Does a Solar Panel Produce? By Wattage, KW ...

Understanding how much power does a solar panel produce by wattage, kilowatt hours, size and more, can help you decide on the right size photovoltaic (PV) system for your specific use.

Understanding Photovoltaic Panel



545 Specifications for Optimal Solar

Solar panels work similarly, where specifications determine real-world performance. The 545 model typically delivers 545W power output with 21.3% module efficiency, but let's unpack what these ...

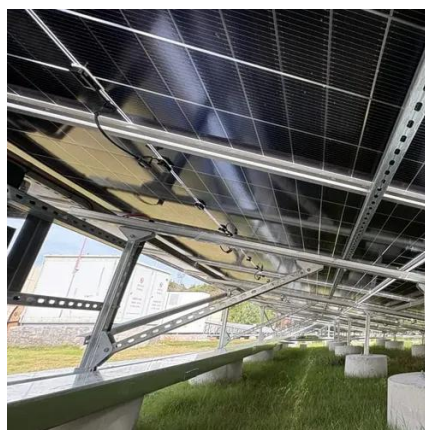


[Bluebird 545 Watt Half Cut Solar Panels](#)

What is 545W Half Cut Solar Panels? A 540W Half-Cut Solar Panel refers to a photovoltaic panel that has a power output of 540 watts and employs a "half-cut" cell design. In a half-cut design, the solar ...

[545 Watt Solar Panels: Complete 2025 Buyer's Guide & Review](#)

Comprehensive guide to 545W solar panels including top models, specifications, installation requirements, and ROI analysis. Compare JA Solar, LONGi & more.





Contact Us

For catalog requests, pricing, or partnerships, please visit:

<https://www.id2market.eu>

Phone: +34 910 56 87 45

Email: info@id2market.eu

Scan the QR code to access our WhatsApp.

