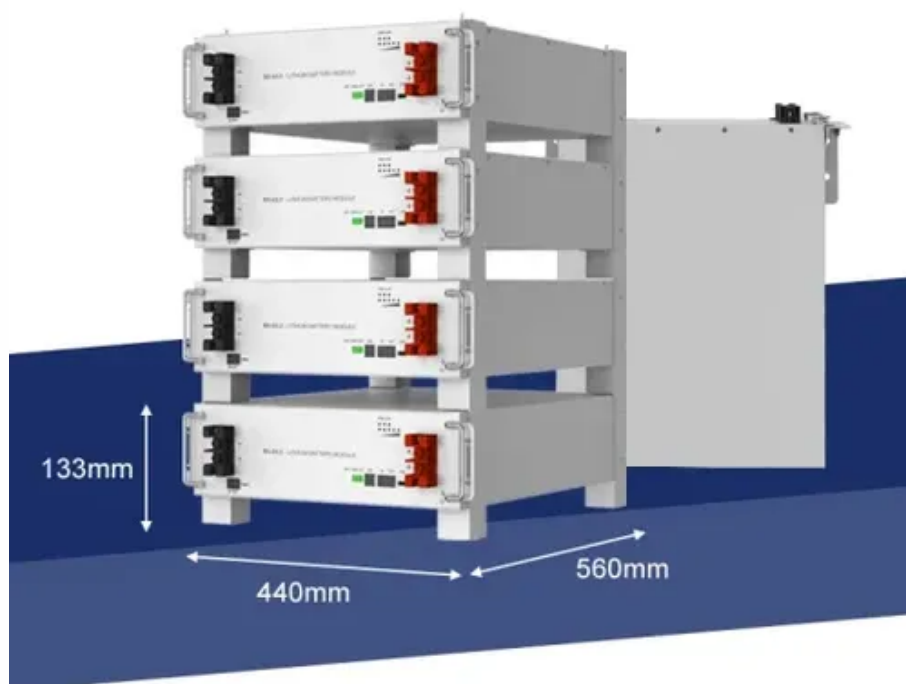




# How many kilowatts of inverters are needed for photovoltaic





## Overview

---

The inverter's capacity should ideally match the DC rating of your solar panels in kilowatts (kW). For example, if you have a 3 kW solar array, you would typically need a 3 kW inverter. Too small = wasted energy

### What Is a Solar Inverter and Why Does Size Matter?

Swap out old appliances for energy-efficient ones to cut down your. In this guide, you'll learn what size solar inverter you need, how to size an inverter for solar systems step by step, how panel output affects inverter capacity and also how many inverters per solar panel make sense for different setups without the headache. High-irradiance regions (like Northern Australia or the Middle East) allow for greater.



## How many kilowatts of inverters are needed for photovoltaic



### What Size Solar Inverter Do You Need for Solar Panels? Explained

Ideally, the inverter's capacity should match the DC rating of your solar array. For example, a 5 kW solar array typically requires a 5 kW inverter. However, factors like derating, future ...

### [Solar Inverter Sizing Guide: How to Size Your Inverter](#)

Your inverter needs to handle that 6kW of DC power, regardless of whether your home uses 2kW or 10kW at any given moment. The grid and your electrical panel manage the distribution ...



### Solar Inverter Sizing Calculator: Important Guide : Electrical

For a 10 kW solar system, an inverter size between 8 kW to 12.5 kW is typically recommended. However, specific requirements may vary based on panel performance, location, and ...

### Solar System Size Calculator: Estimate Panels, Inverter, and Annual ...

Inverters are rated in watts (W) or kilowatts (kW), indicating their capacity to handle power. Our solar inverters are designed to efficiently convert DC to AC, ensuring maximum energy ...



## How to Choose the Right Size Solar Inverter: Step-by-Step with Real

Wondering what size solar inverter do I need for your solar system? This guide walks you through calculating inverter size based on panel capacity, power usage, and safety margins.



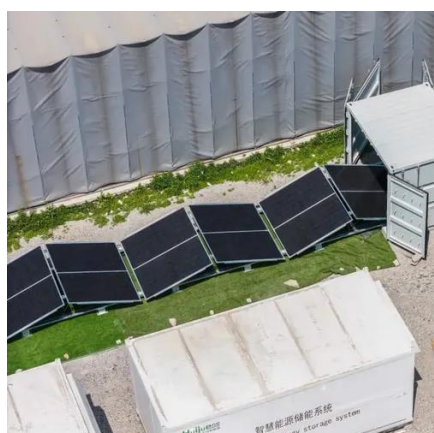
## [Complete Solar Inverter Sizing Guide](#)

Get it right and your system runs smoothly for years. In this guide, you'll learn what size solar inverter you need, how to size an inverter for solar systems step by step, how panel output ...



## [What Size of Solar Inverter Do I Need?](#)

Size of your inverter should closely match the DC rating of your solar panel system. For example, if you're installing a 4-kilowatt (kW) system, the recommended inverter would typically be ...



## [What Size Solar Inverter Do I Need?](#)



## [Experts Break It Down](#)

What Size Solar Inverter Do I Need? A solar inverter should closely match your solar system's output in kW--typically within 80% to 120% of your total panel capacity.



### ESS



## [Solar Inverter Sizing Guide for Maximum Efficiency , Mingch](#)

In most cases, the inverter size should be close to the size of your solar panel system, within a 33% ratio. For example, a 6.6kW solar array often pairs with a 5kW inverter to balance ...

## [Inverter Size Calculator - self2solar](#)

Optimize your solar system by calculating the ideal inverter size. Simply input panel specs for a recommended inverter power range that ensures efficiency and safety today!





## Contact Us

---

For catalog requests, pricing, or partnerships, please visit:

<https://www.id2market.eu>

Phone: +34 910 56 87 45

Email: [info@id2market.eu](mailto:info@id2market.eu)

Scan the QR code to access our WhatsApp.

