



# How many volts does a 9-string lithium iron phosphate battery pack have





## How many volts does a 9-string lithium iron phosphate battery pack h



### A Comprehensive LiFePO4 Voltage Chart Guide for Off-Grid Systems

Every lithium iron phosphate battery has a nominal voltage of 3.2V, with a charging voltage of 3.65V. The discharge cut-down voltage of LiFePO4 cells is 2.0V. Here is a 3.2V battery voltage chart. ...

### The Ultimate Guide to LiFePO4 Lithium Battery Voltage Charts

Renowned for their stability, safety, and extended cycle life, LiFePO4 batteries typically have a nominal cell voltage of 3.2 volts. In comparison, conventional lithium-ion batteries generally have a nominal ...



### [Understanding the LiFePO4 Voltage Chart](#)

The following table shows the typical voltage ranges for a LiFePO4 battery(single lifepo4 cell 3.2V/ 12V /24V /48V) at different states of charge: \*Voltages are measured at rest (no load). As you can see, ...

### [The Comprehensive Guide to LiFePO4 Voltage Chart](#)

Individual LiFePO4 (lithium iron phosphate) cells generally have a nominal voltage of 3.2V. These cells reach full charge at 3.65V and are considered fully discharged at 2.5V. Understanding the



voltage ...



### [LiFePO4 Voltage Charts \(1 Cell, 12V, 24V, 48V\)](#)

This article will show you the LiFePO4 voltage and SOC chart. This is the complete voltage chart for LiFePO4 batteries, from the individual cell to 12V, 24V, and 48V.

WORKING PRINCIPLE



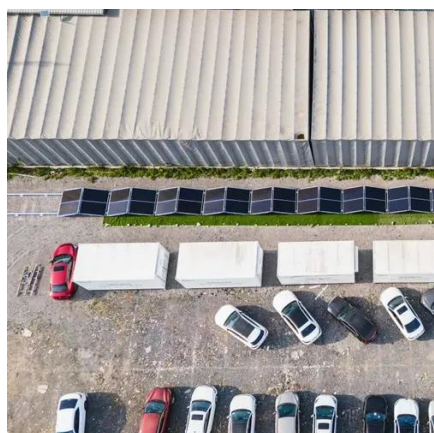
### [LiFePO4 Battery Voltage Chart: Your Ultimate Guide](#)

This voltage chart overviews the voltage ranges corresponding to different charge states in LiFePO4 battery pack configurations. However, referring to the manufacturer's specifications for ...



### **The Definitive Guide to LiFePO4 Lithium Battery Voltage Charts**

LiFePO4 batteries typically have a nominal cell voltage of 3.2 volts. This is in contrast to conventional lithium-ion batteries, which generally have a nominal voltage of 3.6 to 3.7 volts per cell.



### **Guide to LiFePO4 Voltage Chart**



Offering a nominal voltage of 51.2V and a fully charged range of up to 58.4V, these battery banks support higher power loads with minimal energy loss. Their ability to handle deeper discharge ...



### [Ultimate Guide to LiFePO4 Voltage Chart](#)

A 12-volt LiFePO4 battery has a bulk voltage of 14.6 volts. Float voltage: After the battery is fully charged, it is kept at a voltage that is typically lower than bulk voltage.

### [LiFePO4 Battery Voltage Charts \(12V, 24V & 48V\)](#)

Here are lithium iron phosphate (LiFePO4) battery voltage charts showing state of charge based on voltage for 12V, 24V and 48V LiFePO4 batteries -- as well as 3.2V LiFePO4 cells. Note: ...





## Contact Us

---

For catalog requests, pricing, or partnerships, please visit:

<https://www.id2market.eu>

Phone: +34 910 56 87 45

Email: [info@id2market.eu](mailto:info@id2market.eu)

Scan the QR code to access our WhatsApp.

