



# How many watts does a 200w solar panel usually have





## Overview

---

How much power does a 200 watt solar panel produce?

A 200-watt solar panel usually generates 200 watts of power. Its output mainly depends on many different factors such as season, angle, geographic location, cleanliness, and the type of solar panel you use. This 200W solar panel guide cuts through the noise with hard numbers, clear tables, and zero sales fluff. In the next sections, you'll get: Real-world output (not STC fantasy) so you know your daily energy budget. 8 Let's take 5 peak sun hours as an example. In other words, if enough sunlight is provided, a 12V-200W solar panel will produce. Real-world performance varies significantly by location: A 200W solar panel produces 600-1,200 Wh daily depending on climate, with Southwest US locations generating twice the energy of Pacific Northwest installations. Plan your system capacity based on winter performance in your specific region.



## How many watts does a 200w solar panel usually have

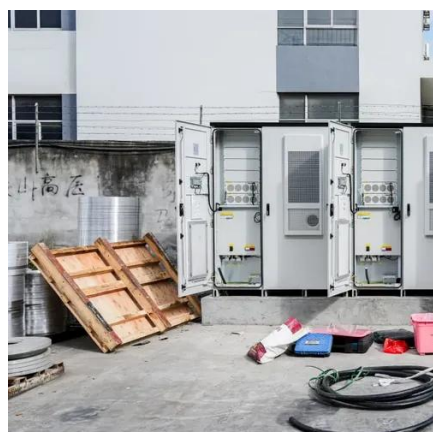


### [How Much Power Does a 200 Watt Solar Panel Produce?](#)

A 200-watt solar panel usually generates 200 watts of power. Its output mainly depends on many different factors such as season, angle, geographic location, cleanliness, and the type of ...

### [How much electricity does a 200w solar panel generate?](#)

A 200W solar panel is capable of producing up to 200W of electricity under optimal conditions, with an average voltage output of 17.5V and an average current output of 11.4A.

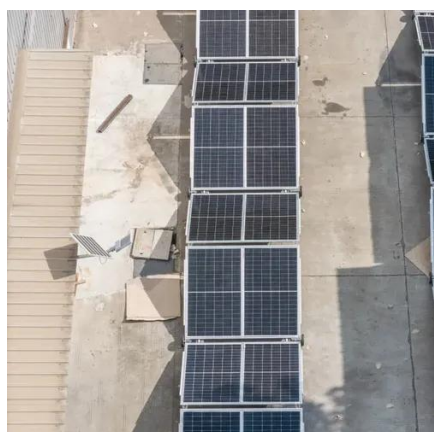


### [How Much Energy Can a 200 Watt PV Panel Produce in a Day?](#)

To calculate how much energy a 200 watt PV panel produces in a day, you'll need to know two things: how many hours of sunlight the panel gets and its wattage. Here's a simple formula: ...

### [What Can A 200 Watt Solar Panel Power? A Complete Guide](#)

Solar panels are rated in perfect conditions, meaning that under optimal solar irradiance (1000 W/m<sup>2</sup>) and perfect temperature (77°F), a 200 Watt solar panel will produce 200 watts.



## 200W Solar Panel Guide (2025): Real Output, What It Runs, Charge ...

In real life, a 200W solar panel produces roughly 0.8-1.2 kWh/day in good-sun regions with sensible tilt and an MPPT controller. In Massachusetts, expect more like ~0.5-0.9 kWh/day depending on ...

### [How Much Power Does a 200 Watt Solar Panel Produce?](#)

But let's be real - those perfect conditions don't last all day. Depending on where you live and the time of year, you can usually count on ...



### [200 Watt Solar Panel: What Will It Run in Your Home?](#)

But let's be real - those perfect conditions don't last all day. Depending on where you live and the time of year, you can usually count on about 4 to 6 hours of good, strong sunlight. So, what ...



### [All You Need to Know About 200w Solar](#)



## Panels

Most 200W panels operate at about 18-20 volts maximum power point voltage, making them compatible with common 12V battery systems when used with proper charge controllers. ...



## How Much Will a 200W Solar Panel Charge?

Under Standard Test Conditions (STC) -- 1,000W/m<sup>2</sup> irradiance, 25°C cell temperature, and AM1.5 spectrum -- a 200W panel is rated to output 200 watts of power. With an assumed 5 Peak ...

## 200W Solar Panel Output: (Amps, Watts, Volts) - Dot Watts®

How much power does a 200W solar panel produce per day? A 200W solar panel produces about 800 watts of power per day, considering 5kW/m<sup>2</sup> of total solar irradiance in a day.



## **200W Solar Panel Complete Guide 2025: Performance & Best Brands**

In real-world conditions, your 200W solar panel will typically produce between 120-180 watts depending on weather, time of day, and installation factors. Based on extensive field testing ...



## Contact Us

---

For catalog requests, pricing, or partnerships, please visit:

<https://www.id2market.eu>

Phone: +34 910 56 87 45

Email: [info@id2market.eu](mailto:info@id2market.eu)

Scan the QR code to access our WhatsApp.

