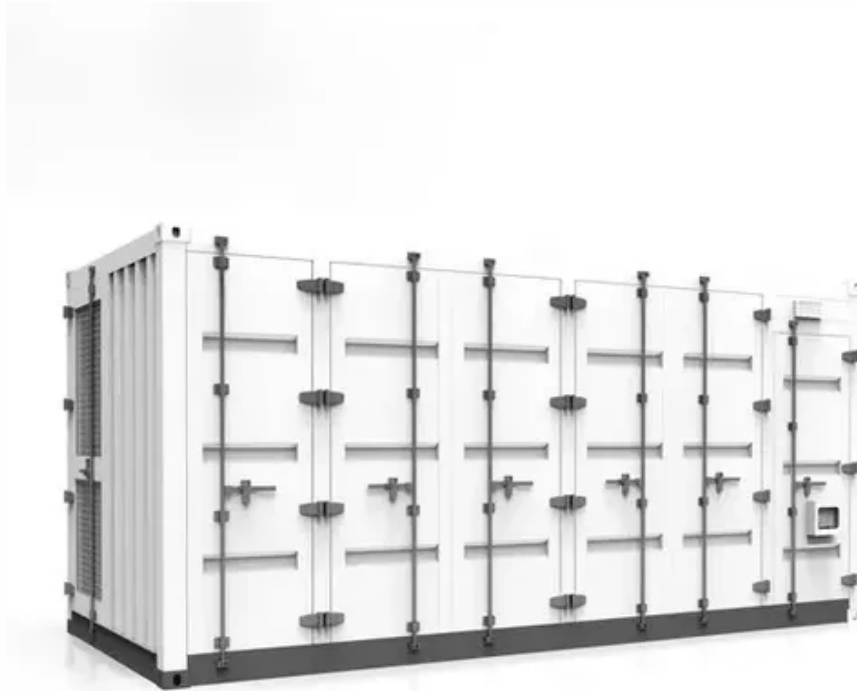




How much power does the factory inverter have





Overview

Short Answer: The size you choose depends on the watts (or amps) of what you want to run (find the power consumption by referring to the specification plate on the appliance or tool). We recommend you buy a larger model than you think you'll need (at least 10% to 20% more than your. First, how much power does a power inverter use?

An inverter needs to supply two needs: Peak or surge power, and the typical or usual power. Surge is the maximum power that the inverter can supply, usually for only a short time (usually no longer than a second unless specified in the inverter's. Consequently, inverter sizes vary greatly. During our research, we discovered that most inverters range in size from 300 watts up to over 3000 watts. See the "Auxiliary Power Ports" section in your OM. For example, some. As a rule of thumb, the minimum required battery capacity for a 12-volt system is around 20 % of the inverter capacity. Some energy gets lost in the process.



How much power does the factory inverter have

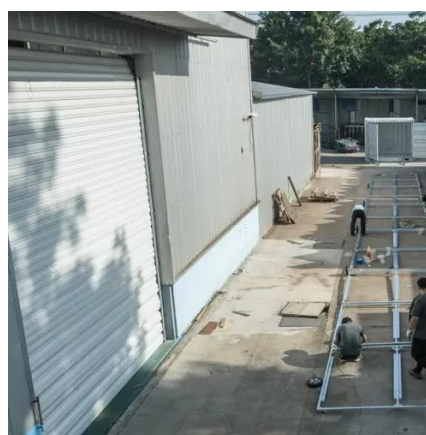


Inverter Efficiency: Understanding How Much Power You're Really ...

In simple terms, inverter efficiency refers to how well an inverter converts DC electricity into usable AC power. No inverter is 100% efficient--some energy always gets lost as heat during ...

Question on 400 Watt Inverter

Ford would have to run a very large gauge wire and the cost of the wire would probably exceed the cost of the inverter just to get 400-500W continuous 120V power source.



What Size Inverter Do I Need?

Learning how to calculate inverter size for your needs can be a tricky task, especially if you're unfamiliar with how an inverter works or how much power you need to produce.

Inverter Capacity Calculator

The inverter's capacity must match or exceed the total power requirements of all connected devices. This scientific principle affects everything from lighting a home to running heavy ...

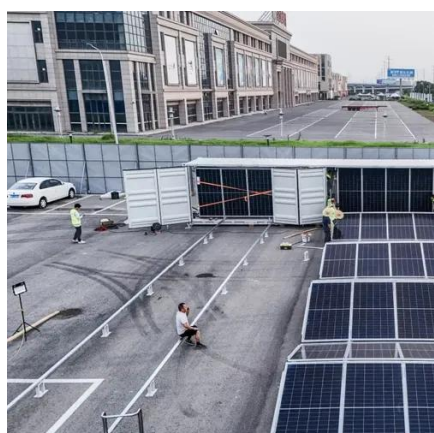


[Frequently Asked Questions about Inverters](#)

There is a simple method to calculate how much power your inverter is using: For 12-volt inverters, divide the connected load by 10; for 24-volt inverters, divide by 20.

[What Size Inverter do I Need? \[with Examples\]](#)

Basically, what you are looking for is 300 watts of continuous power. The Peak (or surge) power of these types of inverters is usually 600 watts and is meant to be available only for few seconds (since a lot ...



[The Only Inverter Size Chart You'll Ever Need](#)

We have created a comprehensive inverter size chart to help you select the correct inverter to power your appliances.

[Inverter Specifications and Data Sheet](#)



The article provides an overview of inverter functions, key specifications, and common features found in inverter systems, along with an example of power calculations and inverter classification by power ...

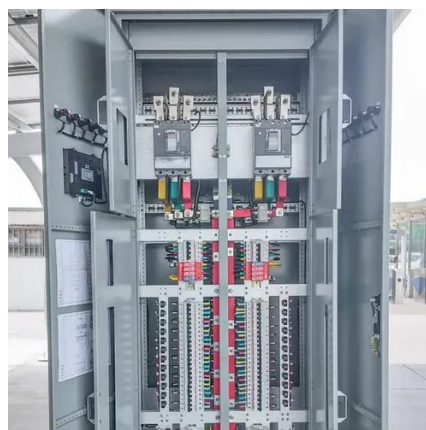


[Frequently Asked Questions About Power Inverters , DonRowe](#)

Short Answer: The size you choose depends on the watts (or amps) of what you want to run (find the power consumption by referring to the specification plate on the appliance or tool). We recommend ...

[The Only Inverter Size Chart You'll Ever Need](#)

Ford would have to run a very large gauge wire and the cost of the wire would probably exceed the cost of the inverter just to get 400-500W continuous 120V power source.



Calculate Inverter Size

If you do not know the efficiency rating of your inverter, a general rule of thumb is that the inverter have a minimum power rating of 125% of the total load. So for the 800 W microwave, the following formula ...



Contact Us

For catalog requests, pricing, or partnerships, please visit:

<https://www.id2market.eu>

Phone: +34 910 56 87 45

Email: info@id2market.eu

Scan the QR code to access our WhatsApp.

