



Lifepo4 battery voltage chart





Overview

This is the complete voltage chart for LiFePO₄ batteries, from the individual cell to 12V, 24V, and 48V. Manufacturers are required to ship the batteries at a 30% state of charge. A battery pack contains several connected cells. 2V, which is its average voltage during use. This differs from traditional. At the heart of understanding and optimizing these powerhouses lies the LiFePO₄ voltage chart – a crucial tool for battery management and performance assessment.



Lifepo4 battery voltage chart



Complete LiFePO4 Voltage Chart & SOC Guide for 12V-48V Systems

By following this Complete LiFePO4 Battery Voltage & SOC Guide, you'll maximize performance, safety, and lifespan of your 12V, 24V, or 48V LiFePO4 Battery setup.

[A Comprehensive LiFePO4 Battery Voltage Chart Guide](#)

Master LiFePO4 battery voltage with our complete guide. Get 12V, 24V, 48V charts, correct charging settings, and tips to maximize lifespan and avoid damage for your off-grid system.



A Comprehensive Guide to LiFePO4 Voltage Chart: 3.2V 12V 24V 48V

A LiFePO4 voltage chart is a visual representation that illustrates the voltage levels of a LiFePO4 battery at various states of charge (SOC). This chart is essential for understanding the battery's ...

[LiFePO4 Battery Voltage Chart: Your Ultimate Guide](#)

The LiFePO4 voltage chart is key to understanding battery performance and safety. This guide covers essential voltage details and a reference chart.

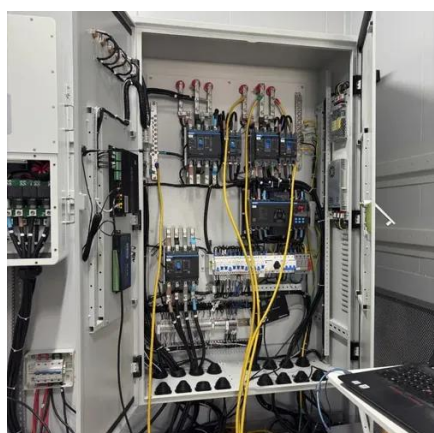


Lithium LiFePO4 Battery Voltage Charts For 12V, 24V, 48V, 3.2V

Since we have LiFePO4 batteries with different voltages (12V, 24V, 48V, 3.2V), we have prepared all 4 battery voltage charts and, in addition, LiFePO4 or lipo discharge curves that illustrates visually the ...

[LiFePO4 Battery Voltage Chart 12V 24V 36V 48V Guide](#)

This LiFePO4 battery voltage chart guide cuts through the guesswork, giving you clear, actionable data on state of charge, safe charging limits, and discharge thresholds.



Guide to LiFePO4 Voltage Chart

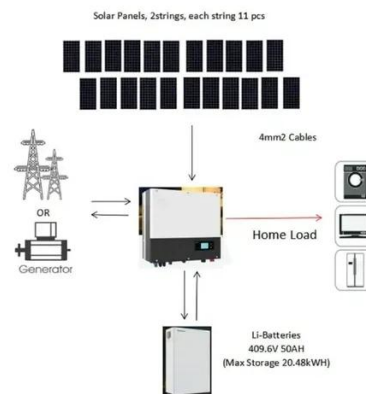
The LiFePO4 Voltage Chart is a crucial tool for understanding the charge levels and health of Lithium Iron Phosphate batteries. This chart illustrates the voltage range from fully charged ...

[LiFePO4 Voltage Charts \(1 Cell, 12V, 24V,](#)



48V)

This article will show you the LiFePO4 voltage and SOC chart. This is the complete voltage chart for LiFePO4 batteries, from the individual cell to 12V, 24V, and 48V.

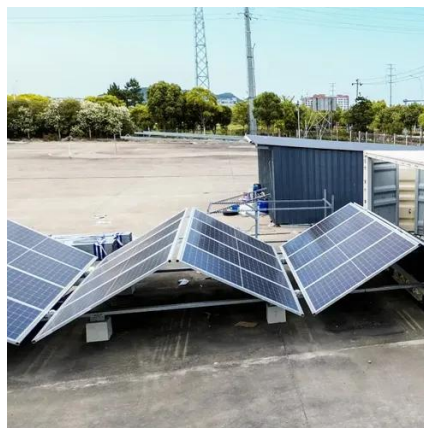


A Comprehensive LiFePO4 Voltage Chart Guide for Off-Grid Systems

This comprehensive guide will demystify the LiFePO4 voltage chart, explaining how to interpret voltage levels, maximize battery life, and optimize your energy storage system's performance.

LiFePO4 Battery Voltage Chart Guide: No More Confusion About ...

This guide breaks down the LiFePO4 battery voltage chart for 3.2V, 12V, 24V, and 48V batteries, and explains what those numbers mean for performance, safety, and longevity.





Contact Us

For catalog requests, pricing, or partnerships, please visit:

<https://www.id2market.eu>

Phone: +34 910 56 87 45

Email: info@id2market.eu

Scan the QR code to access our WhatsApp.

