



Mare Sukhov container substation installation conditions





Overview

This document is for customers who are required to build an indoor MV/LV substation. The substation can be for a large LV (230/400V) connection or a medium voltage (MV, 10kV or 20kV) connection. The requirements detailed in this document form part of ESB's contract with the. Containerized mobile substations are sheltered and address applications in challenging environmental conditions including areas with high pollution, high humidity, extreme temperatures or sand storms. Containers are easy to transport and fast to install, by reducing foundation works as well as. This specification covers the technical construction details of an MV substation. Containerized substation is divided in three section or compartment— MV Breaker, Transformer and Inverters with DCDB.



Mare Sukhov container substation installation conditions



[Compact digital substation container solutions](#)

There are two possibilities for the construction of a substation dedicated to the supply of a new electrical installation: 1 - The utility builds the substation according to its own specifications, ...

Containerized and prefabricated substations , Hitachi Energy

Customers requiring shorter overall delivery times and minimal on-site work have been the main drivers for Hitachi Energy's development of pre-fabricated indoor substations.



[Container Substation Spec Sheet\[1\].pdf](#)

We employ Schweitzer Relays for remote monitoring, enabling real-time detection of the operational status of low voltage cabinets, transformers, and ring network cabinets.

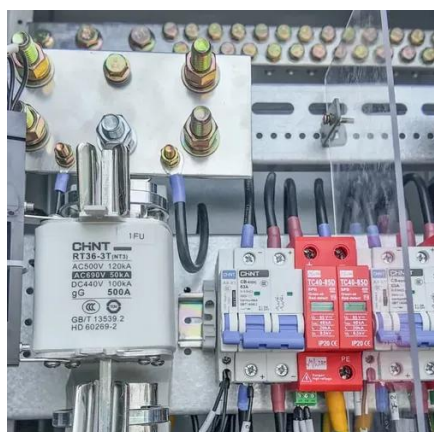
Containerized Substations

Containerized mobile substations are sheltered and address applications in challenging environmental conditions including areas with high pollution, high humidity, extreme temperatures or sand storms.



Container Substation: Safe Reliable Compact , PDF , Electrical

This document summarizes three types of prefabricated substations that can be manufactured to customer specifications: 1) Mobile standard container substations, 2) Fixed type standard container ...



Construction Standards for MV Substation Buildings

Network alterations to accommodate a new substation can take from eight weeks to over six months to complete. The variation in time reflects the voltage level and nature of the alteration required. This ...



Container Substation Specifications , PDF

This document describes the specifications for a 20ft containerized secondary substation unit, including a wooden floor, raised floor cable trench, external access door, louvre vents, extractor fans, electrical ...



Compact digital substation container



solutions

In contrast to conventional substations, the local assembly and construction works for container substations are reduced to a minimum. They are supplied completely prefabricated and only need be ...



9_Containerised Substation

Following are the dimensional and weight details for a typical 11kV, Containerized substation with off circuit type Dry / Oil Cooled Transformer.

Procedure for the establishment of a new substation

There are two possibilities for the construction of a substation dedicated to the supply of a new electrical installation: 1 - The utility builds the substation according to its own specifications, ...



EE037: HV/MV Substation Design, Installation, Commissioning, ...

ment operates and guide you through the control and wiring diagrams that control equipment operation. At this course you will learn about the latest diagnostic testing techniques for assessing the condition ...



Contact Us

For catalog requests, pricing, or partnerships, please visit:

<https://www.id2market.eu>

Phone: +34 910 56 87 45

Email: info@id2market.eu

Scan the QR code to access our WhatsApp.

