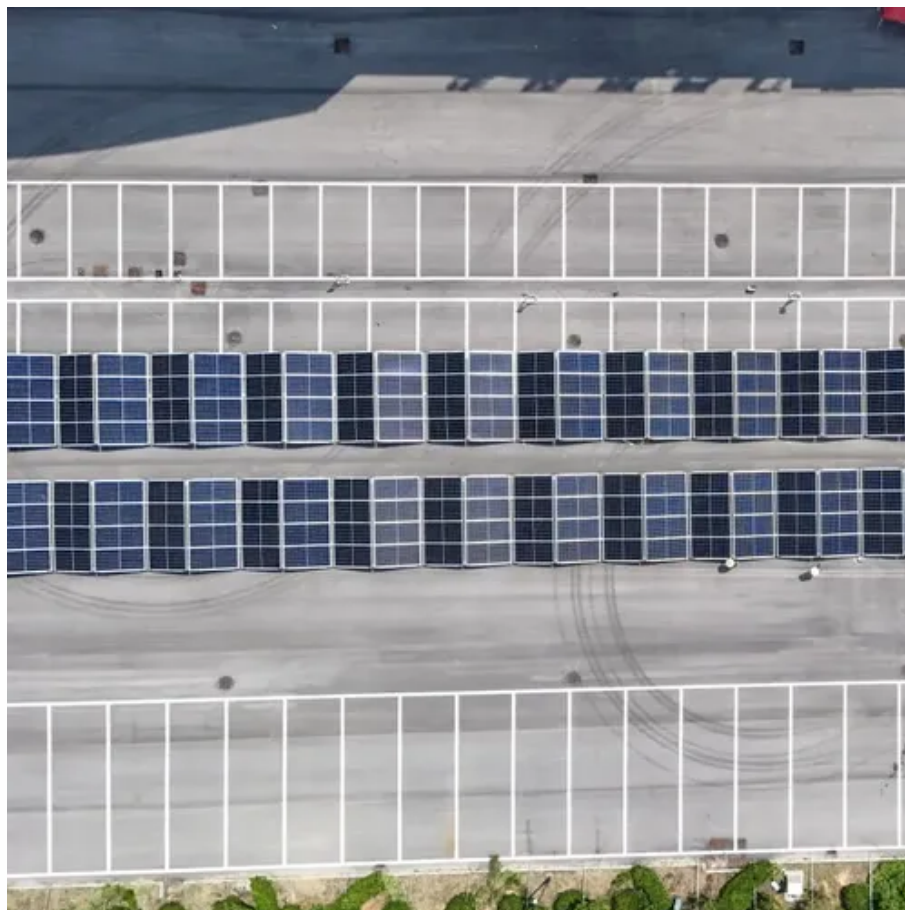




# Peak watt of a photovoltaic panel





## Overview

---

Nominal power (or peak power) is the nameplate capacity of photovoltaic (PV) devices, such as solar cells, modules and systems. It is determined by measuring the electric current and voltage in a circuit, while varying the resistance under precisely defined conditions. Air mass measures the distance that radiation travels as it passes through the atmosphere and varies according to the. A solar panel rating measures the peak output of a solar panel in watts, typically under ideal conditions known as peak sun hours. Solar panel wattage ratings usually indicate the maximum energy produced when exposed to direct sunlight at 1000W/square meters. Here's the tricky part: two systems with the same total kilowatts can generate very different amounts of energy.



## Peak watt of a photovoltaic panel

---



### What is the solar panel peak power? Watt peak definition

A watt-peak (Wp) is the maximum electrical energy that a photovoltaic panel can supply under standard test conditions. The notion of watt-peak is used to compare the performance of PV ...

### Why Do Solar Panels Have A Peak Power Output?

Watt-Peak (Wp) denotes the maximum power output of a solar panel under standard test conditions (STC), which include a solar irradiance of 1000 watts per square meter and a specific cell ...



### **Solar Panels Peak Power**

One critical aspect determining their performance is the peak power, which directly influences the power output. This article will delve deep into solar panels' peak power and efficiency, exploring how it ...

### **Nominal power (photovoltaic)**

Nominal power (or peak power) is the nameplate capacity of photovoltaic (PV) devices, such as solar cells, modules and systems. It is determined by measuring the electric current and voltage in a ...

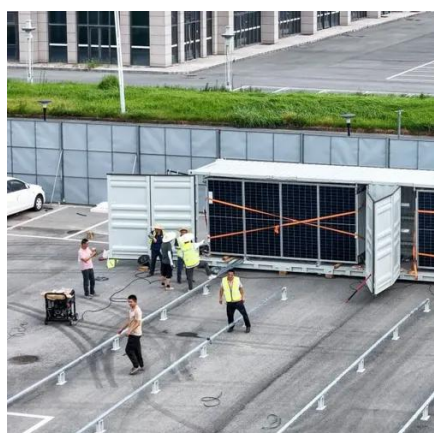


## [Understanding Solar Panel Wattage, Output & Ratings](#)

A solar panel rating measures the peak output of a solar panel in watts, typically under ideal conditions known as peak sun hours. Solar panel wattage ratings usually indicate the maximum ...

### **Watt-Peak**

Watt-Peak, often abbreviated as Wp, represents the potential maximum power that a solar panel can produce under ideal conditions. Imagine a clear, sunny day with sunlight hitting the panel at a perfect ...



### **What is Watt peak?**

When you choose a solar panel with a higher Watt-peak, you often pay more for it. On the other hand, the panel performs better, lasts longer, and has a higher yield. How much Watt-peak ...

## [Solar Panel Wattage & Output Explained](#)



Solar panel wattage is the maximum power a panel can produce under standardized lab conditions. It's measured in watts (W) and reflects the panel's "nameplate" peak output (often listed ...



### [What is WP in Solar Panels: Understanding Watt-Peak](#)

Watt-peak (WP) is a term that describes the maximum power output of a solar panel under ideal conditions. To fully grasp what WP means and how it impacts solar energy systems, it's ...

### **What is Watt Peak in Solar?**

One of these terms is "watt peak" or "Wp," a measurement that often appears when discussing solar panels. But what exactly is watt peak, and why is it important in the context of solar ...





## Contact Us

---

For catalog requests, pricing, or partnerships, please visit:

<https://www.id2market.eu>

Phone: +34 910 56 87 45

Email: [info@id2market.eu](mailto:info@id2market.eu)

Scan the QR code to access our WhatsApp.

