



Photovoltaic bracket layout diagram





Photovoltaic bracket layout diagram



Design of photovoltaic array bracket diagram

Equivalent circuit diagram of PV cell. I : PV cell output current (A) I_{pv} : Function of light level and P-N joint temperature, photoelectric (A) I_0 : Inverted saturation current of diode

Rooftop photovoltaic bracket design drawings

- Architectural drawings detailing proposed array location and square footage - Electrical drawings and riser diagram of RERH PV system components that detail the dedicated location for the



Photovoltaic Power Generation Bracket Installation Structure Diagram

Let's face it - nobody gets excited about photovoltaic bracket structure diagrams until their rooftop solar array starts resembling a modern art installation gone wrong.

Figure 4 photovoltaic panel layout diagram Figure 5 diagram of

Taking into account the necessity to reserve a channel as a PV panel array access channel, so the layout of photovoltaic power generation equipment is shown in Figure 4.



[Photovoltaic rail and bracket installation diagram](#)

unt is to serve as a foundation for a solar panel. Mounting systems allow for solar panel arrays to be positioned in the most effective location to maximize the panel's exposure to sunlight.



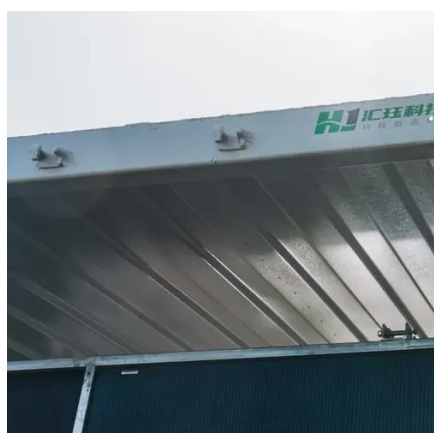
Photovoltaic Bracket Structure Explained: Diagrams & Insider Tips

Our diagrams show how their 20-30° angles maximize energy harvest in specific latitudes. Pro tip: They're cheaper than avocado toast but need seasonal adjustments.



[Photovoltaic bracket installation process structure diagram](#)

In the quest for renewable energy solutions on a global scale today, PV brackets, as the core components of solar power generation systems, play an indispensable



Photovoltaic fixed bracket drawings



In order to achieve the effective use of resources and the maximum conversion rate of photovoltaic energy, this project designs a fixed adjustable photovoltaic bracket



[Photovoltaic bracket selection design drawings](#)

The PV-100 is to include a one-line electrical diagram for the PV system and its interface to the local electrical utility, as well as the Sheet Notes referenced by this Guideline.



Contact Us

For catalog requests, pricing, or partnerships, please visit:

<https://www.id2market.eu>

Phone: +34 910 56 87 45

Email: info@id2market.eu

Scan the QR code to access our WhatsApp.

