



Photovoltaic panel C-shaped steel





Photovoltaic panel C-shaped steel



Features of C-Channel Steel Post Solar Mounting Structures

Compared to traditional H-shaped steel or square tubes, C-Channel Steel Post excel in bending and compression resistance, making them particularly suitable for withstanding the ...

Photovoltaic bracket C-shaped steel specification table

We are a physical factory specializing in the production of photovoltaic brackets, earthquake-resistant brackets, cable brackets, and punched C-shaped steel .



C-Profile Steel Photovoltaic Mounting Structure: An Innovative ...

For ground mounted PV power plants, the simple, easy-to-install C-Profile Steel PV mounting system is an ideal choice. It adapts to diverse terrains and environmental conditions, from ...

What Makes C-Shaped Steel Ground Mounts Ideal for Solar Projects?

Single-axis & dual-axis tracking- Improves solar panel efficiency by following the sun's path.
Retrofitting existing mounts- Allows upgrades without replacing the entire structure.



STEEL PROFILES FOR SOLAR MOUNTING ...

Our products are delivered as drilled, shaped, cut to desired length and galvanized in accordance with the demands of our customers in our fully automatic lines.



CE-Certified Industrial C-Shaped Steel

Through global channels, technological means and intensive operation, it effectively connects various value segments in the fields of new energy, energy conservation and emission reduction, and steel, ...



Is C-Shaped Steel the Most Reliable Option for Your PV Installation?

C-shaped steel, also known as C-channel steel, is a roll-formed structural profile widely used in solar ground mounting systems. It gets its name from its cross-sectional shape, resembling the letter "C".

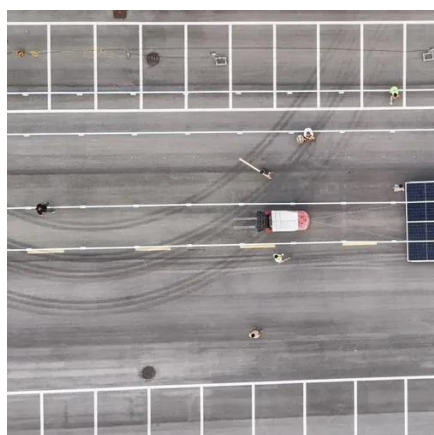


C SHAPED STEEL BEAM AND Z BEAM



STEEL FOR SOLAR ...

Our high quality galvanized c channel steel products are major support for PV solar project. Z BEAM STEEL is a common cold-formed steel with thickness of generally 1.6-3.0mm and cross-section ...



C-shaped steel ground mounting

The C-shaped steel ground mounting system is a robust and versatile solution designed specifically for installing solar photovoltaic panels on the ground. This system plays a crucial role in maximizing ...

Solar Photovoltaic Support C-Shaped Steel Specification Manual: A

As solar installations expand globally, the C-shaped steel used in photovoltaic (PV) support systems has become a critical component. Let's break down why getting these specifications ...





Contact Us

For catalog requests, pricing, or partnerships, please visit:

<https://www.id2market.eu>

Phone: +34 910 56 87 45

Email: info@id2market.eu

Scan the QR code to access our WhatsApp.

