



Photovoltaic panel accessories installed on color steel tiles





Photovoltaic panel accessories installed on color steel tiles



Simple bracket installation of photovoltaic color steel tiles

Cut out lead flashin to fit the profile of the tile bracket. Cover the bracket with the flashing and fix it to the atten with a nail, as shown in Figure 8. Note: It is recommended to use lead flashing for their durab ...

Colored steel tile photovoltaic panel installation bracket ...

Color steel tile is coated with an organic coating such as PVDF material, and thus colored into a color steel plate, or galvanized steel sheet, anti-corrosive steel sheet or other thin steel sheet.



ESS



The Ultimate Guide to Color Steel Tile Roof Photovoltaic Bracket

Photovoltaic brackets serve as the backbone of any solar panel installation, especially on color steel tile roofs. These brackets secure the solar panels to the roofing structure, ensuring they ...

[How to add solar energy to color steel tiles , NenPower](#)

Implementing solar energy into the structure of color steel tiles offers numerous advantages, including reducing energy costs, benefiting the environment with renewable resources, ...



Household Photovoltaic Development--Installation of Household

Detail show: The product can be applied to most types of tile roofs and can withstand strong wind blows and heavy snowfalls. Highly pre-assembled accessories make installation quicker ...



Glazed tile and color steel tile photovoltaic bracket installation

Color steel tile roof: Hook spacing on color steel tile roofs is usually optimized according to the arrangement of the modules and the load-bearing capacity of the racking. The PV modules of ...



Colored steel tiles installed with photovoltaic panels

It is applicable to either frameless or framed solar panels. With the mounting system, the PV module can be placed onto the color steel tile substrate with self-tapping screws and fit the high ...

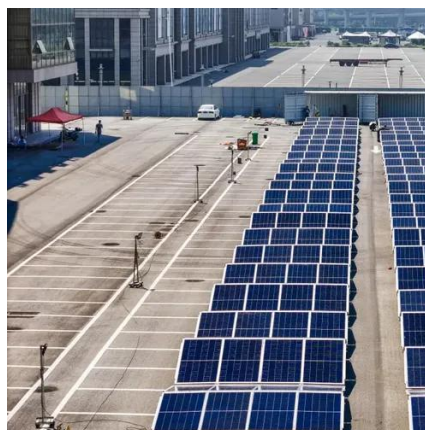


Colored steel tile photovoltaic panel



installation accessories

1. Easy installation, whether it is installed on a bracket or color steel tile or other roof surface;
2. Light weight, will not affect the bearing capacity of color steel tile roof and support too much;



[How to install solar photovoltaic on color steel tiles](#)

The process for installing solar photovoltaic on color steel tiles necessitates careful planning, adherence to local regulations, and precise execution. First, assess the structure's integrity ...

[Colored steel tile photovoltaic panels installed in series](#)

The main structural material of the SOEASY corrugated color steel tile photovoltaic system is aluminum alloy. Through professional design, the support seat is perfectly connected to the & quot;Top ...





Contact Us

For catalog requests, pricing, or partnerships, please visit:

<https://www.id2market.eu>

Phone: +34 910 56 87 45

Email: info@id2market.eu

Scan the QR code to access our WhatsApp.

