



Photovoltaic panel factory date





Overview

Your 25-year warranty period typically begins at the panel's birth date, not installation date. A 2022-made panel installed in 2025 effectively loses 3 years of coverage. Always negotiate this during purchase contracts. Unlike milk cartons that show expiration dates, solar panels carry manufacturing timestamps affecting performance guarantees and degradation rates. Top-tier manufacturers like Trina Solar and Jinko embed production dates through: Wait, no – older panels aren't necessarily bad. Actually. Have you tried out dark mode?

! Scroll to the bottom of any page to find a sun or moon icon to turn dark mode on or off! I talked with SunPower tech support today, and they sent me the attached PDF that allowed me to decode the serial numbers on my used panels. g 190W, 250W, 300W, 330W, 370W, 415W etc?

: r/solar Discussion of solar photovoltaic systems, modules, the solar energy business, solar power production, utility-scale, commercial rooftop, residential, off-grid systems. Solar panels are a cornerstone of modern renewable energy, transforming sunlight into electricity for homes and businesses. photovoltaic (PV) facilities with capacity of 1 megawatt or more.



Photovoltaic panel factory date



[Why no manufacture dates on panels? , DIY Solar Power Forum](#)

Generally look at price per watt, age, and general condition. There are some solar panel testers for about \$100 that are easy to use to test panels to see the production and whether a diode ...



date and place of manufacture, etc.

Hi everyone, I talked with SunPower tech support today, and they sent me the attached PDF that allowed me to decode the serial numbers on my used panels

U.S. Photovoltaic Database

It includes corresponding PV facility information, including panel type, site type, and initial year of operation.



[Solar Photovoltaic Manufacturing Basics](#)

While some concentrating solar-thermal manufacturing exists, most solar manufacturing in the United States is related to photovoltaic (PV) systems. Those systems are comprised of PV ...

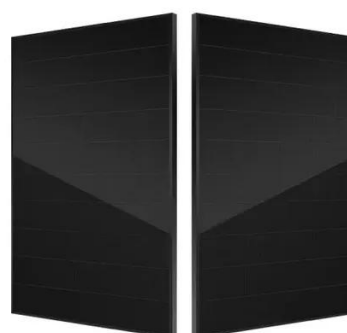


Panel manufacture date

I've been noodling around the Internet for about 10 minutes. Trying to figure out this manufacturing date code. They could have made out easier. ? I'm having a hard time believing these ...

A Brief History of Solar Panels

Charles Fritts installed the first solar panels on New York City rooftop in 1884. Courtesy of John Perlin. Take a light step back to 1883 when New York inventor Charles Fritts created the first



The Life Cycle of a Solar Panel

Discover the complete solar panel life cycle, from manufacturing and installation to degradation, end-of-life management, and recycling. Understand PV lifespan and sustainability.

What is the difference between



factory dates of photovoltaic ...

into the simplest terms, photovoltaic cells are a part of solar panels. Solar panels have a lot of photovoltaic cells lined upon them to convert sunlight into voltage. The solar panels use th

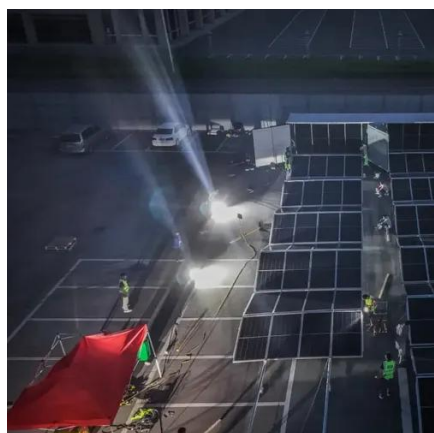


Does anyone know how to tell the age of a solar panel from the ...

Does anyone know how to tell the age of a solar panel from the panel wattage? e.g 190W, 250W, 300W, 330W, 370W, 415W etc? Perhaps years of production, or when they first entered the ...

[How to determine the factory date of photovoltaic panels](#)

Aside from helping you properly install the PV system, it is a great method to detect any solar panel that might have a factory defect or if there is a loose connection.



Do Photovoltaic Panels Have a Production Date? Your Complete

Well, there you have it - solar panels do carry production dates like hidden expiration markers. By combining digital verification and physical inspections, you'll ensure your clean energy ...

PV Module Factory Inspection



During type approval and certification of PV modules to required standards, a factory inspection of all production facilities is required. Whether you are a manufacturer or buyer of PV modules, our factory ...





Contact Us

For catalog requests, pricing, or partnerships, please visit:

<https://www.id2market.eu>

Phone: +34 910 56 87 45

Email: info@id2market.eu

Scan the QR code to access our WhatsApp.

