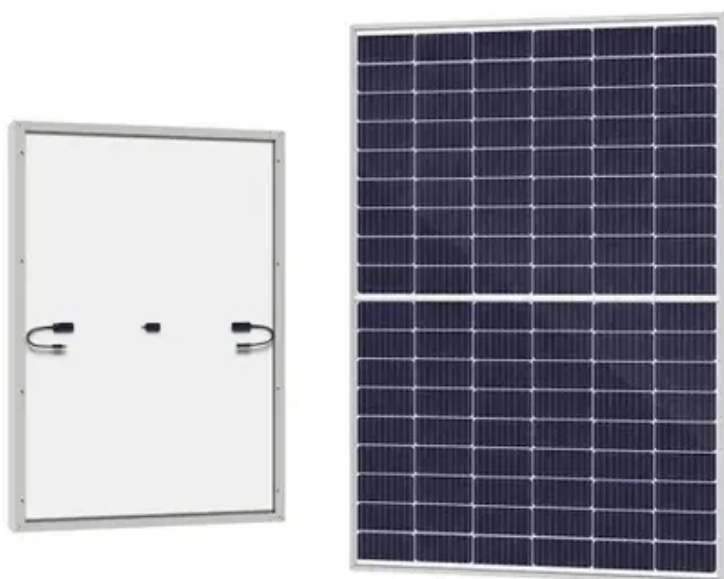




# Photovoltaic panel working environment





## Overview

---

Most solar panel installations are done outdoors, but PV installers sometimes work in attics and crawl spaces to connect panels to the electrical grid. Installers also must travel to jobsites. Using solar energy can have a positive, indirect effect on the environment when solar energy replaces or reduces the use of other energy sources that have larger effects on the environment. Solar energy can be. Solar energy production has gained significant traction as a promising alternative to fossil fuels, yet its widespread adoption raises questions regarding its environmental health and safety (EHS) risks. These regulations may vary depending on the size and type of the installation.



## Photovoltaic panel working environment

---

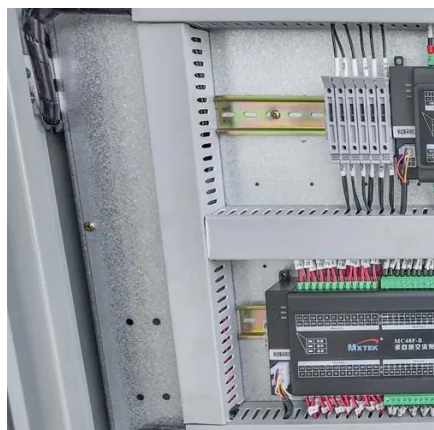


### Assessing the environmental health and safety risks of solar ...

The life cycle assessment highlighted various environmental impacts associated with both photovoltaic (PV) panels and solar thermal systems, including resource consumption, land use change, and ...

### Solar Photovoltaic Installers

Most solar panel installations are done outdoors, but PV installers sometimes work in attics and crawl spaces to connect panels to the electrical grid. Installers also must travel to jobsites.



### [Performance assessment of solar PV panels under varying](#)

Abstract This study provides a novel and comprehensive assessment of solar photovoltaic (PV) panel performance under varying environmental conditions, integrating laboratory experiments ...

### Green Job Hazards

Employers working in the solar energy business need to protect their workers from workplace hazards and workers need to understand how to protect themselves from hazards.



## Solar energy and the environment

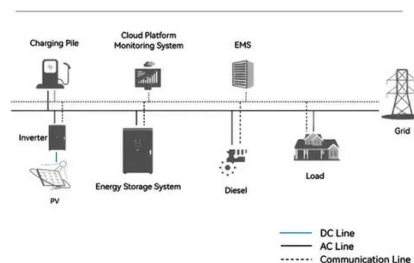
The U.S. Department of Energy is supporting various efforts to address end-of-life issues related to solar energy technologies, including recovering and recycling materials used to manufacture PV cells and ...



## Solar Panel Installers

Communicate mostly via telephone and in-person discussions. Usually work outdoors. Are frequently exposed to high places. Often wear specialized protective or safety gear when working. Are often ...

### System Topology



## [What It's Like to Be a Solar Installer , Faraday](#)

Solar panel installers usually work normal business hours but may have to work off hours and long days when the job calls for it. Working as a solar installer is usually hard and physically demanding. It ...

## Environmental impacts of solar



## photovoltaic systems: A critical review

Photovoltaic (PV) systems are regarded as clean and sustainable sources of energy. Although the operation of PV systems exhibits minimal pollution during their lifetime, the probable ...



## Solar Energy , Department of Energy

There are two main types of solar energy technologies--photovoltaics (PV) and concentrating solar-thermal power (CSP). On this page you'll find resources to learn what solar ...

### [Photovoltaic panel working environment requirements](#)

Solar panel installations have to pass standard building regulations for the property - it's a legal requirement for many home improvements. The key areas are structural safety of a building (Part A) ...





## Contact Us

---

For catalog requests, pricing, or partnerships, please visit:

<https://www.id2market.eu>

Phone: +34 910 56 87 45

Email: [info@id2market.eu](mailto:info@id2market.eu)

Scan the QR code to access our WhatsApp.

