



Rated voltage of photovoltaic panel 260





Rated voltage of photovoltaic panel 260



SolarWorld Sunmodule solar panel 260 watt mono black data sheet

SolarWorld only delivers modules that have greater than or equal to the nameplate rated power. SolarWorld guarantees a maximum performance degradation of 0.7% p.a. in the course of 25 years, a ...

[SolarWorld Sunmodule solar panel 260 watt mono data sheet](#)

SolarWorld Plus-Sorting Plus-Sorting guarantees highest system efficiency. SolarWorld only delivers modules that have greater than or equal to the nameplate rated power.



Solar Panel Output Voltage: How Many Volts Do PV Panel Produce?

To be more accurate, a typical open circuit voltage of a solar cell is 0.58 volts (at 77°F or 25°C). All the PV cells in all solar panels have the same 0.58V voltage. Because we connect them in series, the ...

260 W MONOCRYSTALLINE SOLAR PANEL

Maximum Power: 260W Power Tolerance: 5%
Efficiency: 17.5% Rated Current (Imp): 8.47 Amps
Rated Voltage (Vmp): 30.73 V Open Circuit
Voltage (Voc): 37.91 V Short Circuit Current (Isc):
8.97 V ...



[Linuo Photovoltaic Hi-Tech LN260 \(30\)P-4 260W Solar Panel ...](#)

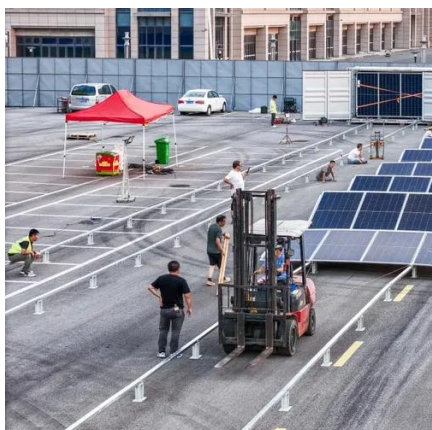
With a maximum system voltage of 1000 V and a temperature coefficient of $-0.423 \text{ \%}/^{\circ}\text{C}$, these solar panels can perform optimally even in challenging weather conditions.



48V 100Ah

Photovoltaic Panel Voltage Standards: A Comprehensive Guide for ...

Summary: This article explains photovoltaic panel voltage standards across residential, commercial, and industrial applications. Learn how voltage variations impact system design, explore real-world case ...



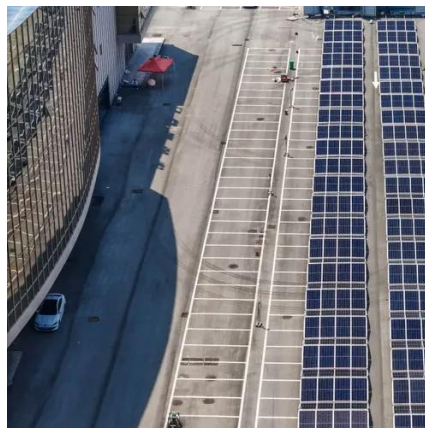
SBM 260W Solar Panel Specifications

Doing Solar Differently.



Solar Panel Ratings Explained - Wattage, Current, Voltage, and

Different electrical ratings (Watt, Amps, and Volts) can necessitate different equipment, and certain panels may be better suited for particular applications and environmental conditions. ...



Solar Panel Output Voltage: 2025 Complete Guide & Specifications

Solar panel output voltage typically ranges from 5-40 volts for individual panels, with system voltages reaching up to 1500V for large-scale installations. The exact voltage depends on panel type, cell ...

260 Watt Solar Panel Guide 2025: Complete Buyer's Guide & Reviews

The 260 watt solar panel rating refers to Standard Test Conditions (STC), measured at 1000W/m² irradiance, 25°C cell temperature, and 1.5 air mass. However, real-world conditions differ ...





Contact Us

For catalog requests, pricing, or partnerships, please visit:

<https://www.id2market.eu>

Phone: +34 910 56 87 45

Email: info@id2market.eu

Scan the QR code to access our WhatsApp.

