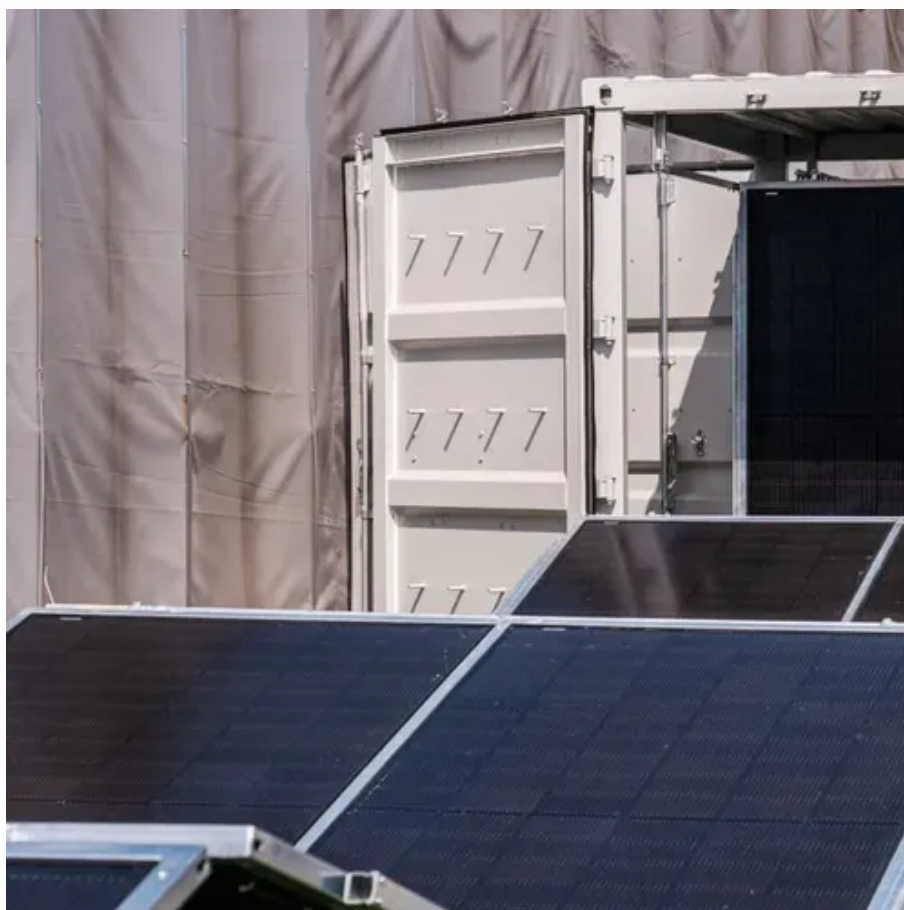




Single-piece area of photovoltaic panels





Single-piece area of photovoltaic panels



Solar Panel Dimensions: Specifications, Power Classes, Roof Area

Analysis of solar panel dimensions and power classes, with reference sizes for 430W/550W/600W modules and corresponding roof area calculations to help select the most ...

[How to calculate the area required for a solar power system](#)

Therefore, the calculated area of a single solar panel is 2.5m^2 . The calculation method of the solar panel installation area of the entire system: the number of solar panels $\times 2.5\text{ m}^2$. The ...



[What is the Area of a 1 kW Solar Panel?](#)

Higher efficiency panels will produce more power in the same amount of space compared to lower efficiency ones. This means that for a 1 kW solar panel, you may need less area if you opt ...

Photovoltaics

Photovoltaics - Calculate Power and Surface Area Calculator for the power per area or area per power of a photovoltaic system and of solar modules. You can enter the size of the modules and click from ...



[How much area does each solar photovoltaic panel have?](#)

To determine the area covered by each solar photovoltaic panel, several factors come into play, including the type of panel, the manufacturer, and its specific capacity. 1. Standard solar ...



[How to calculate the surface area required by solar panels](#)

What factors affect the surface area required for solar panels? The required surface area depends on the number of panels, their wattage, and physical dimensions.



[Solar Panel Size & Dimensions Guide 2025 . Complete Specs](#)

Solar Panel Size Fundamentals When discussing solar panels, the term "size" can be confusing because it refers to electrical capacity rather than physical dimensions. Solar panel size is ...



[Total Area Required for Solar Panel](#)



[Installation ...](#)

Calculate the total area needed for your solar panel installation quickly and accurately with our easy-to-use solar panel area calculator.



Solar Panel Output Per Square Meter

Discover how much electricity solar panels generate per square meter, explore efficiency factors, technology comparisons, and future innovations in photovoltaic energy.

A Guide on Calculating Area Required for Solar Panel Installation

The installation space of a single piece of a panel on the rooftop is nearly 2.1-2.2m² and 2.5m² for solar panels on the ground. To calculate the total area, multiply the total number of solar ...





Contact Us

For catalog requests, pricing, or partnerships, please visit:

<https://www.id2market.eu>

Phone: +34 910 56 87 45

Email: info@id2market.eu

Scan the QR code to access our WhatsApp.

