



Sungrow inverter string voltage





Sungrow inverter string voltage



[String Configuration for Sungrow Hybrid SHxxRT & SHxxT](#)

The string configuration for the Sungrow SHxxRT & SHxxT hybrids is crucial for the optimal operation of your PV power plant. To achieve maximum efficiency, the string voltage should be close to the ...

[SUNGROW SG30KU-M 1000V STRING INVERTER](#)

SUNGROW STRING INVERTER Why Choose SUNGROW SG30KU-M 1000V String Inverter: High Yield Max. efficiency 98.7%, CEC efficiency 98.5% 10% overload capacity, supports bi-facial ...



[Multi Mppt String Inverter , SG350HX](#)

Multi-mppt string inverters from Sungrow, sg350hx, are proven safe for 24h real-time AC and DC insulation monitoring and reach a high yield of 99% at a low cost.

Sungrow SG350HX three-phase string photovoltaic inverter Multi ...

Sungrow SG350HX string inverter for large PV installations 1500 V DC, three-phase, with 12 MPPT trackers (optional 14 or 16), maximum AC output power of 352 kVA at 30°C.



1mwh (500kw/1mw)

AIR COOLING
ENERGY STORAGE CONTAINER

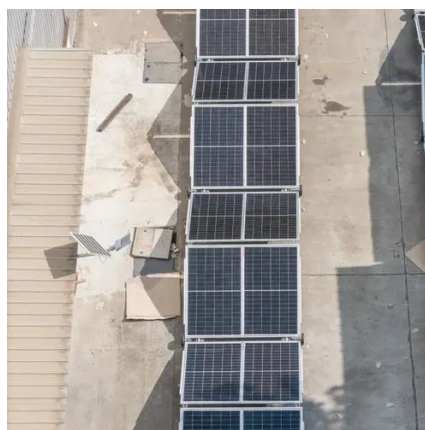


SG200HX-US

Home PRODUCTS PV SYSTEM String Inverter
SG200HX-US Multi-MPPT String Inverter for 1500
Vdc System SG200HX-US Available for NORTH
AMERICA HIGH YIELD Up to 12 MPPTs with max. ...

SG250HX-20

Guess you want to find it.



Products

PV string inverters convert the direct current (DC) generated by solar panel strings into alternating current (AC) that can be fed into the electrical grids, which are commonly used in homes and ...

SG200HX-US



Multi-MPPT String Inverter for 1500Vdc System SG200HX-US North America Utility Scale

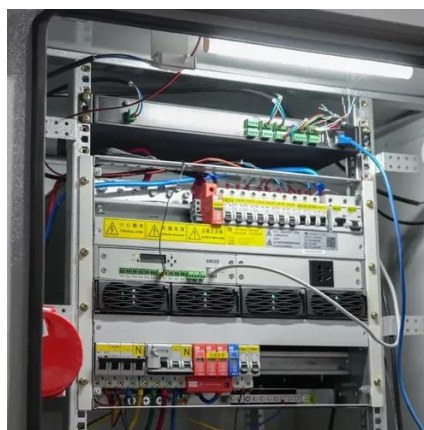


[User Manual SH8.0RS/SH10RS1-phase Hybrid InverterUser ...](#)

The interfaces of the battery in the system must be compatible with the inverter. The entire battery voltage range must be completely within the permissible range of the inverter, and the battery ...

SG150CX

High-precision string detection and I-V diagnosis, accurately locating abnormal strings
SAFE AND DURABLE AFCI 3.0, intelligent DC arc interrupter, with a detection range of 450m Active fault ...





Contact Us

For catalog requests, pricing, or partnerships, please visit:

<https://www.id2market.eu>

Phone: +34 910 56 87 45

Email: info@id2market.eu

Scan the QR code to access our WhatsApp.

