



# Telecommunication company signal base station





## Overview

---

Base station (or base radio station, BS) is - according to the 's (ITU) (RR) - a " in the ." A base station is called in, in (), and in . The term is used in the context of, an.



## Telecommunication company signal base station

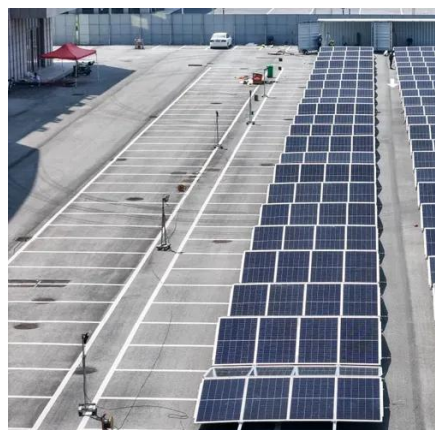


### What are Base Station in Telecommunications?

The Backbone of Wireless Networks A base station connects your phone to the network. It acts as a hub between mobile devices and the core system. Base stations form the backbone of ...

### **The Base Station in Wireless Communications: The Key to Modern**

Equipped with an electromagnetic wave antenna, often placed on a tall mast, the base station enables communication between mobile terminals (such as mobile phones or pagers) and the ...



### **What Is A Base Station?**

A base station is an integral component of wireless communication networks, serving as a central point that manages the transmission and reception of signals between cellular networks ...

### What is Telecommunication Base Station, China Hop

Generally speaking, a base station consists of three antennas, each transmitting signals in a 120 degree direction towards the surrounding area, which together provide seamless coverage of 360 degrees.

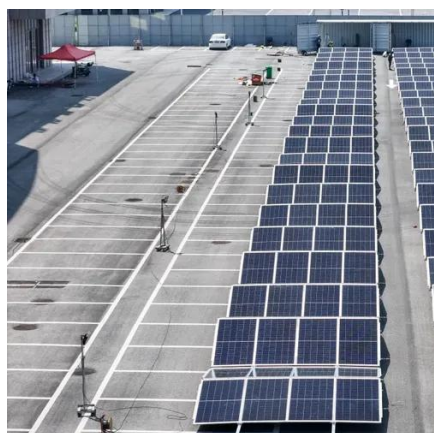


### What Is a Telecom Base Station and How Does It Work?

A base station (BS)--short for Base Transceiver Station--is a core component of a mobile communication network. It serves as the interface between mobile devices and the operator's ...

### What is a Base Station in Telecommunications?

Discover the role and functionality of a base station in telecommunications networks. Learn how these critical components manage communication between mobile devices and the network, ensuring ...



### **Base station**

OverviewLand surveyingComputer networkingWireless communicationsSee also

Base station (or base radio station, BS) is - according to the International Telecommunication Union's (ITU) Radio Regulations (RR) - a "land station in the land mobile service." A base station is called node B in 3G, eNB in LTE (4G), and gNB in 5G. The term is used in the context of mobile telephony, wireless computer networking an...



## What Is a Base Station? Definition and How It Works

Define the central communication hubs of modern wireless technology. Learn how base stations manage capacity and ensure reliable connections.



## Base Stations: The Core and Future of Telecom Networks

At the heart of this connectivity lies a vital piece of telecom infrastructure: the telecom base station. Serving as the backbone of mobile communication networks, base stations are crucial for signal ...

### **Base Stations**

The present-day tele-space is incomplete without the base stations as these constitute an important part of the modern-day scheme of wireless communications. They are referred to as cell ...





## Contact Us

---

For catalog requests, pricing, or partnerships, please visit:

<https://www.id2market.eu>

Phone: +34 910 56 87 45

Email: [info@id2market.eu](mailto:info@id2market.eu)

Scan the QR code to access our WhatsApp.

