



The difference between battery bic and bms

- LiFePO₄ Battery, safety**
- Wide temperature: -20~55°C**
- Modular design, easy to expand**
- The heating function is optional**
- Intelligent BMS**
- Cycle Life: ≥ 6000**
- Warranty: 10 years**





Overview

A lithium ion battery monitor and a battery management system are often confused. One focuses on monitoring, while the other handles control and protection. Understanding the differences between Protection Circuit Modules (PCM) and Battery Management Systems (BMS) can help you optimize the performance and safety of your battery-powered devices.



The difference between battery bic and bms



PCM vs. BMS: What's the Difference and Which One Does Your Battery

Choosing between a Protection Circuit Module (PCM) and a Battery Management System (BMS) can make a huge difference in how safe, efficient, and long-lasting your battery really is. Let's ...

[Battery Monitor vs Battery Management System: Key Insights](#)

Battery monitor vs BMS: learn the key differences, functions, and how they work together to protect and optimize lithium-ion battery systems.



PCM vs. BMS: Understanding the Key Differences and Which One ...

Discover the key differences between Protection Circuit Modules (PCM) and Battery Management Systems (BMS) to determine which is right for your battery-powered devices.

PCM vs BMS in Lithium Batteries Differences and Selection Guide

While many buyers assume PCM and BMS serve the same purpose, they are fundamentally different in architecture, intelligence, protection level, and application suitability. This ...



Key Differences Between PCM and BMS in Lithium Ion Batteries

Understand that PCM provides basic protection for lithium-ion batteries, while BMS offers advanced management and monitoring. Choose PCM for simple devices needing essential safety ...

Battery Smarts: Understanding PCM vs. BMS in Modern Battery ...

In this article, we'll break down the differences between PCM and BMS, their applications, and how PHD Energy can help you choose the best solution for your battery design.



[How to Choose Basic or Smart BMS for Lithium Applications?](#)

Learn the real differences between basic and smart BMS in lithium batteries with features comparison, and how to choose the right BMS for your battery pack.



Voltage range

636V-876V

Rated voltage

768V

Cell type

Lithium iron phosphate

PCM vs. BMS: What's the Difference



and Which One Does Your ...

Learn the difference between PCM and BMS battery systems, and which one fits your device for safety, performance, and smarter power management.

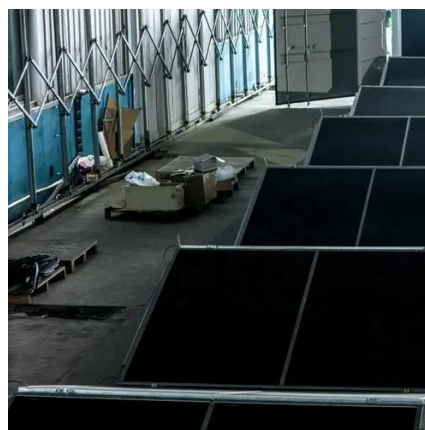


Understanding Battery Management Systems (BMS) in Lithium Batteries

In this lesson, we're breaking down one of the most essential, but often misunderstood, components of any lithium battery setup: the Battery Management System (BMS). What is a BMS? Simply put, ...

The Difference Between PCM and BMS: A Comprehensive Comparison

Discover the key differences between PCM and BMS with this insightful comparison. Just like the difference between wearing a helmet for a bicycle ride (PCM) versus a full suit for a high ...





Contact Us

For catalog requests, pricing, or partnerships, please visit:

<https://www.id2market.eu>

Phone: +34 910 56 87 45

Email: info@id2market.eu

Scan the QR code to access our WhatsApp.

