



# The function of solar weak current combiner box





## Overview

---

Combiner boxes are essential in medium- to large-scale solar installations where multiple strings of modules must be consolidated. Modern solar power stations—from residential rooftops to 1500V industrial arrays—depend heavily on high-quality electrical enclosures, advanced protection components, and intelligent data systems to maintain long-term reliability. This guide explains how combiner boxes work, how they have evolved. A solar combiner box is a crucial component in solar energy systems, designed to consolidate the outputs of multiple solar panel strings into a single output that connects to an inverter. It makes wiring tidy, serviceable, and safer.



## The function of solar weak current combiner box

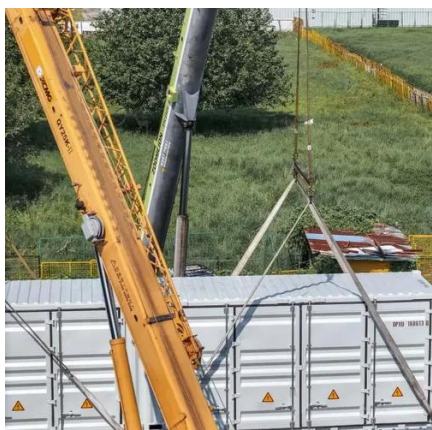


### Understanding PV Combiner Boxes: Design, Function, Protection, and

The combiner box may appear simple, but it plays an essential role in stabilizing, protecting, and optimizing solar power systems. With the rapid growth of renewable energy, the ...

### A Comprehensive Guide to Combiner Boxes in Photovoltaic Systems

Combiner boxes play a key role in ensuring the safety and compliance of solar installations. By consolidating and protecting DC circuits, these boxes help improve the overall reliability of the system.



#### Commercial and Industrial ESS

Air Cooling / Liquid Cooling

- Budget Friendly Solution
- Renewable Energy Integration
- Modular Design for Flexible Expansion



### [How Does a Solar Combiner Box Work - Explained](#)

A solar combiner box gathers multiple solar panel strings into one output, adds protection and monitoring, and feeds the combined DC power to an inverter safely and efficiently.

### What Is a Combiner Box in a Solar Panel System? Complete Guide

Multiple PV strings enter on separate positive and negative inputs. The box merges them to one or two main outputs. This reduces cable runs to the inverter and keeps the roof clean. I also size the ...



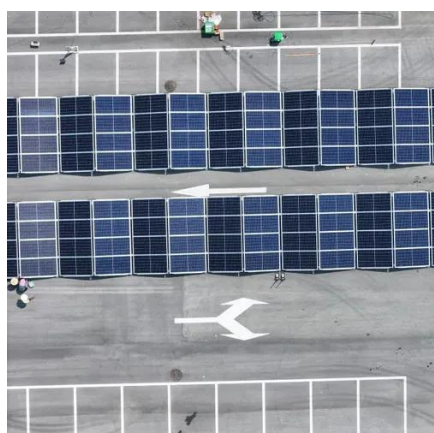
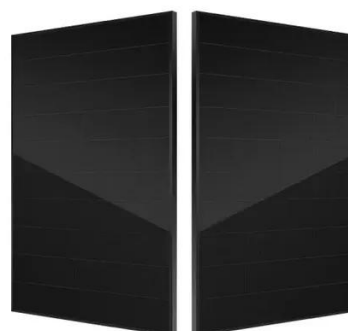
## [What Is a Solar Combiner Box and How Does It Work?](#)

Discover the solar combiner box, the essential component that manages, protects, and consolidates the DC power output of your array.



## The Ultimate Guide to Solar Combiner Boxes: From Basics to ...

A solar combiner box is a crucial component in solar energy systems, designed to consolidate the outputs of multiple solar panel strings into a single output that connects to an inverter.



## [The Ultimate Guide to Residential Solar Combiner Box](#)

Often described as the "central nervous system" of a solar installation, the combiner box consolidates DC output from multiple panel strings while serving as a critical hub for electrical ...

## Understanding the Core Functions of



## Photovoltaic Combiner Boxes in

Solar energy professionals and system designers know that photovoltaic combiner boxes act as the nerve center of any PV installation. This article explains how these devices optimize energy flow, ...



## Solar Combiner Box -- What It Does and Why It Improves Safety

It houses protective devices such as fuses, disconnects, surge protection, and sometimes monitoring sensors to ensure safe and efficient current flow. Combiner boxes are essential in medium- to large ...

## Understanding the Importance and Operations of PV Combiner Boxes ...

Combiner boxes are vital in photovoltaic power generation, gathering and disbursing direct current (DC) generated from multiple photovoltaic panels to enable seamless connections to ...





## Contact Us

---

For catalog requests, pricing, or partnerships, please visit:

<https://www.id2market.eu>

Phone: +34 910 56 87 45

Email: [info@id2market.eu](mailto:info@id2market.eu)

Scan the QR code to access our WhatsApp.

