



The function of the battery adapter of the communication base station





Overview

The UPS battery is designed to bridge the gap during power failures by providing a seamless supply of power. This instant backup is critical in ensuring that the sensitive electronics within telecom base stations continue to operate without interruption. We mainly consider the demand transfer and sleep mechanism of the base station and establish a two-stage stochastic programming model to minimize battery. Among various battery technologies, Lithium Iron Phosphate (LiFePO₄) batteries stand out as the ideal choice for telecom base station backup power due to their high safety, long lifespan, and excellent thermal stability.



The function of the battery adapter of the communication base station



Base Transceiver Station (BTS)

The document details BTS architecture, components, operational functions, types, and installation processes, highlighting its critical role in modern telecommunications.

[UPS Batteries in Telecom Base Stations - leagend](#)

A robust UPS battery system not only guarantees uninterrupted power but also protects sensitive telecom equipment, improves operational flexibility, and contributes to significant long-term ...



Communication Batteries: Why Telecom Base Stations Have Unique ...

In modern telecom networks, ensuring uninterrupted connectivity is critical. The term "communication batteries" is often used ambiguously online, leading to confusion among operators, ...

Telecom Base Station Battery

In the modern world, uninterrupted communication is critical. Our Telecom Base Station Battery Solutions are designed to provide reliable power support for Telecommunications base stations, ...

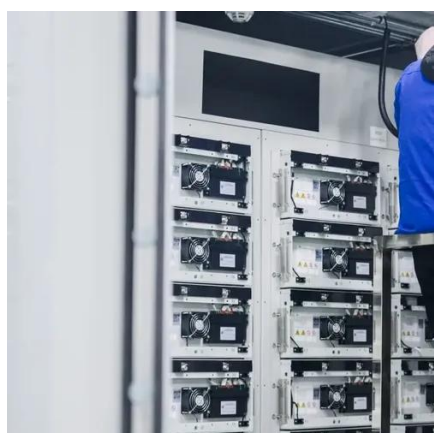


Telecom Base Station Backup Power Solution: Design Guide for 48V ...

Designing a 48V 100Ah LiFePO4 battery pack for telecom base stations requires careful consideration of electrical performance, thermal management, safety protections, and compatibility ...

Communication Base Station Battery in the Real World: 5 Uses ...

Remote areas often lack reliable grid access. Batteries enable telecom providers to establish communication hubs in such locations, powering base stations independently.



Optimization of Communication Base Station Battery Configuration

In the communication power supply field, base station interruptions may occur due to sudden natural disasters or unstable power supplies. This work studies the optimization of battery ...

Telecommunication base station



system working principle and ...

When the battery is fully charged, it will automatically cut off the charging circuit or convert charging to float charging, so that the battery does not overcharge.



What is a Base Station? -- From Communication Core to Thermal ...

Simply put, a base station (BS) is a wireless transceiver device in a mobile communication network that provides wireless coverage and communicates with mobile terminals ...

Base Stations

Backhaul Connection: The backhaul connection links the base station to the core network in the mobile communication system. It provides for the interchange of data between the base station ...





Contact Us

For catalog requests, pricing, or partnerships, please visit:

<https://www.id2market.eu>

Phone: +34 910 56 87 45

Email: info@id2market.eu

Scan the QR code to access our WhatsApp.

