



The maximum output power of solar panels per square meter





Overview

Here's what's shocking: A single square meter of solar panel can generate anywhere from 150 to 250 watts under ideal conditions. But "ideal" rarely exists in real life. Under optimal conditions (5 peak sun hours): At noon under direct sunlight: *Note: 1m². The answer lies in something most solar salespeople never properly explain— solar irradiance and your actual energy potential per square meter. Standard solar panels typically yield between 150 to 200 WP per square meter, meaning a standard panel with a size of about 1. This measurement is a key factor in determining the efficiency and potential of solar panels.



The maximum output power of solar panels per square meter



[How many WP per square meter of solar panels , NenPower](#)

Standard solar panels typically yield between 150 to 200 WP per square meter, meaning a standard panel with a size of about 1.7 square meters will generate around 250 to 340 WP.

Solar Panel Output Per Square Meter

Discover how much electricity solar panels generate per square meter, explore efficiency factors, technology comparisons, and future innovations in photovoltaic energy.



[How Much Energy Does a Solar Panel Produce: Output Explained](#)

The short answer: most modern solar panels produce between 1.2 and 2.5 kilowatt-hours (kWh) of energy per day per panel under real-world conditions. That typically works out to about ...

[Solar Energy Per Square Meter: How Much Power Can You Get?](#)

This article explores solar energy per square meter and the various factors that influence energy output, such as location, climate, and panel efficiency. It provides crucial calculations, ...



Solar Panel Power Output Calculator

Definition: This calculator estimates the electrical power output of solar panels based on their physical area, efficiency, and solar irradiance.

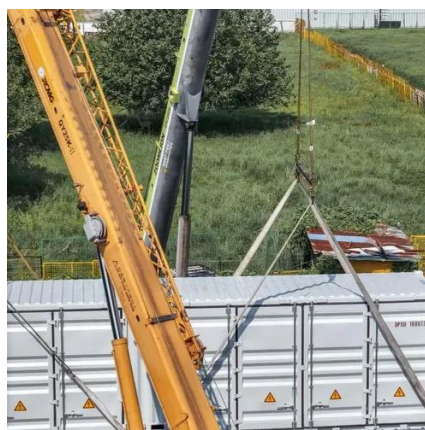
Purpose: It helps solar energy professionals and homeowners ...

Our Lifepo4 batteries can be connected in parallel and in series for larger capacity and voltage.



[Solar Power per Square Meter Calculator](#)

A solar power per square meter calculator takes details regarding these factors and then gives the accurate output generated by the solar panel per square meter.



[Solar Energy Generation Per Square Metre: A Complete Guide](#)

On a clear day, each square metre of the Earth's surface receives approximately 1,000 watts of solar energy, also known as 1 kW/m². This energy can be converted into electricity using ...

[Solar Panel Energy: Get Max Power From](#)



[Your Panels](#)

Solar panel efficiency describes how well a panel converts sunlight into usable electricity. It is expressed as a percentage. For example, if a panel has 20% efficiency, it means 20% of the ...



[Solar Power Per Square Meter Calculator](#)

Calculate solar panel energy output per square meter. Get accurate daily, monthly, and annual production estimates based on location, panel specs, and system losses.

[Solar Panel Watts Per Square Meter Explained](#)

Learn how to measure solar panel efficiency using solar panel watts per square meter with this comprehensive guide.





Contact Us

For catalog requests, pricing, or partnerships, please visit:

<https://www.id2market.eu>

Phone: +34 910 56 87 45

Email: info@id2market.eu

Scan the QR code to access our WhatsApp.

