



The photovoltaic panel installed me at 40 degrees





Overview

For example, solar panels installed at a 40 degree tilt may produce 10-25% more electricity annually compared to horizontal panels in many locations. Properly angling the panels allows capturing more total solar radiation during peak sun hours when production is highest. Being 5-10 degrees "flatter" than perfect is often better for self-cleaning (rain washing) than being too steep. Don't worry if your roof isn't perfect. The Science of Solar Tilt (Latitude Rule) Solar panels act like a net catching photons. To catch the most, the net. Our solar panel angle calculator takes the guesswork out of panel positioning, suggesting panel tilt angles based on your location's latitude and your willingness to reposition based on the sun's seasonal dance across the sky. Factors like geographic location, season, tracking capability, and obstructions impact the ideal tilt and orientation.



The photovoltaic panel installed me at 40 degrees



[Solar Panel Tilt Angle Calculation: Complete Guide 2025](#)

Contrary to popular belief, higher temperatures don't improve solar panel performance. High temperatures cause voltage drops and reduced total power output, as solar cells have negative ...

[Solar Panel Angle: Definition, and How to Calculate](#)

The solar panel angle is the tilt at which a solar panel is installed, calculated relative to the horizontal plane of the equator. The solar panel angle needs to be perpendicular to the sun to ...



[Calculate Your Optimal Solar Panel Tilt Angle](#)

Boost your solar panel's efficacy with our comprehensive guide. Calculate the optimal tilt angle based on empirical data, dispel common myths, and understand how location impacts solar energy output.

Solar Panel Tilt Angle Calculator

Discover the best angle for your solar panels with our Solar Panel Tilt Angle Calculator. Maximize energy efficiency and save money!



Solar Panel Angle Calculator

Our solar panel angle calculator takes the guesswork out of panel positioning, suggesting panel tilt angles based on your location's latitude and your willingness to reposition based on the sun's ...



What is the Best Angle for Solar Panels? Maximizing the Efficiency

For example, solar panels installed at a 40 degree tilt may produce 10-25% more electricity annually compared to horizontal panels in many locations. Properly angling the panels allows capturing more ...



Solar Panel Angle & Tilt Calculator (2026 Guide) , Roof Pitch Chart

For a fixed system (95% of residential installs), the Golden Rule is to tilt your panels at an angle equal to your Latitude. This averages out the sun's position over 365 days.

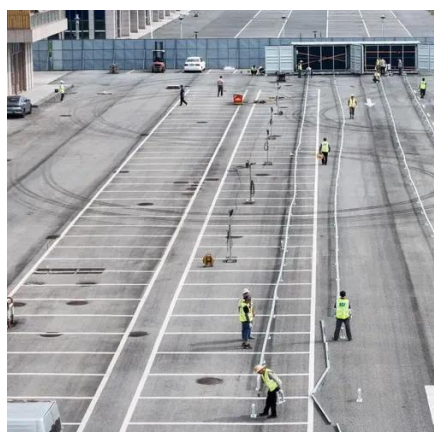


[How many degrees to install solar panels .](#)



NenPower

Absolutely, solar panel angles can be adjusted, particularly in systems installed on flat rooftops or using adjustable mounting systems. For varying seasons, owners often utilize tilt mounts ...



Understanding Roof Pitch and Solar Panel Angles for Better Energy ...

Research shows that angles between 30 and 40 degrees provide the best results for solar panel performance. This design helps panels capture sunlight effectively throughout the year, ...



Contact Us

For catalog requests, pricing, or partnerships, please visit:

<https://www.id2market.eu>

Phone: +34 910 56 87 45

Email: info@id2market.eu

Scan the QR code to access our WhatsApp.

