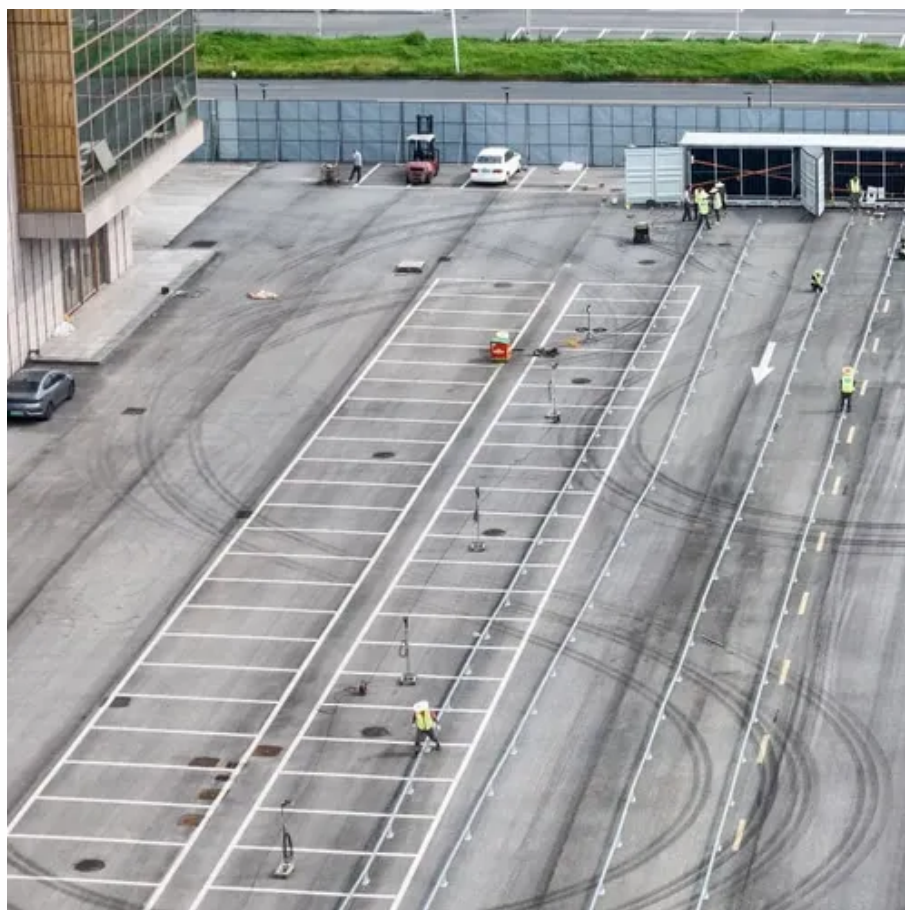




The photovoltaic panel is half covered





Overview

You might think covering half your solar panels would cut power output by 50%, right?

Surprisingly, quality photovoltaic systems can still generate 60-75% of their rated capacity when properly configured. Let's break down the science behind this resilience. The advantages of half-cut solar cells are great and there are no remarkable disadvantages to this technology when compared to traditional modules. Market Momentum Accelerating: Half cut technology. Say I have a panel with an open-circuit voltage of 46. It might be close to zero volts or. The study came to the surprising conclusion: air pollutants deposited on solar panels can decrease the amount of produced energy by more than 25 percent simply by obstructing the direct sunlight.



The photovoltaic panel is half covered

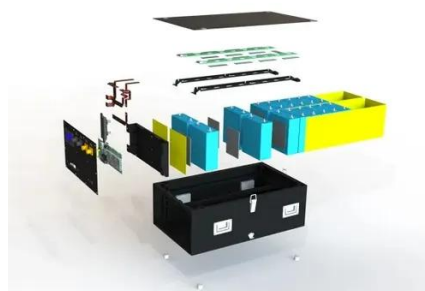


Do solar panels work in the shade? A complete guide to solar panel

As you can see in the image above, when 50% of the cell is blocked from sunlight, its current is cut in half. Its voltage on the other hand stays the same. When it's completely blocked from ...

Can Solar Panels Work When Half-Covered? Understanding Partial ...

Summary: Discover how modern photovoltaic systems maintain power generation even when partially shaded. Learn about bypass diodes, panel configurations, and real-world applications for homes and ...



[Half Cut Solar Panels: Complete Guide to Technology, ...](#)

Discover how half cut solar panel technology improves efficiency by 75% and reduces shade impact. Compare top manufacturers, costs, and real performance data.



[Voltage from a panel partial in the shade](#)

How will the voltage change if half of the panel area is in the shade? Can anyone explain? I illustrate the question in the image below. It depends a lot on how the panel is wired. It ...



[What Is Half-Cut Solar Cell Technology?](#)

Half-cut solar cells are rectangular silicon solar cells with about half the area of a traditional square solar cell, which are wired together to make a solar module (aka panel).

How Partial Shading + Shadows on Solar Panels Affect Power , GridFree

Every single cell in a solar panel is wired in a series to create one large flow of current. If one cell is covered by a shadow or object, the current of that cell drops significantly, and the panel ...



[Half-Cut Solar Panels: Pros & Cons , Worth Your Investment?](#)

How do half-cut solar panels compare to traditional panels? What are their pros & cons? Find your answers explained in detail.

How well do half-cut solar panels



perform under partial shading

Shade blocks sunlight and reduces current in solar panels. In series setups, one shaded cell drags down the whole string. Full-cell panels suffer more. Half-cut panels split circuits, so only ...



Do Solar Panels Work When Partially Shaded?

Shaded cells of a solar panel interrupt the energy flow in the grid, which forces other cells work harder to compensate for the loss. It happens because electrons in shaded solar cells are not ...

Will Solar Panels Work in the Shade? Everything You Need to Know

Did you know modern photovoltaic systems can still generate energy even when partially covered? Many homeowners assume shaded areas automatically rule out renewable solutions, but ...





Contact Us

For catalog requests, pricing, or partnerships, please visit:

<https://www.id2market.eu>

Phone: +34 910 56 87 45

Email: info@id2market.eu

Scan the QR code to access our WhatsApp.

